



Delta Kappa Gamma Society International

Pennsylvania State | Alpha Beta Chapter

Alpha Beta Bits

The Delta Kappa Gamma Society International promotes professional and personal growth of women educators and excellence in education.

Memorable DKG Dates

May 11, 1929

DKG Founded

January 23, 1937

PA State Organization Established

May 22, 1948

Alpha Beta Chapter Chartered



NEXT NEWSLETTER SUBMISSION DEADLINE

May 25, 2024

Email: Amy Snyder

Newsletter Staff:

Amy Snyder, Editor

Royce Boyd

Judy Conrad

Joan McGreevey

Tina Smith-Gilbert

President's Message

Let's talk about synergy for a moment. Synergy is a state of cooperative interaction and occurs when the interaction and outcome of chapter members is greater than the sum of their individual efforts.

Synergistic efforts leverage each person's strengths,
unique perspectives, life experiences, talents,
and styles to produce
more remarkable results
than what could be achieved alone.

Synergy is a great word to describe how our chapter operates and it most definitely describes what we saw in action on March 23 at our Craft Show. Every member who participated in some way – baked, made soup, cooked (sloppy joes or hot dogs), worked the bake sale, cashiered, sold raffle tickets, networked with their friends in the print and radio media, donated funds, or came to the event and purchased something – shared a talent that led to an extremely successful event, one that is an excellent example of building community.

We entered the realm of community crafters and created visibility within a whole new network of people. (And the vendor evaluations of our event were extremely positive which has led to a new group of chapter friends.) We increased our visibility in all the communities we serve prior to the event with all the wonderful PR we had (especially with all the school districts who were asked to spread the news to help raise funds for the Teacher Enrichment Grants) and during the event through our interactions with everyone who walked



The March 23 DKG Craft/Bake Sale was a success!

Below: Joan McGreevey checks out customers at the bake sale table.

President's Message continued—

through the doors. We strengthened the bonds of camaraderie within the chapter especially with our collaborative efforts and the sharing of stories.

Synergistic efforts make a chapter:

- Stronger
- More effective
- Happier and healthier
- More cooperative and collaborative
- Explore alternatives and consider possibilities
- Value teamwork
- Share the workload
- Strengthen member interactions

Synergy is certainly a key to our success. Educator and author Stephen Covey said, "Synergy is better than my way or your way. It's our way." Yes, indeed. Our way is our key to our success.

It takes all of us to continue our way. If you've not already paid your 2024-2025 dues, I hope you do so soon. Our synergy has created many magical moments for us (the latest being our awesome Craft Show) and we all need to do our part (as we did for the Craft Show) to keep the energy and the magic flowing.

Grateful for all of you and each magical moment you create.

~Becky



US Forum
Pat Brenner

The US Forum is dedicated to being an advocate for women, children, and education by implementing actions which enable change and improvement in social institutions, systems, legislation, and practices that impose hardships or impact negatively on individuals, groups, or families.

The National Women's History Museum is also aware of hardships imposed on individuals. It recently reported some interesting Gender Pay Gap Facts. When comparing women and men with the same job title, seniority level, and hours worked, a gender gap of 11% still exists in terms of take-home pay. Only 8.8% of Fortune 500 CEOs are women.

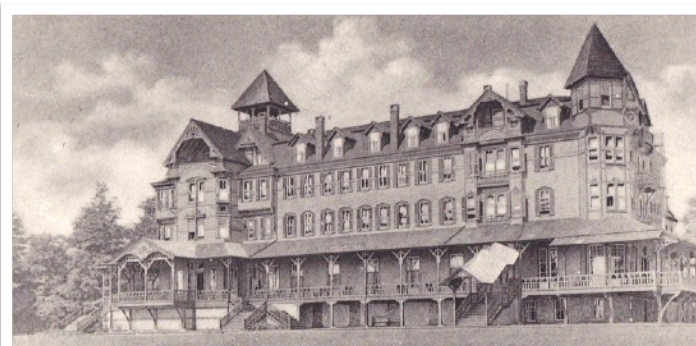


*Pat Harrison
Historical Records Chair*

Spring of 1949 continued

The whirlwind of meetings and events in the spring of 1949 continued April 7 with the sixth regular meeting of Alpha Beta Chapter. The very first initiation ceremony was conducted following a delicious dinner. The table decorations were the traditional colors of red and gold, including beautiful red roses and red candles. The ceremony was “very beautiful and impressive” with 13 members taking an active part in the ceremony. That evening the first honorary member, Mrs. Lizzie Bain Lysinger; the first associate member, Mrs. Edna Ross Simon; and three active members, Mrs. Kathleen Parks, Miss Thelma Morse, and Miss Mary Morse became members of the chapter. Chapter membership now totaled 21.

On April 23 fifteen Alpha Beta members joined members of Alpha Delta (Somerset), Iota (Altoona), and Epsilon (Indiana) at the Ebensburg Inn for a special joint meeting. They had a luncheon followed by remarks from the chapter presidents. The guest speaker was Miss Blanch Foster, the former State President. She spoke with “wit and humor” to convey the true meaning of friendship. Grace Rankin, Recording Secretary, noted these worthwhile thoughts from her address:



Ebensburg Inn, Ebensburg, PA

*To have a friend we must be a true friend.
Give of yourself, if you wish happiness.
Friendship will reduce to a minimum our
numerous misunderstandings.
It (friendship) is a quality that makes you
sought after.*

Delta Kappa Gamma friendships.

Genuine spiritual fellowship.

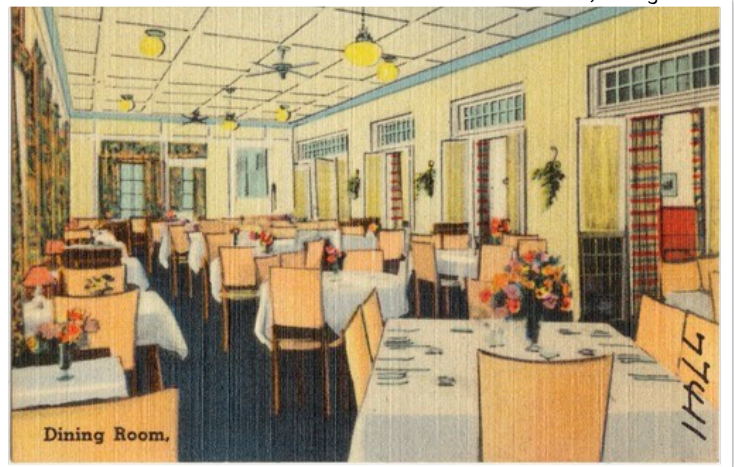
*You can make more friends in two months by
becoming interested in other people than you
can in two years by trying to get other people
interested in you.*

Before the meeting ended, they exchanged names so that each had a pen pal from another chapter.

The seventh meeting was a dinner meeting held on May 6 at the Fort Bedford Inn, which seemed to have become the regular meeting place for the chapter. Alpha Beta members hosted Miss Mabel Studebaker, President of P.S.E.A as well as members of the Bedford County Branch of P.S.E.A.

Our Founders were building a solid foundation for the Chapter. Their dedication to the workings of the Society and the friendships that they cultivated helped to create the culture of the Chapter that remains even to this day. We may do things differently 75 years later, but we continue to value the principles of the Society and the friendships that we have made along the way.

Fort Bedford Inn, Dining Room



Photos courtesy of the Jackson Township Historical Preservation Facebook Page.



DUES NOTICE

Pat Harris, Treasurer

Dues are due, and they are the same as last year.

Active members - \$89.00

Reserve members - \$34.00

Please write a check payable to "Delta Kappa Gamma" for the appropriate amount and send the check to Pat Harrison. Her address is in the Chapter Directory.



STATE CONVENTION

Our state convention in Cranberry, PA is only 11 weeks away. If you are planning on attending and didn't sign the survey that was distributed at the March meeting, contact Becky so she can add you to the convention team. Convention will be held Jun 19-21 (Wednesday through Friday) at the Pittsburgh Marriott North in Cranberry.

SPRING 2024

WEEKEND BACKPACK FOOD DRIVE

Kudos everyone (and special kudos to Dr. Kris Arnold and his staff at Live Well Chiropractic)! We had another outstanding response from our members and from the community to the spring food drive. Each site receiving our donations each got a trunk load (or more) of items. The notes of gratitude that we receive from the schools all mention the "generous donations" and how our support "ensures that no child in the community/district goes hungry on the weekend."

INTERNATIONAL CONVENTION

Registration is open for the 2024 International Convention in National Harbor, MD, July 9-13. Both the hotel and the convention registration links are open on dkg.org. This year, the registration fee covers everything including meals, events with speakers (one of whom is the author of *Hidden Figures*), sessions and breakouts. The DKGIEF fundraising event for the Foundation, an evening at Bobby McKey's Dueling Piano Bar, is an extra cost. Voting on proposed amendments will take place at this convention.

Town Halls are being held with a focus on the proposed amendments to the *Constitution and Standing Rules*. Each proposed amendment and its impact on the Society will be described with questions and comments about each one being addressed. The March *DKG News* contains all the proposed amendments. Dates for the upcoming Town Halls are:

April 2 @ 12:30 PM Central; 1:30 Eastern (focus will be Proposed Amendments for Articles VI-VIII, #75-82 that will be voted on at the Int'l Convention)

April 17 @ 10:00 AM; 11:00 Eastern (focus will be Proposed Amendments for Articles IX-XX, #83-94 that will be voted on at the Int'l Convention)



APRIL

Karen Musselman, 1
Pat Brenner, 4
Ann Snyder, 11

Beverly Brumbaugh, 18
Patricia Harrison, 18
Kaitlyn Allison, 22

MAY

Carol Deremer, 8

VOTING ON NEW MEMBERS

Lately, the International Membership and Expansion Committee has been fielding a lot of questions about voting on new members. International Parliamentarian Dr. Helen Popovich shares the following:

"The Constitution has two applicable provisions relating to membership. Article III, C.1, says: "A candidate for active or collegiate membership shall be selected by the method established by the chapter's rules." Article III.A.1 says: "Membership in The Delta Kappa Gamma Society International shall be by invitation."

Because the rule in Article III.a.1 states a more specific requirement than the rule in Article III.C.1, it has more authority than the rule in Article III.C.1. Therefore, a prospective member must be invited to join. Even though the governing documents do not specify how or by whom that invitation must be given, many chapters assume that the invitation must be a chapter vote.

However, this assumption is incorrect. There is no rule that requires the invitation to be by vote, and Article III.C.1 gives the chapter full authority to decide how and by whom that invitation is offered. For example, a chapter has the authority to say that an eligible person shall be admitted to membership if she is invited by a chapter member or that an eligible person shall be admitted to membership if she is invited by any DKG member. The chapter rules simply need to state whatever provision the chapter decides to adopt.

If a chapter wants to be more accessible and welcoming to prospective members, it may choose

to adopt one of these provisions or to adopt some other provision. If the members have concerns about changing their customary way of issuing invitations, they might ask themselves when the last time was that they voted not to admit a woman who was recommended by a fellow member.

At our May meeting, this topic will be a discussion item under New Business.

Projects Committee News

Linda Clapper

Thanks to everyone who brought donations for the Jabulani School, our long distance School in Zimbabwe, Africa. The amount given, at our March meeting, was \$556.50. Your generosity is so appreciated and helps with providing food and school supplies!

Thank you to those who gave to our Weekend Backpack Program! Also, many items were donated at the Live Well Chiropractic in New Paris. Those food items were equally divided among our School Districts.

So far, we have delivered 46 "We Care" Bags to our School Districts. There have been many positive comments about the goal of this project! As needed, they are helping children and teens who are dealing with devastating situations.

March 23, 2024 Meeting

Terry Diehl joined the DKG meeting as we honored his wife, Ellen Diehl at her necrology service.



DKG WELCOMES A NEW MEMBERSHIP DIRECTOR

Sy Franco Stern has joined the staff at DKG Headquarters as our new membership director. She states in a letter of introduction, “With a diverse skill set spanning technology, marketing,



and branding, I bring over a decade of experience in leadership and management to this position. Previously, I served as Creative Director at Dyrwolf, a

cybersecurity firm, and held roles as a project manager at Blockchains LLC., a trailblazing fintech enterprise specializing in Blockchain Technology, Cryptocurrency and Web 3 adaptation. Additionally, I had the privilege of working as a Senior Advisor of Branding and Promotions for the Pacquiao Brand Group, where I played a pivotal role in securing brand sponsorships for renowned boxer Manny Pacquiao during the Mayweather vs. Pacquiao bout.”

She feels a deep, personal connection to the mission of DKG. The struggles of her immigrant parents and their determination and resilience in becoming acclimated to and learning the language of their new culture “left an indelible mark” on her, instilling “values of female empowerment, the significance of education, perseverance, and the importance of withholding judgment based on literacy.”

She is eager to collaborate with each of us to, “enhance membership engagement, leverage valuable insights, and forge meaningful partnerships that amplify our collective impact.”



Recipient of a Teacher Enrichment Grant, Mary Ellen Laird shares how she used the money for the Drama Club at the Northern Bedford Middle School

You are Amazing!!

*Ways and Means Committee Chairs
Lois Stoner & Kris Walters*

Because our chapter's Books and Bargains sale last spring was so successful, it was decided to do a spring fundraiser again this year. One of the suggestions was to try a Craft Show/ Bake/ Soup/ Lunch Items Sale at the same location and approximately the same date. Due to Easter being one week earlier, our fundraiser was held one week earlier.

During the fall and winter months, chapter members visited craft shows around the area handing out informational flyers to perspective vendors. Between these efforts and chapter members contacting "crafty" friends and relatives, other DKG members and the information included in the Bedford Gazette, eventually there was a waiting list for vendor spots.

After numerous emails and snail mail correspondence, the vendor spots were assigned. The "Kitchen Crew" was organized with lots of donations of lunch items and baked goods too numerous to list. Chances were printed and ready to sell.

Setup at East St. Clair Township building went smoothly on Friday with some vendors opting to start the display of items in the evening. Thanks to the generosity of chapter members and vendors, items for the chances were all donated.

A special thanks to Melissa Moorhead for her donation of the lovely Churn Dash Patch Quilt which was the headliner for the chances. Nine other items were donated to complete the display to entice customers to buy the chances. Also, preorders for soup were taken with the jars of this gourmet delight ready to pick up on "sale" day.

Thanks to all members for your generosity, your valuable time, and your hard work to make this event so successful. The final total of \$3010.65

is just amazing! "Way to Go" Alpha Beta members. Stayed tuned for whatever great fundraiser may be planned for next year.

A huge "thank you" to all Alpha Beta members!



Kitchen Crew: Amy Snyder, Laurie Criswell, Tina Smith-Gilbert, Bev Bumbaugh, Kris Walters, Becky Johnen and Samantha Fickes



Judy Conrad, Carol Fritz, Karen Musselman, and Kristen Hall

PROUD OF OUR



GIVING: Everyone who most generously gave \$556.20 to our long distance school, Jabulani (in Zimbabwe, Africa) and who donated food for the Weekend Backpack Program.

TALENTED: **Melissa Moorhead** on the creation of a churn dash patch quilt she donated to the Craft Show Raffle.

MULTI-TALENTED: **Sonya Browell** who played the role of Sarah in the mystery dinner theater “Murder at the Power Plant” held in Saxton in March.

STUDIOUS: **Samantha Fickes** who will be awarded her Masters Degree in Special Education in May.

COLLABORATIVE: Everyone who contributed time, talent, energy, and funds to the extremely successful Craft Show.

DEDICATED: All committee chairs and members for keeping the chapter running smoothly through their hard work and dedication.

NEXT MEETING

May 4 at 9:15am Brunch
The Bistro in Martinsburg
Kentucky Derby Day



To commemorate that event, Becky asks that we all wear our finest hat to the meeting. Let’s share some smiles over what we choose to don on our heads.

STAY CONNECTED

On our chapter website (alphabetadkg.weebly.com).

Watch for new pictures and updated project information and check out the weekly inspirational quote (usually posts on Friday).

On the state website (dkgpa.weebly.com).

Look for the latest posting of Alpha Beta pictures in the Chapters section/Chapter news.

On our Facebook page (DKG Alpha Beta Chapter of PA).