

# The Keystonian

The Delta Kappa Gamma Society International - Key Women Educators

The PENNSYLVANIA STATE ORGANIZATION Official Publication

## 2019 PA State Convention Guest Speakers



**Jane Tanner**  
NERC Director and  
International  
Representative to  
Pennsylvania

Jane is from Central New York, having lived there all her life. She received her AB in mathematics from Cornell University, her MS in Education (secondary mathematics) from the State University of New York at Oswego, and has completed many hours of graduate work at the College of Environmental Science and Forestry and UCLA Extension. Jane taught middle and high school mathematics for four years before heading to Onondaga Community College, part of the State University of New York (SUNY), to teach computer information systems and mathematics. She served as a faculty member there for 36 years, having retired as professor emerita in 2018.

Jane has been married for 17 years to her husband, Andy. For six months a year, they live in the log cabin in NY that he designed and built. This has served as home for her two stepchildren Stephanie and Casey, who in turn have made her a grandma to four grandchildren: Audriana (6), Casey Jr. (5), Grayson (3), and Shelby (2). The other six months are spent in Florida where winters are much kinder.

In 1969, Jane's aunt became a charter member of NY's Beta Kappa chapter. Growing up, Jane heard a lot about DKG and became a member of that chapter in 1991. She has served this chapter as recording secretary, webmaster, and president as well as chairing a number of committees. Currently she is a member of Chi chapter that meets annually with the Nu chapter from Ontario.

On the New York state level, she has served as  
(see Tanner on page 7)

**Dr. Angela Bloomquist**  
Female Empower-  
ment: Understanding  
Harassment and How  
to Help Our  
Youth Respond



Dr. Angela Bloomquist was certified as a school psychologist in 1997 and began working in the field of school psychology in the greater Pittsburgh area. For eight years, she worked as the single full-time school psychologist in the Montour School District in McKees Rocks, Pa.

During this time, she was highly invested in special education identification and program evaluation, provided ongoing workshops and individual consultation to educational professionals, implemented a school-wide bullying prevention  
(see Bloomquist on page 7)

### INSIDE The Keystonian

Strategies for Positive Chapters....	4
US Forum.....	5
Convention Workshops.....	10, 12
Convention Reg.....	11, 13
Helpful Hints.....	15
Slate of Officers..	16, 18-21
Enrichment.....	22-26
Chapter News.....	27-30
In Memoriam.....	31

Think  
Spring

**Pennsylvania  
Alpha Alpha State  
Officers 2017-2019**

**President  
Barbara Gasperini**

**First Vice President/  
Educational Excellence  
Committee Chair  
Eileen Little**

**Second Vice President/  
Membership Chair  
Royce Boyd**

**Recording Secretary  
Joyce Kerrick**

**Corresponding Secretary  
Kristine M. Reynolds**

**Treasurer  
Wanda Keller**

**Parliamentarian  
Carolyn Sutton**

**Webmaster  
(to be appointed)**

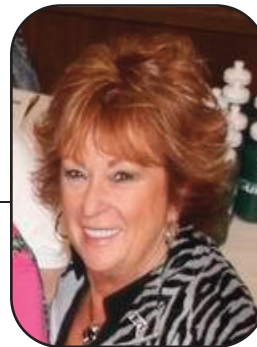
**Website  
[dkgpa.weebly.com](http://dkgpa.weebly.com)**

**Photographer  
Deborah Yargar-Reed**

**Editor  
Bonnie Lee Barnes**

Addresses and phone numbers are  
password protected. Contact your  
Chapter President for password.

**Hello Pennsylvania**  
**Barbara Gasperini, Alpha Upsilon**  
**PA State Organization President**



I cannot believe it is February and this year is sailing by. I have learned a great deal as your state president and have loved every moment. Meeting so many of you in my chapter visits has been a rewarding experience. I am looking forward to meeting more of you in my remaining visits. Your dedication to DKG is uplifting. Your friendships, leaderships, mentorships, scholarships, and fellowships make an unbelievable fleet for Pennsylvania.

Start by joining the Crew and broaden your horizons by attending the Creative Arts Retreat in March. Register now. We will have a terrific time. Please come aboard the USS Pennsylvania at the 2019 State Convention at State College. Meet new women and reacquaint with some old friends. The State Committees have been working very hard to make this convention memorable and exciting.

You will meet Jane Tanner, Northeast Regional Director, as she gives the keynote at the First General Session and will present two workshops of great interest. The workshops this convention will be topics of choice in both the morning and afternoon. If you want Act 48 Credits, please sign up when you register.

Friday evening starts with admiring those women in the Album of Distinction and a reception will follow. I have moved the Executive Board meeting until Saturday during the First General Session which gives you more time to enjoy the Friday Night Fling and more time to join in fellowship with your friends.

At our Celebration Luncheon we will celebrate with Birthday Chapters, members who have been in DKG for 40+ years, doctoral candidates, Newsletter/Web sites Certificates and the Nancy Grove Visionary Awardee.

The Presidents' Banquet will be memorable when we hear Dr. Angela Bloomquist, Professor and Coordinator of California University School of Psychology graduate program. Our state choir will entertain us with wonderful music and sing a special song from me to all of you as I say goodbye as your state president. How important the convention is as we install the 2019-2021 State officers and committee candidates. Then ask yourself, who will be our State Achievement Awardee.

Celebration of Life is on Sunday morning as we honor those sisters who have passed away this year. Then conclude our convention with the Honors Banquet and Second General Session with Scholarships, Enrichment Grants and for the first time the State Attendance Award. Spring is right around the corner. Did you hear that, "Phil?" So let's sail into a new beginning as the season gives us a fresh start and we continue the "Circle of Memberships" we know so well.

Bon Voyage,  
Barbara

# Next Port of Call – State Convention

Eileen Little  
First Vice-President/EEC Chair



**T**he next port of call will be State Convention. Your Educational Excellence Committee will be there, will you? EEC has been busy working and promoting personal and professional growth. Let's reaffirm our seven purposes – *to unite, to honor, to advance, to initiate, endorse and support, to endow, to stimulate, and to inform.* This is our work and our focus. Your EEC committee is here to help you and your chapter. In this *Keystonian* check out the articles regarding:

**Projects** – What are we doing as a state with Barbara's Girl Scouts Project?

**US Forum** – What can we do to remain knowledgeable about current issues?

**Professional Affairs** – How can we recognize a sister for Album of Distinction?

**Visual & Performing Arts** – How can I share my talents at convention?

**Convention Workshops** – Which workshop, personal or professional, interest me?

You will want to mark your calendars, make your reservations and come to State Convention! At Convention you will have time to learn and grow professionally, meet old friends and make new friends. You will have time to network with sisters and learn what are they doing in their chapters. Maybe you will get a new idea for a meeting, a project or a social activity that you could take back to your chapter. You will join in the celebration of our birthday chapters, members with forty years or more memberships, chapters newsletters and website awards, and just have fun at the Friday Night Fling!

I hope State Convention is on your to do list – I'll see you there!



## DKG/Girl Scout Connections

Marj Paradise, Chi  
Projects Chair

**P**ennsylvania is in the home-stretch with President Barbara's selected state project: DKG/Girl Scout connections!

Many chapters have supported local Girl Scouts Groups with the requirements for earning the DKG Council Patch. Please plan to attend the Girl Scouts Awards Ceremony to present the patches from your chapter!! This has been an exciting and collaborative adventure! Great relationships have been developed and are leading to further joint activities.

As a reminder: It is never

too late! We now have a streamlined method of ordering Council patches from the DKG Society Store: Check it out at:

Council patches can be ordered for \$2.00 each from:

<http://www.dkg.org/girlscout>.

You may also contact Tracey Wilson, DKG Assistant Membership Director at [REDACTED]

**AS WE PREPARE FOR JUNE CONVENTION, PLEASE PLAN TO BRING A PAGE TO BE ADDED TO OUR NOTEBOOK WHICH OUTLINES YOUR ACTIVITIES...**

**FEEL FREE TO INCLUDE PICTURES! IT WILL BE GREAT TO SEE OUR COMBINED EFFORTS!**

PLEASE, don't forget our other projects: Supporting Early Educators and Schools for Africa! How have your chapters been involved with these valuable project?

Please keep our Projects chairperson, Marj Paradise, informed of your progress. You can [REDACTED]

# Strategies for a Positive Chapter Environment

Royce Boyd, Alpha Beta  
2nd Vice President/Membership Chair



As I was perusing the DKG International Website for Regional Conference information, I came upon the Tools icon, so I clicked on it. Naturally I had to do a deeper dive to see what was there. I found myself reading an article on Strategies for a Positive Chapter Environment. By no means do I want you to think that my chapter doesn't have a positive environment, I was just curious to see what surveys, informal research and records had to say about positive chapter environments. What I did find interesting is that this article had 7 sections and 4 of them involved the word(s) member or membership in the title.

The first section is titled **Engage All Members**. Ten bulleted items were suggested, each one of them beginning with a verb such as offer, ask and inform. Using these 10 strategies advocates that all members should be involved at some level in their chapter's growth and sustainability.

Another section of the article is **Nurture Member Relationships**. Again, there are bulleted tenets on nurturing members. In this section the verbs used are more personal such as hold, encourage and provide, all suggesting ways to build rela-

tionships with each other.

The third section discusses **Recruiting and Retaining Members**. More bullet points are presented with a mix of active verbs and common sense. However, this piece is a very good summary of the Membership Recruitment Plan.

Finally, the section on **Celebrate Membership** is discussed. The bulleted points make great suggestions with more verbs that elicit ideas for fun and friendship that in turn helps build a positive chapter environment.

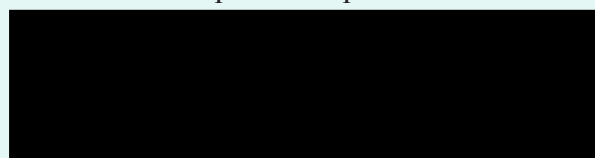
From reading this article, I gleaned a better understanding of how symbiotic a positive chapter environment and membership really can move DKG forward. But all of us need to focus on members and membership. If your chapter Engages, Nurtures, Recruits and Celebrates members, a positive environment that moves your chapter forward will ensue.

If you would like to read the full article – Strategies for a Positive Chapter Environment go to the DKG website, click on the Tools icon then choose Chapter Tools, another click at Chapter Strengthening and finally scroll down to **Strategies for a Positive Chapter Environment**.

## Historical Records Requests Your Help

Kathy Lauer, Beta Beta  
Historical Records Chair

The Historical Records Committee is in the process of collecting and making hard copies of photos of Barbara's biennium for her scrapbook. We are asking chapters to send to our committee photos of presidential visits.



## 2010 Creative Arts Retreat

Where imagination helps turn the  
wheel of Fellow~ship and Friend~ship

March 29-31, 2019  
Olmsted Manor, Ludlow, PA

Save the date.  
Send registration by March 4, 2019  
or register online at

[www.dkgpa.weebly.com](http://www.dkgpa.weebly.com)



# Notes from the US Forum - "It's a New Year!"

Susan Fritz, Chi

U.S. Forum/Educational Legislation Chair

**B**arbara Bostwick-Quinn, US Forum Northeast Regional Representative, recently provided a newsletter from which the following information is excerpted:

~ 1) As the new Congress starts there are a few items that you might want to support: The Violence Against Women Reauthorization Act of 2013 (VAWA 2013) amended the VAWA Act of 1994. The program provided grants to states for programs that provided programs to prevent violence against women and provide services for victims of violence. The 2013 program addressed victims evicted from their homes because of events related to domestic violence and stalking; rape crisis centers; programs that assisted immigrant women and women of different races or ethnicities; victims with disabilities; legal aid for domestic violence survivors and was expanded to include the LGBT and Native American populations. *The 115th Congress allowed the Violence Against Women Act (VAWA) to expire.* Since Congress first passed VAWA 24 years ago, the program has funded prevention programs like the National Domestic Violence Hotline, which has received more than 4 million calls since its launch, and hundreds of nonprofit organizations and social service programs that provide housing, counseling and legal aid to survivors of violence.

## **H.R. 1: RESTORE OUR DEMOCRACY (02)**

**H.R. 1**, the first bill of 2019, focuses on election reform. In the last Congress, the House Permanent Select Committee on Intelligence (HPSCI) worked on bills aimed at preventing foreign intervention in elections.

~ 2) Websites that may be of interest:

[Gov.track.us](http://Gov.track.us) This is an excellent resource for finding information about your Congressional Representatives and Congress. You can sign up to get alerts on legislative actions, information on bills and status; committee work. It's a great way to get updated on what is going on.

[Opensecrets.org](http://Opensecrets.org) The Center for Responsive Politics is a nonprofit, nonpartisan Washington DC based research group that tracks the effects of money and lobbying on elections and public policy. It is a public

online database that enables interested members to view data and statistics that are useful in speaking about legislative issues.

[www.cawp.rutgers.edu](http://www.cawp.rutgers.edu) CAWP: Center for American Women and Politics. Provides research and education issues on women, legislation and politics.

[pewresearch.org](http://pewresearch.org) The Pew Research Center is a nonpartisan fact tank that follows issues, attitudes and trends. They are often cited in various media reports.

~ 3) Save these Dates!

**August 1, 2019:** US Forum at the DKG International Global Awareness Conference in Mashantucket, CT

**March 15-18, 2020:** National Legislative Seminar in Washington DC.

On a different note, PA US Forum has been exploring ways of having our voices heard legislatively and providing information that makes a difference to our membership. One issue raised pertains to the establishment of a National Women's History Museum (NWHM). A recent magazine stated that the National Women's History Museum will have a physical presence in Washington, DC by August 2020 to celebrate the ratification of the 19th Amendment which gave women the right to vote. The Museum is investigating potential sites for a physical location near the National Mall.

Currently, the NWHM is online and is accessed by 1.2 million visitors annually and has nearly 500,000 followers. When you start to explore this museum, you will find delightful pieces of history that certainly never made the curriculum in my history classes. I suspect you also may feel that this wonderful store of information needs a prominent and physical presence. In the meantime, if you are looking for information about women and their impact, you will find posters, lesson plans for all ages, and 300 biographies.



# Album of Distinction

Haddie Webber, Alpha Phi  
Professional Affairs Chair

**T**he 2019 State Convention is fast approaching. The Educational Excellence Committee is very busy in preparation for this exciting event. All chapters are encourage to submit candidates for the 2019 Album of Distinction Award. The honor/distinction must have been received during the 2018 calendar year (January 1, 2018 - December 31, 2018)

The Album of Distinction (AOD) is given to recognize a sister who has already received an honor or distinction beyond DKG. This award supports Purpose#6: To stimulate the personal and professional growth of members, and to encourage their participation in appropriate programs of action.

The nomination form must be submitted by email on or before March 1, 2019 or sent by US mail and postmarked on or before **March 1, 2019** to Haddie Weber

in order to be recognized at State Convention 2019.

All Album of Distinction awardees will be honored on Friday Night June 14, 2019 at the Album of Distinction Ceremony. All awardees will be notified by May 1, 2019, so there is ample time to register for State Convention

The nomination form may be found at [www.dkgpa.weebly.com](http://www.dkgpa.weebly.com). Click on Awards and download the Criteria, Application and Rubric Cube. Have any question or concerns please feel free to



Our committee is looking forward to receiving your nominations forms.

## State Store Sale.....no no, not liquor!

We will have a State Store Sale in the Atrium to sell some of the extra items we have, with a savings we would like to pass onto you. Great for gifts for you or DKG friends or new initiates. Take a peek as you join us at the convention in June.

Barbara

## CALLING ALL SINGERS!!



**Board the Ship and Sail on Another  
Convention Adventure!!**

If you love to sing and are planning on attending the 2019 DKG Pennsylvania State convention, please consider singing in the Choir!!!

Beta Theta will be hosting the Choral Rehearsal Friday evening, May 3<sup>rd</sup>. We will meet for dinner and rehearse from 6:00-9:00 P.M.



The Presbyterian Congregation Church  
290 N. Union St.  
Middletown, PA 17057

This is **NOT** a prerequisite to sing in the choir.

If you cannot attend this rehearsal, I will gladly send you the folder of music. That way you have the opportunity to look it over before convention.

You will be able to sign up for the retreat online at the DKG Pennsylvania website!

I am looking forward to a great time of fellow~ship and making music together.

Let's Get On Board The Ship!!!



Nancy L. Hills, Psi



Visual and Performing Arts Chair



**(Tanner from page 1)**

Executive Secretary, Treasurer, and President as well as treasurer and vice-chair of the state foundation. Currently she is a member of the Gladys L. Mersereau Grants-in-Aid Committee as well as the State Achievement Award Committee. (She received this award in 2005.)

Internationally, Jane has been to every Northeast regional (now an international conference) and international convention since 1995. She has served on the International Research, Golden Gift Fund, and Finance committees as well as serving as chair of the Delta Kappa Gamma Educational Foundation. She is now busy as the Northeast Regional director and will be coordinating this summer's Global Awareness International Conference in

Mashantucket, CT.

In the last issue of the *Collegial Exchange*: Vol: 85-2, Jane tells how her leadership in DKG propelled her to become active in her national mathematics organization. She is currently the immediate past president of AMATYC, the American Mathematical Association of Two-Year Colleges. Between DKG and AMATYC, Jane has travelled throughout the U.S. and Canada giving presentations on mathematics and issues related to DKG.

In her spare time, Jane is an avid sports enthusiast as well as being an accomplished stitcher. She enjoys doing all types of puzzles and has done many presentations on Sudoku. Jane looks forward to visiting Pennsylvania in June.

**( Bloomquist from page 1)**

program, developed a crisis-response team, worked to establish district norms using curriculum-based measurement and created a videotape titled "Introduction to the IEP" for parents to review in order to better understand special education procedures and to facilitate family-school relationships.

She was invited to teach Educational Psychology as a teaching associate at Indiana University of Pennsylvania for three semesters beginning in 1997. In 2005, she joined the faculty at IUP as a temporary assistant professor. She also served as the acting co-coordinator of the Peer Educator Program within IUP's Learning Enhancement Center and was inducted into Phi Kappa Phi.

In 2008, she accepted a full-time tenure-track position at Cal U as assistant professor in the Psychology Department. Soon after, Bloomquist became

the host and an educational consultant for "Meet Me at the Great Tree," an original children's television program produced by the National Network of Digital Schools. This public service announcement was designed to get preschool and kindergarten children excited about learning and literacy. Now a full professor and Coordinator of Cal U's School Psychology graduate program, Dr. Bloomquist devotes much of her effort to professional training issues and program evaluation. Recent research interests include quantifying and cultivating professional dispositions in educator preparation programs as well as University planning for national accreditation reviews. In addition to teaching and research, Dr. Bloomquist serves on numerous University committees with the intention of having a positive impact on student success across programs. Ultimately, she aspires to inspire the next generation of educators.

## **Birthday Chapters to be Recognized at State Convention, 2019**

- ~ 65 Years Alpha Zeta (June 3, 1954)
- ~ 55 Years Beta Kappa (April, 24, 1964)
- ~ 45 Years Beta Xi ( November 23, 1974)
- ~ 35 Years Beta Rho (May 12, 1984)
- ~ 15 Years Beta Sigma (August 28, 2004)

## **Chapter Newsletter Editors!**

Please send a copy of your Chapter Newsletter to DKG PA State Communications Chair, Linda Nickerson at [REDACTED]. Linda will also post them on the DKG PA Webpage. Keep sharing those great DKG moments of your Chapters!

# Planning for your Chapter's Future: Tips for Updating Chapter Rules

Louann Shrader, Omega  
Rules Committee Chair

**D**uring this last year of the current biennium and into the first year of the next biennium chapters should be working to update their chapter standing rules based on the passed amendments at the International in Austin last summer. In the previous *Keystonian*, Vol. 74:3, issues that affect chapters were highlighted: dues and membership; the use of the word 'induction;' induction fee; and geographic name.

Of most important to the sustained growth of the Society is the inclusion of a new classification of membership - Collegiate Membership. Most chapters cover territory in proximity to universities and education centers and have the ability to draw from possible future teacher candidates. In addition, chapters often give recruitment grants to those already matriculated and studying for a degree in education. Thinking future, recruitment grants can easily be combined with Collegiate Membership as you go forward in amending your chapter rules. The following information will highlight where changes need to be made in your chapter rules regarding Collegiate Membership.

Potential undergraduate collegiate members will have been enrolled and studying towards an education degree for the last two years of their undergraduate work and have the intent to continue academically and professionally in the field of edu-

cation. Potential collegiate graduate students should have graduate standing in an institution offering an education degree and have the intent to continue academically and professionally in the field of education.

Financially, Collegiate Members will pay the same reserve dues internationally as reserve members, that is, \$20 annual dues. Pending an affirmative vote from the membership on our revised and amended state bylaws and standing rules at the next state convention, state collegiate membership dues would be the same as reserve membership. (Though International dues were passed in Austin, as a State we will need to consider what our state Collegiate Membership dues shall be.) ***Chapters have the power to set their own dues for Collegiate Membership. They may not charge at all or charge a specific amount. This would have to be in the amended chapter standing rules and voted on by the membership of the chapter.***

Lastly, even though a chapter may not look to bring in collegiate members in the near future, Collegiate Membership does need to be addressed in chapter standing rules as another classification of membership. The power chapters have is determining the fee if any. And as a reminder, all chapter updated standing rules need to be sent to the State Rules Committee to check for compliance and to update what is currently on file.

## Interested in becoming the DKG PA State Web Master?

**The State Webmaster Ad Hoc Committee is looking for a member to maintain the official PA State Organization website. Duties, qualifications, and application form are available at [dkgpa.weebly.com](http://dkgpa.weebly.com). Applications must be submitted to [REDACTED] by **March 25, 2019**.**



# Finance Committee Report

Mary Wilhelm, Kappa  
State Finance Chair

The State Finance Committee will soon be meeting to prepare the budget for 2019-2020.

To ensure that our budget meets the needs of the Pennsylvania State Organization, we are requesting that all State Committee Chairs and Officers submit budget requests by **March 15, 2019**. Requests

[REDACTED]

a request, the Finance committee will assume that your committee is satisfied with your current level of funding.

I also want to remind those Chapter Presidents who received an evaluation form on the per-

formance of the State Treasurer or the *Keystonian* Editor, to return it by **April 1, 2019**. It will be used to determine their stipends for the coming year. (This survey was not sent to all chapters.)

Also, a reminder that chapter bank statements, receipts, and budget reports should be maintained for four years. Copies of the Membership Form 18 should be maintained for seven years.

Thanks to all chapter Finance Chairs and Treasurers for your diligence in keeping orderly chapter records and for sending forms and information to the State Treasurer and the State Finance Chair in a timely manner.

# PA State World Fellowship Recipient Update

Gisele Rinaldi Siebold, Chi  
World Fellowship Chair

Mehr Javed is the World Fellowship recipient who is studying at Carnegie Mellon University, in Pittsburgh. She is earning her master's degree in Public Policy and Management. She keeps in touch with me and several other members of the Pennsylvania State organization of Delta Kappa Gamma Society International. If you would like to send her an email, her email address is: [REDACTED] (In the fall, her mailing address was sent to the chapter presidents and World Fellowship Chairs, as we are required not to publish it due to confidentiality.)

As you will read in the following note, Mehr will be graduating in June. If you are the president or member of a chapter in or near Pittsburgh, please contact me if you are interested in celebrating her graduation with a DKG get together so that we can make arrangements as early as possible. My email address is [REDACTED]. It would be a joyful occasion to gather in celebration of a fine young woman studying so far from her home country! Here is the latest note from Mehr:

*Thank you for reaching out, and for the birthday wishes! I hope you are well, and keeping warm!*

*I am now in the middle of my last semester at Carnegie Mellon and will be graduating by June of this year. This semester I am taking the following classes: "Telling Stories with Data," "Programming R for Analytics," "Data Mining," "Advanced Applied Econometrics," and "Behavioral Economics of Poverty and Development."*

*Life at CMU is always challenging but also incredibly rewarding. I have learned so much, not only from professors who are the very best in their fields, but also with peers who are some of the most intelligent and driven individuals I have ever met. It has been such a transformative experience, and I am so grateful to have had this opportunity.*

*My warmest regards to everyone in the society! It was wonderful hearing from you.*

*Best,  
Mehr*

## 2019 Convention Workshop Information

Workshop titles and descriptions are included. If you are an active teacher and wish to receive Act 48 hours, please indicate this on the registration form. Further information will be given to you when you register at the convention.

### MORNING WORKSHOPS

**Jane Tanner, DKG International**  
**Guest:** *"Building Confidence with the New Dues Processing Procedure"*

Learn more about the new dues processing procedure beginning with the 2019-2020 fiscal year. Become familiar with the electronic process that will compute all mathematical calculations to lighten the work for both chapter and state organization treasurers. Open to all, but most beneficial for chapter treasurers.

**Diana Borowski, Alpha Sigma**  
**Education:** *"CommonLit Digital in the Secondary Classroom"*

CommonLit.org is a free digital resource, designed to raise student achievement in reading and writing. This workshop will demonstrate how to incorporate CommonLit into the Middle or High school classroom.

**Becky Johnen, Alpha Beta**  
**Education-Health & Wellness:** *"Taking things in Stride"*

Do you get overwhelmed at times with everything going on in your life? Does this lead to worrying about things, especially those out of your control? Do you

tend to overreact? Hold on to something too tightly? If so, this presentation which will explore eight advantages of taking things in stride and give you practical strategies and exercises to help you keep the little things from taking over your life will be of help to you.

**Faith Jack, Alpha Xi**  
**Education- Genealogy:** *"What I learned from my Mother's Roller Skate Case"*

A case study in genealogy spurred by family memorabilia leads to the DAR and possibly the Mayflower Society among the family skeletons. Resources for researching your genealogy will be discussed.

**Melissa Flynn, Alpha Beta**  
**Enrichment, Health & Wellness:** *"Meditation and Yoga for Clarity, Peace and Balance"*

It's a joy to collect ourselves as we develop mindfulness. Learn about the practices of yoga and meditation as tools leading to clarity of mind and a stable inner presence.

**Judith Schaeffer, Alpha Upsilon**  
**Gardening:** *"Straw Bale Gardening"*

Learn about a new system of gardening based on using straw bales which can be done anywhere outside. No digging in the dirt. Perfect for small areas or porches. Become an urban gardener in 2019.

### AFTERNOON WORKSHOPS

**Jane Tanner, DKG International**  
**Guest:** *DKG Round Table, "What's On Your Mind?"*

Join your DKG International Society Representative for an informal round table discussion of Society topics that interest you. This opportunity is open to all members, and will especially benefit chapter officers.

**Susan Allen, Chi**  
**Education:** *"Breaking Out! An Escape Room in the Classroom"*

This workshop will introduce you to Breakout EDU, Escape rooms in the classroom. Come experience a breakout game based on your DKG knowledge. Every member of the team will need to work collaboratively to breakout!

**Dr. Stacie Molnar-Main, Nu**  
**Education:** *"Teaching with Deliberation"*

How can teachers model effective civic learning and engagement, especially on issues that are important to society but are difficult to talk about? In this workshop, participants will experience "public deliberation," a civic and classroom practice that offers a productive way to frame discussions to support productive discourse on a range of issue. Teachers have used deliberation to teach about contemporary issues, like immigration or the national debt; to engage students in historical perspective-taking by teaching historic decisions; and to teach enduring questions in literature by  
(see Workshops on page 12)

**Please print ONE Name per form. Send this entire form to:  
Barbara Tobias, Convention Treasurer**



Name \_\_\_\_\_  
 Title \_\_\_\_\_ Last \_\_\_\_\_ First (as preferred on name badge) \_\_\_\_\_  
 Address \_\_\_\_\_  
 City \_\_\_\_\_ State \_\_\_\_\_ Zip Code \_\_\_\_\_  
 Local Chapter \_\_\_\_\_ Phone Number \_\_\_\_\_  
 E-Mail Address \_\_\_\_\_

**Please check ALL pertinent categories:**

☐ Chapter President ☐ First Timer to Convention\* (Complimentary Saturday breakfast)  
☐ State Officer and/or Committee member ☐ Member since 1979 or earlier: Year initiated \_\_\_\_\_  
☐ State Chorus participant ☐ Sat. Workshop Presenter\*\* (Complimentary Sat. luncheon)  
☐ Honorary Member or Guest ☐ Interested in Act 48 credit hours for attending workshops  
☐ Doctorate degree in 2018-19 ☐ Chapter Focus Table—Saturday only (include \$30 with registration)  
☐ Interested in Friday wine tasting (include \$ 5 nonrefundable with registration)

**Registration (non-refundable, postmarked on or before May 13, 2019.) Late registrations between May 14-May 31.**

**No reservations or cancellations may be made after May 31, 2019. Tickets will be collected for all meal functions.**

**Checks payable to Delta Kappa Gamma. (If you must cancel, please call 717-273-0585.)**

	Weekend .....	\$35.00	\$ _____
OR	One Day: Friday, June 14 .....	10.00	
	Saturday, June 15 .....	20.00	
	Sunday, June 16 .....	10.00	_____
Late Registrations (Postmarked between May 16-May 31).....		Double above	

MEALS:	Saturday, June 15, 2019	
	Continental Breakfast* .....	15.00
	Celebration Luncheon** .....	25.00
	Presidents' Banquet .....	45.00

**Please select**  **or**  **for Banquet**

Sunday, June 16, 2019

Breakfast Buffet.....	25.00
-----------------------	-------

**Menus are posted on our website. For special dietary needs, mark below:**

\_\_\_\_\_ Gluten-free diet \_\_\_\_\_ Lactose intolerant \_\_\_\_\_ Diabetic \_\_\_\_\_  
 \_\_\_\_\_ Vegetarian \_\_\_\_\_ Allergy to \_\_\_\_\_

**TOTAL \$** \_\_\_\_\_

**WORKSHOP REGISTRATION FOR SATURDAY MORNING (Please check one below):**

<u>      </u> Building Confidence with the new dues processing procedure	<u>      </u> CommonLit Digital in the Secondary Classroom
<u>      </u> Taking things in Stride	<u>      </u> What I learned from my Mother's Roller Skate Case
<u>      </u> Meditation and Yoga for Clarity, Peace and Balance	<u>      </u> Straw Bale Gardening

**WORKSHOP REGISTRATION FOR SATURDAY AFTERNOON (Please check one below):**

\_\_\_\_\_ What's on Your Mind? DKG Round Table      \_\_\_\_\_ Breaking Out! An Escape Room in the Classroom  
 \_\_\_\_\_ Grief and Mourning. Will I survive and thrive?      \_\_\_\_\_ Watercolor Painting in Maine through an Enrichment Grant  
 \_\_\_\_\_ Teaching Deliberation      \_\_\_\_\_ Let food be thy Medicine, and Medicine be thy Food (attributed to Hippocrates)

### (Workshops from page 10)

linking literary study to contemporary dilemmas. Importantly, deliberation offers an approach to social and civic engagement that teachers can use in their daily lives to build relationships and find common ground with co-workers, family members and neighbors.

#### **Cindy G. Reynolds, Beta Rho Enrichment Grant, Art:**

*“Watercolor Painting in Maine Through an Enrichment Grant”*

So are you thinking about applying for an Enrichment Grant. Cindy will share her experience as a recipient for her week-long watercolor painting trip to Owls

Head, Maine. She will also give tips and suggestions for completing and submitting the application. This workshop will convince you to apply!

#### **Dr. Marjorie Paradise, Chi Education- Health & Wellness:**

*“Grief and Mourning. Will I survive and thrive?”*

We all experience loss. The impact of the loss and our responses shape our future. Learn how to acknowledge, express, reflect and cope with such heartaches by using healthy strategies. The presenter has experienced many life losses, including the sudden death of her

daughter, Liz, in 2015. Through her personal and professional experience, you will hear and learn how to carry the load of grief through life.

#### **Marianne T. Bartley ED.D, Nu Education- Health & Wellness:**

*“Let food be thy Medicine, and Medicine be thy food” (attributed to Hippocrates)*

We’ve all heard it. “Self-Care” is more important than ever with it comes to “Health Care.” In this workshop we will identify and discuss the importance of antioxidant foods, healthful fats and staying health and aging gracefully.



## **Attendance Recognition Award**

**2019 PA State Convention  
Start Sailing on the  
USS Pennsylvania  
June 14-16, 2019**

**All DKG-PA Chapters will receive one \$35.00 registration fee award for having 10% of their chapter membership in attendance at the 2019 DKG PA State Convention.**

#### **Criteria:**

**Chapter members attending the convention must be in attendance for ALL sessions on Saturday and Sunday of the convention**

**Those Chapters receiving this Attendance Award will be announced Sunday, during the General Session, and will receive their monetary award and certificate.**

**Take this voyage and earn the Award to be used by you chapter for one of your members. Steer your members in the right direction by boarding a new ship and experience what DKG PA is all about at the State Level.**

**Hope to see you on the  
USS PENNSYLVANIA**

**Bon Voyage,  
Captain Barbara**



## Lodging Reservation Form

### Pennsylvania State Convention June 14-16, 2019

Penn State Hospitality Services  
Central Reservations Dept.  
215 Innovation Boulevard  
State College, PA 16803  
pennstatehotels.com  
800.233.7505 FAX: 814.863.5004

This form should be sent directly to Penn State Hospitality Services. For phone Reservations, be sure to mention our DKG Society ID#: #DELF

*Please Print*

Check-in time: 3:00 p.m.

Check-out time: 12:00 noon

Arrival Date \_\_\_\_\_ Departure Date \_\_\_\_\_

Name \_\_\_\_\_ E-Mail \_\_\_\_\_

Address \_\_\_\_\_ Phone\_(\_\_\_\_\_)\_\_\_\_\_

City \_\_\_\_\_ State \_\_\_\_\_ Zip Code \_\_\_\_\_

Rooming with \_\_\_\_\_ one bed \_\_\_\_\_ two beds

Special Requests \_\_\_\_\_

Please guarantee your reservation by giving a major credit card number or advance deposit in the amount of one night's room and tax. Seventy-two (72) hours advance notice is required for cancellations.

Guarantee: Deposit Amount \_\_\_\_\_

Or Credit Card Name/Number \_\_\_\_\_ Expiration date \_\_\_\_\_

Room Rates (add 8.5% occupancy tax):	Single:	\$136.00 per night
	Double:	\$136.00 per night
	Triple:	\$136.00 per night
	Quad:	\$136.00 per night

*Rooms must be occupied by persons making the reservation under DKG Society ID #DELF19A.  
Notify hotel if there is a substitute person taking that room.*

**RESERVATION DEADLINE: MAY 13, 2019** – There are a limited number of rooms in our block, so please reserve early.  
Rooms are available on a first-come, first-served basis.

## Convention Evaluation Feedback

### Convention Kate: Volume 3

**Dear Convention Kate,**

*Why does Convention always have to be in State College? Can't we alternate locations between Eastern and Western PA each year?*

State College is centrally located, causing no one to travel more than 3 hours from any part of the state. Because of its centrality, conventions located here stand a better chance of higher attendance. In addition, we have over the past several years consistently received wonderful service and accommodations at the Nittany Lion Inn. But speaking of the NLI, read on....

**Dear Convention Kate,**

*My chapter sisters never stay at the Nittany Lion Inn when we come to convention because it is too*

*expensive. Wouldn't it be more economical to book rooms in smaller, less expensive motels?*

While we applaud your frugality, it may not be in the best interest of state convention. Each year, the convention staff and the NLI establish a pre-agreed upon number of rooms (a block) for convention attendees. If that block is filled, then the hotel can extend certain perks to PA State Organization like meeting rooms free of charge and complimentary rooms for our International guests and keynote speakers. Without these perks, costs to the attendees would skyrocket. So when you book a room at the NLI, not only are you affording yourself convenience by always being within walking distance of every event, but you are actually helping us to hold down convention costs.

#### STATE PRESIDENT'S SCHEDULE

February 14, 2019	- Delta Xi Chapter Visitation, The Villages, FL
March 23, 2019	- Scholarship Meeting, Lancaster, PA
March 29-31, 2019	- Creative Arts Retreat, Olmstead Manor, Ludlow, PA
April 13, 2019	- Lambda, Alpha Omicron, Alpha Sigma, Zeta Chapter Visitation
April 27, 2019	- Xi and Nu Chapter Visitation
May 2, 2019	- Sigma Chapter Visitation
May 10, 11, 2019	- Finance Committee Meeting, Lewisburg, PA
May 15, 2019	- Alpha Upsilon Chapter Meeting, Lower Burrell, PA
May 18, 2019	- Alpha Zeta, Phi, Beta Rho Chapter Visitation
June 14-16, 2019	- State Convention, Nittany Lion Inn, State College, PA
June 16, 2019	- Administrative Board Meeting, Nittany Lion Inn, State, PA
June 27-29, 2019	- International Conference, Arts and Humanities, Asheville, NC
July 7- 11, 2020	- JW Marriott, Philadelphia, PA

#### Important Dates to Remember

March 29-31, 2019	- Creative Arts Retreat, Olmsted Manor, Ludlow, PA
June 14-16, 2019	- Pennsylvania State Convention, Nittany Lion Inn, State College, PA
June 27-29, 2019	- International Conference, Arts and Humanities, Asheville, NC
July 10-12, 2019	- International Conference, Leadership, Des Moines, Iowa
July 17-20, 2019	- International Conference, Technology, Costa Mesa, CA
July 25-27, 2019	- International Conference, Professional Research and Practices Reykjavik, Iceland
July 30-Aug. 1, 2019	- International Conference, Global Awareness, Mashantucket, CT
July 7-11, 2020	- International Convention, J.W. Marriott, Philadelphia, PA

# Helpful Hints for the 2019 Convention

**P**lease Join Our Crew whether it is your first time at convention or you are returning on a voyage. Here is the information that will help you get the most out of your weekend.

## **Dress for the convention weekend:**

Friday-casual

Saturday-Business/school clothes

Saturday Evening- your best dressy

Sunday-traveling clothes

The **choir** will be rehearsing throughout the weekend. Even if you did not attend the choir retreat, you can still join in and sing with the group.

There is **air conditioning** in the Nittany Lion Inn (NLI), so please dress in layers or bring a sweater, shawl, or light jacket.

**Evaluations** are important. Before you leave on Sunday, please turn in your evaluations or go to the state web site and fill out an online evaluation.

President Barbara's **signature drink** will be a "Fleet of Margarita's," available all weekend.

## **Friday**

Register when you arrive at the NLI. You will receive a **card tag** to put in your vehicle to park for free in the adjacent garage.

Bring your sparkly "**bling lanyard**" from the previous conventions.

Place suitcases in your room then visit the registration table to register. Pick up **registration package** and the Program. Put your name in your program in case you misplace it.

Check out our "**State Sale Store**" at the Atrium for items from previous conventions at great prices. Gifts for DKG friends, initiates or yourself.

Everyone will receive a **Briefcase Tote bag** this convention.

Good for convention use. Later it will be great for you laptop, iPad and or phones.

Make sure you buy chances for the **raffle baskets** donated by the chapters. Proceeds from the raffle baskets defray the convention costs.

There are **appropriate times** to put your tickets in the baskets when meetings are not going on. Make sure you see the schedule within the convention booklet.

Bring **address labels** to place on your basket raffle tickets. It is so much easier than writing your name and address on every ticket. Remember winner need not be present.

If you plan on dining at the NLI, make **reservations**. The dining room and Whiskers fills up quickly. If you do not make reservations prior to the convention, you may not get seated. Contact the hotel restaurants in advance. This hint applies to all establishments in the State College area.

Attend the **Album of Distinction**, presented by our State Professional Affairs Chair, Haddie Weber, as we recognize our members' accomplishments outside DKG. Please join us at the reception following the presentation.

The **Friday Night Fling**, presented by our EEC State Chairman, Eileen Little, is so much fun and is open to all convention attendees. Come meet everyone.

## **Saturday**

The **Executive Board Meeting** is mandatory for all Chapter Presidents, State Officers and Past State Presidents. All members of the society are asked to

attend. Our State President, Barbara Gasperini, moved the Executive Board meeting from Friday evening to Saturday morning during the First General Session. This will give you more time to visit with friends on Friday.

All **First Timers** to the convention are invited to attend the Continental Breakfast. You will get to meet members of the Membership Committee, State Officers, and other First Timers. Be sure to sign up for the breakfast on your registration form.

Attend the **First General Session**, presided by our State President, Barbara Gasperini and hear our North East Regional Director, Jane Tanner, bring greetings from International. She will be our Keynote Speaker and will also present two workshops.

Attend **workshops** in the morning and the afternoon. There will be subjects of interest and some will be for Act 48 credits. If you want Act 48 Credits make sure you mark that on your registration form. If you are a workshop presenter this year at the convention, please make sure to mark that on your registration. Your luncheon meal is complimentary.

Celebrate with our **Birthday Chapters** at the **Celebration Luncheon** presented by our EEC Chairman, Eileen Little. Honor our members with 40 years of DKG membership. Congratulate those members who have received their doctorate degrees and those chapters who have received awards from the State Communication Chairman, Linda Nickerson

(see Convention Hints page 16)

**(Convention Hints from page 15)**

for their Web site and Newsletters.

**Saturday Banquet**, presiding Royce Boyd. Second Vice President, is always a wonderful event and this year's will be filled with meaningful moments, the **Installation of our 2019-2021 State Officers**, by the Northeast Regional Director, Jane Tanner, the **2019 State Achievement Award** will be presented by Carol Hartley, to a very deserving member of our State Organization, and the State

**Convention Choir** directed by Nancy Hills, Visual and Performing Arts Chairman, will share their talents with all of us. We will hear our guest speaker, **Dr. Angela Bloomquist** speaking on Female Empowerment.

**Sunday**

The **Celebration of Life**, presented by Royce Boyd, State Membership Chairman, is our time to remember those sisters who have passed away since last year's convention. It is a beautiful and

memorable ceremony.

At the **Honors Breakfast, Second General Session**, we will share the excitement of those receiving **Scholarships and Enrichment Grants** presented by our State Scholarship Chairman, Lois Brown. Also we will honor our chapters with the State Attendance Award presented by our State Communications Chairman, Linda Nickerson.

Check Out and Safe Travels Home.

## Nominees for State Nominations 2019-2021

### Nominee for President: Eileen Little, Chi



Eileen Little is currently serving as the State's First Vice-President and EEC Chair. During the 2015-2017 biennium, she was the State Second Vice-President and Membership Chair. She has served on State Committees from 2005 to 2014. They include Membership, Projects, and Nominations. Her attendance at conventions include every State Convention since her initiation in 2003. She has also attended the 2011 NERC in Hershey; the 2015 NERC in Baltimore; the 2017 NERC in Windsor, Ontario; and the 2016 and 2018 International Conventions in Nashville and Austin.

At the Chapter level she has served as second vice-president, first vice-president, president and chaired the social, initiation, nomination and projects committees as well as serving as the chair of the Chi Chapter 70th Anniversary Celebration.

Her professional experiences include regular education teacher of kindergarten and first grade, gifted support teacher grades 1-6, adjunct Professor at Millersville University and her current position as Gifted Coordinator for Hempfield School District K-12.

Eileen's vision for Pennsylvania and why she would like to serve as President: "As Pennsylvania State President I want my sisters to know that they each have a voice and a choice. I would encourage members to use their skills and passions to accomplish the goals and initiatives of DKG.

*Using our seven purposes as our action plan, we would communicate, collaborate and think critically and creatively. I would be an active listener maintaining an open mind to new ideas. I would want my actions, grit and belief to overcome and achieve to motivate my DKG sisters. Pennsylvania State and DKG is changing, as we all know from International 2018. Moving forward we will have some difficult questions and challenges. With a team of passionate leaders, looking within and looking forward we will face these challenges. It will be our commitment and focus guiding Pennsylvania State. I would be honored to lead this group of leaders and encourage all sisters to share their skills and talents for the 2019-2021 biennium."*

(see Nominees on page 18)



# Convention Schedule At-A-Glance

## Friday, June 14, 2019 - Casual Dress

- 4:00 p.m. Check into the Nittany Lion Inn  
1-7 p.m. Registration - **Rotunda**  
Chapter Presidents sign in  
State Store Sale - **Atrium**  
Basket Sale - **Atrium**  
3-5 p.m. Wine Tasting - Pre-registration is required  
5-6:30 p.m. Choir Rehearsals - **Mt. Nittany**  
7-7:45 p.m. Album of Distinction  
presentation of the 2019  
candidates - **Ballroom C**  
7:45-8:15 p.m. Reception for the 2019 Album  
of Distinction recipients -  
**Ballroom DC**  
8:15-9:30 p.m. Friday Night Fling - **Ballroom CDE**

## Saturday, June 15, 2019 - Business Casual

- 6:45-7:45 a.m. Ticketed Continental Breakfast -  
**Alumni Lobby**  
7-7:45 a.m. First Timers Breakfast - **Alumni**  
**Lounge**  
7-8 a.m. Focus Table set up and sales - **Atrium**  
7:15-7:45 Chorus Rehearsal - **Mt. Nittany**  
7:45-11:45 Registration - Rotunda  
Raffle Ticket and State Store Sale -  
**Atrium**  
8 a.m. Presentation of Flags  
Procession of officers  
Executive Board Meeting - **Ballroom**  
First General Session and  
Keynote Speaker  
Focus table sales - time permitting after  
General session.

## 10:30-11:30 a.m. Workshop Session I

- 11:30-12 p.m. Focus table sales  
11:45 a.m. Doors open for Celebration Luncheon  
Ticketed luncheon - **Alumni Ballroom**  
Recognition of Birthday Chapters and  
40+ years in DKG  
Recognition of women earning  
Doctorate Degrees  
Communication Awards  
Nancy Grove Visionary Award

## 2:15- 3:15 p.m. - Workshop Session II

- 3:15-4 p.m. Focus Table Sales

- 3:20 p.m. Procession Rehearsal for Past State Presidents,  
State Officers, and Special Guests and  
Ecorts - **Alumni Ballroom**  
3:40 p.m. Chapter Presidents rehearsal - **Alumni**  
**Ballroom**  
4 p.m. Focus Tables taken down  
4 p.m. Catholic Mass at Pasquarelli Spiritual  
Center  
4:45 p.m. Raffle drawing - **Rotunda**  
(winners need not be present)  
5:45 p.m. Photo of Officers and Guests - **Alumni**  
**Lobby**  
5-6:15 p.m. Cash Bar - **Atrium**  
6:00 p.m. Presidents' Banquet - **Alumni Ballroom**  
Ticketed seating, presentation of Chapter  
Presidents  
Guest Speaker  
Musical presentation by Convention Chorus  
Announcement of the 2019 State  
Achievement Award  
Installation of 2019-2021 State Officers  
Singing of the Delta Kappa Gamma Song  
Receiving Line for 2019-2021 State  
Officers, International Keynote  
Speaker, and Banquet Guest Speaker -  
**Atrium**

## Sunday, June 16, 2019 - Traveling Clothes

- 8 a.m. Celebration of Life-Assembly  
9 a.m. Honors Breakfast - **Alumni Ballroom**,  
ticketed seating  
Presentation of Scholarships, Enrichment  
Grants  
Chapter Attendance Awards  
Voting on the Budget  
Retiring of the Flags  
Check out of the NLI  
Safe travels  
11 a.m. Administrative Board Meeting - **Alumni**  
**Lounge**, 2017-2019 & 2019-2021  
State Officers and Committee



**Evaluations** are important.  
Before you leave on Sunday,  
please turn in your evaluations or  
go to the state web site and fill out  
an online evaluation.

(Nominees from page 16)

## Nominee for First Vice President: Royce Boyd *Alpha Beta*



Royce Boyd retired in 2017 after 35 years in education and from the position of superintendent in the Claysburg-Kimmel School District and is currently the PSO 2nd Vice President.

At the chapter level, Royce has served as president, 1st and 2nd vice presidents, finance and scholarship chairs, and on the US Forum committee. She is presently the Alpha Beta Bits newsletter worker. Along with other members of her chapter, she helped with the basket raffle at State Convention.

As a member of our State Or-

ganization, Royce has served as State Parliamentarian and as a member of the finance and leadership development committees. She has helped at the registration table and as a volunteer for Artist Alley at State Convention.

Royce was the 2011 Northeast Regional Conference Coordinator in Hershey and has attended every Regional Conference since 2001. She served as Chair of the Time Keeper Committee at the 2016 International Convention in Nashville, as a member of the Time Keeper Committee at the 2010 International Convention in Spokane, and has attended every International Convention since 2006.

When asked for her vision for our State Organization, she re-

sponded: *"My vision for the Pennsylvania State Organization is to help the organization evolve from what is perceived as a sorority to a professional organization for women educators. As the International Organization moves forward in this direction, so must the State Organization. This will take all the PA State members to be open and willing to change. We are experiencing a transition time in the organization that is not very different from the original reasons Delta Kappa Gamma was founded in 1929. First Vice President is the natural progression in the leadership model for me. I have enjoyed the 2nd Vice President position, but it is time to experience another position and its responsibilities within the State Organization."*

## Nominee for 2nd Vice President: Dr. Marjorie Paradise, *Chi*



A member of Chi Chapter, Dr. Marj Paradise is a school psychologist and adjunct professor. She has served her chapter as newsletter editor, second vice president, first vice president, induction committee chair, and president.

At the state level, Dr. Paradise has served on the EEC committee as the State Projects Chair and as the Album of Distinction Chair.

She has sung in the chorus at state convention, has served on the scholarship committee, and has

been a recipient of the Robling-Spitzer Scholarship. Marj has attended the state Purposeful Seminars in Pittsburgh and Valley Forge, and she was on the planning

committee for the Purposeful Seminar in Lancaster. She is scheduled to present a workshop on grief at the 2019 State Convention.

She has attended the International Conventions held in New York City, Indianapolis, and Nashville, as well as the Northeast Regional Conference in Windsor, Ontario.

Professionally, Dr. Paradise is a trainer, public speaker, and Executive Board member of G.O.A.L.

Project (Addictions Leadership). She is a past executive board member of the Mental Health Association of Lancaster County, GRASP facilitator (Grief Recovery after Substance Passing) at Hospice, and past chapter president and State Chaplain of Pennsylvania Women of Today.

Dr. Paradise's vision for the position of Second Vice President: *"Membership is key to the foundation of the Pennsylvania State Organization. Recruitment is vital but must be paired with mentorship. Respect for all members must exist. Sisters who have many years of membership bring wisdom and tradition, while newer members bring knowledge*

*(see Paradise page 19)*

*of contemporary needs of potential members. Both are equally important for our state organization to survive and thrive. In this position, I will be invested with all levels of membership to encourage those less active to become more engaged, and those with experience to come along side of newer members. I truly value the Membership Recruitment Program piloted by Dr. Lyn Schmid, and I believe it could be utilized by more chapters than are currently using it. I have witnessed the success that it has brought to our chapter. Newly inducted Sisters should be nurtured and supported to ensure their continued commitment and the success of the Pennsylvania State Organization."*

---

## Nominee for Recording Secretary: Kristine Reynolds *Beta Kappa*



Kristine Reynolds has been an active member of Beta Kappa Chapter since 2009 and has served as second and first vice president, president, and treasurer. She is presently the State Corresponding Secretary and past Communications Chair. Both roles provided her with the skills to serve as Recording Secretary. Active in DKG State, she has attended 8 state conventions and presented at the Leadership and Professional Seminars. Kristine is a seventh grade Language Arts teacher where she began her teaching career in Maryland in 1995-2004. She moved to her present position at Fairfield Area School District in 2004. She received the Shippensburg University

Outstanding Teacher Award for her school district in 2008 and is very active in her district. Kristine has, and continues to pursue her passion for our Society, Delta Kappa Gamma. Her experience in communication, technology skills and language arts gives Kristine the background and ability to fulfill the post of Recording Secretary. She states, "I am a taskmaster and am attentive and extremely organized which are important skills for a secretary." These roles have allowed her to ignite her passion in the seven purposes of Delta Kappa Gamma. ***"My vision for DKG is for this PASSION to increase at all levels of the society in order for each and every key woman educator to embrace her membership, grow in her professionalism, and recognize her worth. In serving as Recording Secretary, along with my PASSION for DKG continuously growing through the communication and interaction with other members, I will also have opportunities to encourage my sisters to share their PASSION for the society in many ways."***

---

## Nominee for Corresponding Secretary: Marcia Erickson, *Beta Epsilon*



In the Beta Epsilon Chapter Marcia has served as recording secretary, first vice president, president, webmaster, and currently holds the position of second vice president. Marcia also serves on two Pennsylvania State committees. She has been a presenter at Alpha Alpha State, Northeast

Regional, and International Conventions. Additionally, she has served at the international level by being active in DKG Next. As a member of DKG

Next, she collaborated with a team to brainstorm ideas to move the vision of DKG forward.

In addition to receiving many professional scholarships, grants, and awards, Marcia has been the recipient of the Pennsylvania State

Organization Enrichment Grant, Nancy Grove Visionary Fund Grant, and the DKG Lucile Cornet Individual Professional Development Award.

Marcia currently teaches World History, Introductory Mythology, Introductory Journalism, and is a Library Assistant at Hollidaysburg Area Junior High School.

Marcia's Statement for Nomination: ***"DKG's mission, vision, and purposes are transformative. I credit the women of DKG for contributing to my personal and***

(see Erickson page 20)



(Erickson from page 19)

*professional growth since my 2008 initiation. I have been gifted by a special group of women who have encouraged me, supported me, and inspired me. As a result, I would like to become more knowledgeable about the organization and more engaged at the state level in order to contribute to the Society's sustainability. By serving as a state officer, it is my hope to "pay it forward" by empowering and celebrating others' achievements in addition to encouraging members to take advantage of the opportunities and relationships that active engagement provides."*

## Nominee for the Finance Committee: Barbara Emmer Psi

Barb Emmer, Psi Chapter, has been actively involved in DKG for over 25 years, most recently as the local steward of one of Psi Chapter's Little Free Libraries and as Psi's external public relations chair. On the state level, Barb



chaired the Historical Records Committee for several biennia, served two terms on the Scholarship Committee, received a Woman of Distinction Award, and co-chaired the 50<sup>th</sup> Anniversary Celebration. Professionally, Barb was a school librarian in Ridgway and Brockway; an academic librarian, serving as Director of the

DuBois Campus Library of Penn State University; and as a public librarian in her retirement years. Currently, she is the genealogist of the local historical society.

Nominee's Statement:

*"I have served on and chaired Psi's Finance Committee for quite a few years. This experience has helped me to see the breadth and depth of functioning committees. Financial support is key to growth and productivity."*

## Nominee for the Finance Committee: Ruth Olson Alpha Zeta

In Alpha Zeta Chapter, Ruth Olson has served on several committees, has been 1st vice president, 2nd vice president, and is currently president of the chapter. Ruth has attended several Alpha Alpha State Conventions, traveled to Windsor, Ontario, for



the 2017 Northeast Regional Conference, and attended the Pennsylvania State Creative Arts Retreat. Ruth is retired from the Troy Area School District where she taught senior high school math for 34 years including a year when she participated in the Fulbright Exchange Program as an Exchange Teacher in Northern

Ireland. She has been treasurer of her church since 2003.

Ruth Olson's Statement for Nomination: *"Having served on numerous financial committees throughout my life, I feel I have the necessary qualifications to assist the financial committee of Delta Kappa Gamma. Being retired from public education, I have the time to devote to this position. I'd like to help promote wise decision making with the finances of the Society."*

(Weber from page 21)

*challenges and how these challenges can benefit the growth of our state. Chapter membership is the lifeblood of our Society. It is crucial that our leaders look to expand the awareness of our Society, encourage membership attendance beyond the chapter meeting, and provide opportunities to participate and grow in DKG. It would be an honor to serve in identifying and encouraging potential leaders for the future of the Pennsylvania State Organization and Delta Kappa Gamma."*



## Nominee for the Nominations Committee: Clare Flynn *Alpha Kappa*

Clare Flynn, a retired elementary teacher with the Mifflin County School District, has been a member of Alpha Kappa Chapter since 1992. She has served as her chapter's president for three biennia.



At the state level, Clare has served on the Nominations Committee since 2014, been a state convention attendee for 15 years, and attended several Creative Arts Retreats and Purposeful Seminars. She has also attend CTAUN and the National Legislative Forum twice.

In her community Clare is a

member of the South Central Citizen Review Panel of Children and Youth, a member of the Community Support System of Mifflin County, and a volunteer in mental health programs.

Clare's nomination statement: *"As a member of the Nominations Committee for the Pennsylvania State Organization, I am interested in finding the best candidates to fill the positions of offices for the continuation and success of our State Missions and therefore work to strengthen our*

## Nominee for the Nominations Committee: Amy Miehle *Gamma*

A third grade teacher in the Erie Public School System, Amy Miehle has served Gamma Chapter as both president and vice president. At the state level she has been a member of the Membership and Educational Excellence Committees.

Amy is a very active member of



the Girl Scouts and Junior Achievement of Western PA.

Amy's vision statement: *"I believe that our Pennsylvania State Organization needs women of vision, who are willing to immerse*

*themselves in the purposes of DKG, both to enrich themselves and others around them. I would like to see more of our members become active not just in their local chapters, but on the state, regional, and international levels. I would also like to see our over-*

*all membership increase...not just in numbers, but with members who truly believe in the organization and what we stand for, and who are willing to take an active role. This starts with a strong leadership team at the top, women who we are proud to call sisters, who encourage and fuel us with a desire to share their vision. As a member of the Nominations Committee, it would be my responsibility to find, vet, and promote such women to these positions. It would truly be an honor to serve the state in this capacity."*

## Nominee for the Nominations Committee: Haddie Weber *Alpha Phi*

Haddie Weber, a music educator for 38 years, is now retired and is a private music instructor. She



was initiated into Alpha Phi Chapter in 1984. She has served her chapter as parliamentarian, president, first vice president, and recording secretary.

At the state level, she has served as Chair of the Music, Communications, Projects, and World Fellowship Committees. She has served as State

Recording Secretary and has been a member of the Historical Records, Membership, and World Fellowship Committees. Haddie has been recognized as a Woman of Distinction and in 2011 received the State Achievement Award.

Nominee's Statement: *"Our leaders are the future of our State Organization, and they must be aware of global*

*(see Weber page 20)*

## New Initiates

**Beta**  
Marcy Donatelli

**Gamma**  
Kathy Perkins

**Delta**  
Rose Ann DeCesare

**Theta**  
Tammy Schmidt

**Lambda**  
Ellen Campbell  
Olivia Wissinger (colle-  
giate member)

**Phi**  
June Horton  
Donna O'Neill

**Chi**  
Shannon Madara,  
Linda McDowell

**Omega**  
Justine Sieg  
Kristi Teal

**Alpha Gamma**  
Shelly McPherson  
Kimberly Turner

**Alpha Delta**  
Beth Ware

**Alpha Epsilon**  
Norma Koehler

**Alpha Mu**  
Amy Eaton  
Susan Loutzenhiser  
Jennifer Madigan

**Alpha Phi**  
Mary Ann Busdosh

**Alpha Nu**  
Marge Ayoub  
June Bischoff  
Pamela Ottenheimer  
Lynn Vitali  
Jana VanBuskirk

**Beta Alpha**  
Karen Portale  
Ronna Scheier

**Beta Iota**  
Gilda Early  
Stacy Petersheim  
Coral Witmer

**Beta Omicron**  
Jan Michener


**Beta Pi**  
Nancy Brown  
Mary Beth Humbert  
Georgia Ruser  
Alison Troy  
Marianne Wohar  
**Beta Rho**  
Leslie Gossage  
Sarah Richard

**Alpha Rho**  
Jennifer Bale  
Sarah Bozinko  
Kristen Evans  
Kristen Kaminski,  
Ashley Keating  
Lynne Kosak  
Stacy Mullen



## Enrichment Excursions

### Capturing Scenic Maine in Watercolor Cindy G. Reynolds Beta Rho

Unusually shaped lighthouses, sharp rocks with crevices, buoys bouncing atop waves, **seagulls** float-  
ing above the landscape, demonstrations to hone skills, limited technology, and an abundance of seafood were just a part of my watercolor work-  
shop experience in Owls Head, Maine.

Excited anticipation of a week of water-  
color painting accompanied me on my car trip. The ferry from Port Clyde delivered me to Monhegan Island with a population of sixty-  
nine where the scenic view was breathtaking as was the brilliant colors of the flowers and the ob-

scure angles of the rooftops. I took this side trip on my own.

Arriving back on the mainland, the **six of us** gathered for a get-acquainted dinner. Each of the five days began at a different scenic location with a demon-  
stration focusing on color mixing, applica-  
tion, technique and just being there im-  
mersed in the atmos-  
phere. The rest of the day we painted on lo-  
cation or in the studio, captured the wealth of photographic opportu-  
nities and ended with a group critique all with the helpful guidance of our instructors. I developed my reference pho-  
tos daily and put them right into an album.

While I generally paint from photographs, working on location forced me to capture sites in sketches rather than focusing on finished

(see Maine page 23)





(Maine from page 22)



**Sketching Port Clyde Lighthouse**

paintings. Doing quick **sketches** to record the scenes and changes improved my drawing skills and speed. I learned to utilize several new triads of primary colors to mix many colors.

We spent the only day it rained in the Farnsworth Museum which houses an inspiring gallery of Andrew Wyeth's sketchbooks and paintings.



A favorite site was Lobster Lane. The variety of colors and shapes of the buoys hanging on the side of the **lobster shack** caught my eye and became a perfect reference for a painting completed on location.

When I returned home, I did another painting of the shack turned into a winter scene and used it for this year's **Christmas card**.



A delicious lobster dinner was shared on our last night. Besides gaining so many new approaches to use on my own and to share in the painting classes I teach, the experience afforded me several additional opportunities: an



**Studio Painting**

exhibit "Seasonal Sentiments" of my original paintings for my Christmas cards; an evening Meet the Artist Talk "Let Your Life Speak" at several art councils, and a future program for my Beta Rho Chapter. I also have applied to present a workshop at state convention.

There are no words to express how appreciative I am for the gift of this learning experience the Alpha Alpha State PA Scholarship Committee has given me.



**View of Lobster Harbor**

## **Celebrating the Christmas Season in Spanish St. Augustine**

### **Deborah Ceraso**

### **Alpha Theta**

*"The world is a book and those who do not travel read only one page." St. Augustine*

How appropriate that sharing his philosophy has led me to the city named after this saint! I was able to explore over 20 historical sites that have been on my bucket list forever. An added perk was that the Old Town Trolley made a daily stop at my motel out on Anastasia Island, allowing me to enjoy morning and evening walks on the beach.

On the first day, I headed to Old St. Johns County Jail to learn about the horrible conditions the inmates

endured. Many prisoners did not survive in such an inhumane environment. I continued on to the Oldest Store Museum, where actors portrayed friendly clerks, butchers and snake oil salesman who demonstrated the very latest inventions for turn of the century living. Next was the St. Augustine History Museum, where I learned about the Crackers, the Minorcans, and a material called coquina - a form of limestone made of sea shells used to build many of the historical sites throughout the city. I moved on to the Old Drug Store where I enjoyed seeing so many products from my childhood, not to mention the century old medicines and antiques. Following a guided walk through the Tolomato Cemetery, I headed to The Oldest Wooden School House Museum and Gardens - "An American Landmark." The School House is an original 1700's colonial (see St. Augustine page 24)

**(St. Augustine from page 23)**

structure made of cedar and cypress. The animated characters, portraying the professor and his students, recreated school life from the old days. The treatment of both teacher and students alike would certainly not be tolerated today. For example, unruly students were placed in a dungeon for punishment, and slow learners were forced to wear a dunce cap!

Continuing down the historic walking mall known as St. George Street, I took several guided tours through the Rodrigo-Avero-Sanchez House (1760) and the Historic Pena-Peck House (1750), the Plaza de la Constitucion, the Government House, and the Cathedral Basilica of St. Augustine. The highlight of the evening was the Night Christmas Light Up Trolley Tour. Over 1 million Christmas lights sparkled as the trolley took me through the city while Christmas carols filled the air, with everyone singing. The 3-D glasses provided turned the lights into snowflakes, stars and reindeer. At the end of the ride, we were met by Santa's elves, who provided everyone with hot cider and sugar cookies - the perfect ending to a wonderful day!

The second day, my entire morning was spent at the **Castillo de San Marcos**, learning of the resiliency of the city by its ability to remain free after several attempts to be overthrown. Built between 1672 and 1695, the coquina fort replaced a series of wooden forts that had protected the city for over 100 years. Continuing on through the Colonial Quarter, I toured the San Sebastian Winery and St. Augustine Distillery.



Day 3 was very full! The former Alcazar Hotel is now the **Lightner Museum** and houses a very interesting collection of oddities and treasures. Mr. Lightner was quite the collector. Items ranged from the beautiful to the bizarre! Next, I moved across the street to Flagler College. Named after Henry Flagler, the founder of Standard Oil and the Florida East Coast Railway, the college is partially housed in the former Ponce de Leon Hotel with Tiffany chandelier-clad rooms and gold ceilings. The elaborate Christmas decorations certainly added to the ambiance. After the college tour, I walked to the Flagler Memorial Presbyterian Church to see the Flagler mausoleum. Afterwards, I toured the Grace United Methodist Church and the Ancient City Baptist Church.

Day 4 led me to the Spanish Military Hospital and the Ximenez-Fatio House. What I loved the most about St. Augustine is that every single place one visits ensures that you are given historical information. Even the public restroom stall doors have history lessons posted on the inside so that you are learning a bit of history no matter where you go - literally!! Walking to the famous Lion's Drawbridge, made of Carrara marble, I enjoyed watching the cruise ships and the sailboats while dining al fresco.

My final day of touring was definitely the most inspiring. The first stop was the Mission of Nombre de Dios. On this site on September 8, 1565, Pedro Menendez de Aviles landed with a band of settlers to found St. Augustine - the first permanent Christian settlement in the United States. The first mass was offered here in the nation's first parish/mission. The



docent was from Erie, Pa., and he was very excited to share his wealth of knowledge with a fellow Pennsylvanian...so I really received the VIP treatment! Next to the Mission is the Shrine of Our Lady of La Leche. Established in 1620, it is the first shrine ever to be dedicated to the Blessed Mother in the U.S. I happened to be there on a holy day - the feast of the Immaculate Conception, which made walking on the grounds of the sacred acre all the more meaningful and spiritual for me. It is truly a holy place. Examining the relics inside the mission, (including the casket of Pedro Menendez himself) really made history come alive! Last, but most certainly not least, was my tour of the Fountain of Youth Archaeology Park. People have lived on this site for over 3,000 years! After viewing programs in both the planetarium and the theater, I wandered around the grounds, taking in the original mission church, the lookout tower, and the canons. Walking through the Menendez settlement field alongside the free-roaming peacocks, the history of Juan Ponce de Leon unfolded. Even though drinking from the **Fountain of Youth** did not live up to its promise (as my mirror clearly shows), it was none-the-less an amazing day.



It was such a gift to be able to experience the history of St. Augustine that I had shared with my Spanish students over the years, but never had the opportunity to experience myself. Traveling here during the Christmas season made it all the more magical! I am most grateful to DKG and the Enrichment Grant Committee for allowing me to add another page to my world travel book!



# The Desert Southwest

## Marcie Erickson

### Beta Epsilon

To develop engaging teaching materials and to acquire firsthand knowledge of the Ancestral People of the Sonoran Desert, the Ancestral Puebloans, and the Sinagua, I applied for a 2018 Enrichment Grant. The educational travel experience fulfilled the sixth purpose of DKG, “To stimulate the personal and professional growth of members and to encourage their participation in appropriate programs of action.”

The experience also allowed me to model curiosity and wonderment to my students by exploring an unfamiliar physical region using an online medium to reflect and publish (<https://sites.google.com/view/2018-pso-enrich-grant-desertsw>), and creating a hands-on classroom travel trunk with complementary learning activities.

In August, I embarked on a trip to the Desert Southwest Region of the United States. Most of my travels were in Arizona, but I also visited Colorado, New Mexico, and Utah. I wanted to visit this area because a new unit on the Americas was recently added to my seventh grade world history curriculum, and although I had previously taught Mesoamerica, it would be the first time that I would be teaching about the ancestral peoples of the Desert Southwest.

The experience immersed me in the region’s history and culture, thereby, allowing me to acquire a deeper understand-

ing of its time line and people. This firsthand knowledge will transform my pedagogical approach in addition to a Desert Southwest Travel Trunk that I created. The trunk contains educational activities and games, postcards, maps, books, and artifacts that will increase student interest and engagement.

After landing in Phoenix Sky Harbor International Airport on August 1st, the first site visited was **Casa Grande Ruins**



National Monument in Coolidge, Arizona. Named by early

Spanish explorers, Casa Grande, or Great House, is the largest known structure of the Ancestral People of the Sonoran Desert. Its purpose is unknown, but its walls face the four cardinal points of a compass and several of its circular openings align with astronomical events. It was abandoned c. 1450 CE.

On August 2<sup>nd</sup>, I visited the Painted Rock Petroglyph Site in Gila Bend, Arizona. The word petroglyph is formed from two Greek words: *petro*, meaning rock, and *glyph*, meaning engraving. The images are thought to be predominantly from the Hohokam cultural era, c. 300 CE - 1400 CE, and the petroglyphs were pecked, or etched, into the basalt boulders.

Afterwards, I visited The Pueblo Grande Museum and Archaeological Park in Phoenix. It is a National Historic Landmark. It features indoor galleries and exhibits from the Hohokam culture, and the outdoor interpretive

trail features a ballcourt, pithouses, a replica adobe compound, and a replica platform mound.

The next day, I traveled to Monument Valley. It spans both Arizona and Utah, and the Navajo Nation Parks and Recreation manage it. It is one of the most iconic sites of the Desert Southwest. Towering sandstone buttes and vast panoramic views enthrall visitors. Afterwards, a quick stopover was made at the Four Corners Monument, also managed by the Navajo Nation. It is the only quadripoint in the United States. Arizona, New Mexico, Utah, and Colorado meet at a distinctive brass marker.

August 4<sup>th</sup> entailed an all-day visit to **Mesa Verde**



National Park, Mesa Verde, Colorado. Classified as a World Heritage Site, Mesa Verde was the home of the Ancestral Puebloans and their descendants for approximately 700 years. Visitors can tour cliff dwellings such as Balcony House, Cliff Palace, and Spruce Tree House in addition to mesa top sites to learn more about the Ancestral Puebloans and their departure around 1300 CE.

The following day both **Canyons of the Ancients**



(see Desert page 26)

(Desert from page 25)

National Monument, Cortez, Colorado, and Chaco Culture National Historic Park, Nageezi, New Mexico, were on the itinerary. The U.S. Department of the Interior's Bureau of Land Management manages canyons of the Ancients, and highlights both developed pueblos and ceremonial chambers, or kivas, in addition to back-country sites of the Ancestral Puebloans.

**Chaco Culture** is a certified International Dark



Sky Park, and it is classified as a World Heritage Site. It features a myriad of Ancestral Puebloans buildings that occupied the canyon between 850 CE and 1250 CE. The multi-story great houses possessed hundreds of rooms. Many were oriented with the cardinal directions on a compass and built with astronomy markers.

August 6<sup>th</sup> was a full day, and it included visiting Aztec Ruins National Monument, Aztec, New Mexico; Canyon de Chelly National Monument, Chinle, Arizona; Hubbell Trading National Historic Site, Ganado, Arizona; and the adjoining Painted Desert and Petrified Forest National Park, Arizona.

Touring Grand Canyon National Park was the highlight of August 7<sup>th</sup>, and on August 8<sup>th</sup>, the trip's final two sites, Montezuma Castle National Monument, Camp Verde, Arizona, and Tuzigoot National Monument, Clarkdale, Arizona, were explored. The Southern Sinagua between 1100 CE - 1425 CE and 1100 CE - 1400 CE, respectively, occupied both sites.

I am deeply appreciative of the opportunity that the enrichment grant provided, and I express my sincerest gratitude to the Pennsylvania State Organization of the DKG. Thank you.

## THEY PERSISTED: Amelia Earhart and Sally Ride Liz Brewer

### Sigma Chapter

When I decided to do my research at the Library of Congress (LOC) about Amelia Earhart and Sally Ride, I had a vision of what I wanted to accomplish. Little did I realize what a profound affect it would have on me!

How do I get a Reader's Card? How do I get to the

**Main Reading Room**

**at the Jefferson Building** at the Library of Congress? How do I get the books I

need for my research? How do I navigate the tunnel system that connects the 3



buildings of the LOC?

These are just a few questions that I had when I went to Washington, DC, to do research on Amelia Earhart and Sally Ride, trailblazers in aviation and space. My grant provided me with the opportunity to continue my research on women who paved the way for females in STEM careers with the goal of augmenting Purposes 2 and 5 of our Society for the DKG-Girl Scout Curriculum.

When I arrived at the Jefferson Building and viewed the Main Reading Room from the Gallery, I was overwhelmed to think I was going to study down there! For three days I was greeted by the librarians who helped me through the "learning curve."

**I was able to pour through scores of books** and find materials that

will be used in developing activities that our Sisters, Scout leaders and others will be able to use to help young girls learn more about these pioneers. My plan is to share this program at a future workshop session or on our website.

In Hilary Clinton's book, *She Persisted: 13 Women Who Changed the World*, Sally Ride is quoted to have said, "Young girls need to see role models in whatever careers they may choose, just so they can picture themselves in doing those jobs someday."

And we must echo Amelia's Earhart's mantra, "You can do anything you decide to do!" They persisted and so must we!

I am grateful for these experiences and I am ready to share my findings with PA DKG.





# Chapter News

## Theta, Upsilon, Alpha Phi, Alpha Upsilon, Alpha Xi

On November 17, Theta, Upsilon, Alpha Phi, Alpha Upsilon, and Alpha Xi honored PA State President Barbara Gasperini with a reception at DeNunzio's in Monroeville. President Barbara shared her journey visiting chapters and admired the extraordinary work our wonderful ladies have done as DKG members through many chapter projects.

Her project, Girl Scouts of America, was selected as an organization that encourages strong leadership skills. Jenn McKay of Alpha Upsilon, shared her experiences as a Girl Scout and how the leadership skills have influenced

her personal and professional life. At culmination of the program the ladies were asked to recite a DKG version of the scouting oath.

*"On my honor, I will try,  
to serve God and my country,  
to help people at all times,  
to live by the Girl Scout law,  
to encourage women educators,  
to promote professional and  
personal growth for woman  
worldwide."*

At the conclusion of Jenn's program, Barbara asked for a show of hands as to how many women were former Girl Scouts. To our surprise the majority of women confirmed that the leader-

ship skills obtained in scouting contributed to our key women educators.

Barbara was presented with a lovely **crystal pitcher** filled with money and red paper roses.

Fellowship is an integral part of maintaining healthy chapters. Socializing with **DKG sisters** restores and revitalizes our spirits. We felt the multichapter meeting was a huge success due in part to the great attendance.



## Zeta

Zeta Chapter wanted another means of getting the Zeta name and the Delta Kappa Gamma name into the community while performing a service to the community. Therefore, the executive committee decided to ask a member to create a wreath for the Beaver County Christmas Extravaganza. In the past this was called the Festival of Trees however, it has expanded beyond trees to include wreaths, raffle baskets, food, crafts and miniature train displays. The proceeds from the festival support the Beaver County Children and Youth Services Advisory Board in helps provide scholarships, coats, shoes, summer camps, and additional support for children under the care of the Chil-

dren and Youth Services Agency of Beaver County. The proceeds also support the volunteer effort of the U.S. SARR Corps in the finding of missing children and adults and to return them home safely. Both organizations provide caring support for children and adults in our community.

The Zeta wreath was one of the first wreath sold and was the only one of its kind. It netted a profit of \$75 for these worthy charities. The maker of the wreath was Zeta President, Kim Inman. This wreath was titled, **"The Believing Elf."**



## Chi, Sigma, Alpha Epsilon, Alpha Phi

DKG Sisters met at the PA School Counselors Association annual conference in November, 2018, in Hershey.



Left to right- Brenda Walker (Chi), Liz Brewer (Sigma), Diane Smith (Alpha Epsilon) and Dr. Judy Bookhamer Alpha Phi. Missing is Peggy Woods (Chi) (The 4 pictured here are also past presidents of PSEA)

## Alpha Kappa

Sisters belonging to the Alpha Kappa Chapter (comprised of ladies from Mifflin and Juniata Counties) met at a local restaurant for a delightful Christmas meeting filled with lots of fun, good food, and wonderful entertainment! A very special guest, **Mrs. Claus** (a.k.a. Molly Kinney, First Vice President of the chapter) welcomed everyone and had a photo opportunity with each attendee to express their inner holiday spirit with her. A member of the chapter voluntarily brings a raffle item or basket to each meeting to raise funds for our annual scholarship fund. The fund provides a graduating senior pursuing a teaching degree from both counties with a scholarship upon completion of her first year of college. The group was also entertained by **The Boyz**, a local men's singing group who kept us all smiling and singing along to familiar Christmas tunes.



**Bonnie Seigler, corresponding secretary, Mrs. Claus (Molly Kinney), Shirley Covert, program/project chair**

**The Boyz**



## Alpha Omicron

### Hope for the Holidays

The Alpha Omicron Chapter of Delta Kappa Gamma met on December 4th at Perkins Restaurant in New Castle for their annual Christmas breakfast and gift exchange. Throughout the year the members of Delta Kappa Gamma collected items, as well as, monetary donations to benefit the City Rescue Mission's Women's Christian Ministry at Hope Place. Hope Place is a shelter where women receive spiritual counseling, and assistance getting housing and jobs opportunities. Personal and spiritual growth are the focal points while women stay at the shelter.

Karen Jameson, Director of Hope Place was invited as a guest by President, Karin Kosior, to receive the donated items along with a check for



\$300.00. The shelter depends on donations and Director Jameson expressed her gratitude to the chapter for their generosity and kindness.

Delta Kappa Gamma is an International Organization that honors **Key Women Educators** for their commitment and dedication to promoting educational excellence. Members of the chapter are retired and active educators from Mercer and Lawrence counties. The organization provides fellowship, encourages personal and professional growth, endows scholarships for graduate studies or enrichment activities, and supports legislation in the interest of education and women educators. For more information on the society women educators can contact Linda Morrison, Membership Chair and Second Vice President, at [morilibrary@aol.com](mailto:morilibrary@aol.com).

## Lambda

Lambda met at Grove City County Club for our Christmas Brunch. The highlight of the morning was welcoming 2 new sisters to our chapter: Ellen Campbell, retired Kindergarten teacher, and Olivia Wissinger, Clarion University Education major. We believe our chapter holds the record for the

**First Collegiate Member** in Pennsylvania! **Olivia and Ellen are pictured with Melanie Ritenour, 2nd Vice President.** Lambda sisters enjoyed a wonderful brunch, a wonderful meeting fellowship, a wonderful moment welcoming 2 new sisters, and a wonderful raffle. It was a most wonderful time!





## Beta Phi

Beta Pi had a very eventful fall/winter season! In November, we welcomed five new members at our **2018 Fall Induction** dinner! We would like to



give a warm welcome to *Nancy Brown, Mary Beth Humbert, Georgia Ruser, Allison Troy, and Marianne Wohar*. Towards the end of the month, Beta Pi held our **Norristown Ministries Shoebox**



**Project.** Members worked together to create 125 holiday shoeboxes filled with hats, socks, scarves, gloves, toiletries, and

snacks for the Norristown Ministries Hospitality Center. The shoeboxes were given out to less fortunate members of the community on Christmas Day.

In December, Beta Pi enjoyed a festive trip to the **Chestnut Hill Holiday House**



**Tour!** Members met at the Woodmere Art Museum in Chestnut Hill and traveled by trolley to tour five beautiful homes decorated for the holidays just outside of Philadelphia. During the same weekend, Beta Pi donated their time from Friday-Sunday **gift wrapping** at

Barnes and Noble in Devon, PA. Gift wrapping was complimentary, however, we gladly accepted donations to help fund our



community outreach projects and scholarships.

In January, Beta Pi held a dining night fundraiser at California Pizza Kitchen in King of Prussia Mall. Members and their families/friends enjoyed a night out while supporting our wonderful chapter! We ended January with our Winter Breakfast Meeting at Peppers Restaurant in King of Prussia. At our meeting, we held a **food collection** for Upper



Merion Community Cupboard. We also awarded one of our members, Allison Troy, with M.A.D. Money (Member Assistance Dollars). Allison is the first member of our chapter to be awarded with M.A.D. Money and she will be using it to purchase Lakeshore learning centers and games for her classroom!

## Beta Rho

### Watercolor Painting Benefits Chapter

The Beta Rho Chapter recently received a \$400.00 donation for an original watercolor painting. The story began when Jan Winemiller, a talented glass crafter who created the sun catcher for the State "Rose Bud Recognition Award," asked for one of Cindy Reynolds' watercolor paintings for her art collection. Knowing that Cindy does not sell her paintings, she offered to donate \$500.00 to DKG. Cindy agreed and sent Jan her painting "**Kayaking on the Susquehanna.**" Cindy used some of the money to insure and ship the painting and then happily donated the remainder to the chapter.

Cindy is pictured with the painting and Beta Rho President, Jeanette Saulo, receives the check from Cindy at the recent chapter meeting.



## Beta Theta

Beta Theta Chapter implemented the Girl Scout patch project for the first time this past fall. A group of Beta Theta members consisting of Donna Winch, Rosemary Ruhl, Kathy Dunn, Cindy Kerstetter, and President Jeannette Thomas attended the November 1st meeting of the **Junior & Cadette Troop # 10734 of Harrisburg.**



Each activity done at the meeting correlated to one of the purposes of the DKG. The activities included sharing our Mission and Vision Statements and the Girl Scouts reciting their Mission Statement, Girl Scout Promise, and Girl Scout Law. DKG sister Rosemary Ruhl led a discussion of the life of Girl Scout founder, Juliette Gordon Low. Donna Winch portrayed our founder to share Dr. Annie Webb Blanton's biography and the founding of DKG. The girls made posters displaying the founders and facts they learned about them. Kathy Dunn engaged everyone in singing various Girl

Scout songs and told the girls about our DKG songs that we sing at each of our meetings. Kathy also showed samples of the Little Dresses for Africa that our chapter sews and explained the purpose for the project. The girls in the troop are planning to donate pillowcases for our project. Rosemary shared other projects that are done by DKG, not only by our chapter, but also those at the state and international levels.

Our Beta Theta President, Jeannette Thomas, provided information and guidance throughout the Girl Scout project. Our first attempt was deemed a success by all participants!

## Pi

### Philanthropic Support for Educators and Children

Marigold Manor in Elkland, Pa was the setting for the November 11, 2018 meeting of Pi Chapter. Our hostess and owner of the Bed & Breakfast, Bonnie Morgan, shared her home for our meeting and tea, providing a perfect backdrop for an amazing meeting.

Under the leadership of President Deborah Johnson, members have spent several months fundraising for some important causes. At this meeting, members voted to give a total of \$800 to three young women who are or will be doing student teaching assignments this year. Those women are Karissa Burrous from Gaines, Rebekah Colegrove from Liberty, and Kaitlyn Sawyer from Wellsboro, all graduates of high schools in Potter & Tioga Counties.

In addition, Classroom Enrichment Grants were announced, supporting five projects in Potter and Tioga Counties. Grants ranged from \$100 to \$250. Those women receiving awards are Tiffany Getty (*Dewar Flask*) from Wellsboro, Jessica Knowles and Wendy Hamilton (*Where Does Our Food Come From*) from Northern Potter, Jodi Bruce and Ashley

McKee (*Trout in the Classroom*) from Westfield Elementary, Kim Bonham (*Child Development Career Education*) from Cowanesque Valley, and Jeanette Jones (*purchase of furniture for special needs students*) from New Covenant Academy.

Members also provided toys for the upcoming holidays that were presented to the Salvation Army for distribution. Laurie Wood, representative from the Salvation Army thanked the members for their generosity.

Guests and members enjoyed a trumpet solo performed by sixth grader, Jesse Quick and many delicious treats.



**Greta Marie Taft, Committee Member, Jessica Knowles, recipient, Tiffany Getty, recipient, Wendy Hamilton, recipient, Grace Schauer, Project Committee Chair**

## Sigma

Sigma Chapter held its December meeting at the Wynding Brook Golf Club in Milton. **Kevin Mertz**, founder of Father's Hope, spoke to the group about his local nonprofit organization which has provided stuffed animals, other toys, and support for building projects to orphanages in many countries around the world, including the U.S. **In the photo with Kevin Mertz is Doris Mertz, Co-First Vice President and Brittany Bunting-Specht, Co-President of Sigma Chapter.**

At our upcoming March meeting, members plan to donate stuffed animals and money for shipping costs to Father's Hope.





# In Memoriam

**Dr. Nancy Henderson**  
**Fall of 2018**  
**Lambda**

Nancy was a 38 year member of DKG. During those years, she served on many chapter committees and was very active in recruiting new members. Dr. Henderson helped to establish the first kindergarten program in the Lakeview School District where she also taught first grade for many years.

**Dr. Michelle McCollin**  
**Fall of 2018**  
**Alpha Sigma**

Dr. Michelle McCollin passed away after only being a member for one year. However, in that year she introduced her Chapter to [Eyes4Africa, Inc.](#) A program she founded to bring vision resources to the world. In the community, Dr. McCollin was very active in the special education community around the world. She lived her life by her mantra – “live your best life always.”

**Barbara Benson**  
**October 23, 2018**  
**Alpha Sigma**

Barbara Benson was a very active 46 year member. She wrote notes of encouragement and was present at every chapter outreach program. Mrs. Benson was a Home Economics teacher for many years and was active with Relay for Life and the Lawrence County Fair. She was also very active in her church community of Highland Presbyterian Church.

**Cynthia Devonshire**  
**Alpha Zeta**  
**November 22, 2018**

Cindy Devonshire had been a member of DKG for 35 years. She was very active at both the local and state level and served as our State Webmaster for several years. Cindy was a certified elementary teacher originally from Massachusetts. She received her Masters’ in PA. The United Methodist Church of Herrickville is where Cindy served as charge secretary/treasurer. She and her husband wintered in Florida.

**Judith Banas**  
**Alpha Omicron**  
**December 9, 2018**

Judy Banas served her chapter in many leadership roles including president but most recently, the 2018 Parliamentarian. She taught at Sharpsville Elementary for 39.5 years. In the community, Judy helped with Meals on Wheels.

**Embre Judy Thomas**  
**Chi**  
**December 10, 2018**

Embre “Judy” Thomas was born, raised and educated in New York. She also began her teaching career in New York before teaching 30 years for the School District of Lancaster in the music department. In April, Chi honored her for being a forty year member of DKG. She served as president for three terms with true dedication. She was the choral director for many area churches. She was also a proud member of the Lancaster Musical Arts Society. The com-

munity was supported by Embre’s service on the Boards of many civic and community organizations where she received many honors.

**Sandra Hanes**  
**Psi**

**December 30, 2018**

Sandra Hanes taught Spanish in the Ridgeway Area School District for 36 years. While working in Ridgeway, she was and advisor/coach for many extra-curricular activities.

**Mary Ann Zook**  
**Alpha Kappa**

**December 2, 2018.**

Dr. Zook was initiated in 1989. She chaired the music committee for many years for Alpha Kappa. Mary Ann taught music and music education at Hartwick College in Oneonta, NY. After retiring and returning to Mifflintown she taught piano to students of all ages in the local community.

**Dr. Dorothy Hughes**  
**Psi**

**January 21, 2019**

Dorothy had been a member of DKG for 35 years. She served and chaired on many committees while a member. As a graduate of Dubois Area School District, Dorothy went on to Theil College and majored in Sociology. However, after graduation she returned home to Dubois Area School District where she taught first grade for 37 years at Reynoldsville and Sykesville Elementary Schools.



# The Keystonian

The Delta Kappa Gamma Society International - Key Women Educators

The PENNSYLVANIA STATE ORGANIZATION Official Publication

NON-PROFIT ORG.

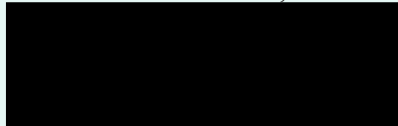
U.S. POSTAGE

**PAID**

CASKEY GROUP

## *The Keystonian*

Bonnie Lee Barnes, Editor



*The Keystonian* is published four times a year by the Pennsylvania State Organization (Alpha Alpha State) of The Delta Kappa Gamma Society International

### Submission deadlines:

Summer Issue - June 1

Fall Issue - August 1

Winter Issue - November 1

Spring Issue - February 1

### Published by:

Caskey Group, LLC  
850 Vogelsong Road  
York, Pennsylvania 17404



INTERNATIONAL SOCIETY FOR KEY WOMEN EDUCATORS

**DELTA KAPPA GAMMA™**

## MISSION STATEMENT

**The Delta Kappa Gamma Society International promotes professional and personal growth of women educators and excellence in education.**

## Chapter Dues Collection Change

The time frame for 2019-2020 chapter dues collection will change to align with International's "fiscal year." Dues will now be collected in the spring.

**All** chapters must submit their dues to the State Treasurer, Wanda Keller, by **June 30, 2019.**



## Think Spring

