



The Keystoneian

The Delta Kappa Gamma Society International - Key Women Educators

Official Publication of Alpha Alpha State PENNSYLVANIA

Barbara Rankin Receives State Achievement Award

By Michelle Sama, Communications Chairman



Those attending the Presidents and Founders' Banquet at the Nittany Lion Inn on June 12 rose to their feet to applaud the selection of Barbara Rankin as this year's 2004 State Achievement Award

honoree. Rankin has been a member of Alpha Xi chapter since 1965. She has served her chapter with love and devotion as an officer and committee chair.

She has also served Alpha Alpha State in
(Continued on page 7.)

Congratulations

to our Alpha Alpha State Sisters who have achieved these honors!

75th Anniversary Recipients

Beth Acri Bowen (Beta Iota) for her project Story Time for Little Guys and Girls.

Louise Garverick (Beta Kappa) for her project Screen Painting: Artist-in-Residency.

Manuscript Publication in *The Delta Kappa Bulletin*

JoAnn Wolinsky's (Tau) manuscript "A Safe Place...Where There Are No Mistakes..." was selected for inclusion in the Spring 2004, Volume 70-3 issue.

OPPORTUNITIES --- at the 2004 State Convention and into the Future of the Society

By Joan Peters, Beta Rho

As 290 members of Alpha Alpha State met at the Nittany Lion Inn, State College, from June 11 - 13 for the annual convention and meetings of the Executive Board, emphasis during this 67th year was on "OPPORTUNITIES," in a unified attempt to accent the seven purposes of the Delta Kappa Gamma Society International and to make our mission statement real. Numerous opportunities during business meetings, workshops, and celebrations gave a special intensity to the theme, "From the Sparkle of the Past to the Brilliance of the Future," since 2004 marks the 75th anniversary of the founding of our beloved Society.

Two important guests --- Dr. Annie Webb Blanton (portrayed by Cindy Reynolds) and Ruby Terrill Lomax (portrayed by Florence Sherwood) --- visited at the convention on Friday and Saturday and sparked renewed interest in and commitment to the vision of the founders of Delta Kappa Gamma.

(Continued on page 6.)

International Convention
See you in Minneapolis!
July 27-31, 2004



INSIDE
The Keystoneian

Program of Work Com.....	4-5
Convention.....	6-9
Album of Distinction.....	8
Legislative Link.....	10
Women in Arts.....	11-13
Chapter News.....	13-15
Area Conferences.....	18
Important Dates.....	18

Alpha Alpha State
Officers 2003-2005

President

Carol Ulrich

First Vice President

Dr. Lyn Schmid

Second Vice President

Carolyn Sutton

Recording Secretary

Haddie Weber

Corresponding Secretary

Louann Shrader

Treasurer

Linda Fisher

Parliamentarian

Jeannette Thomas

Website: deltakappagamma.org/PA

Editor

Terri Stetler



By Carol Ulrich

Alpha Alpha State President's Message



*Alone we can do so little.
Together we can do so much!*

Helen Keller

Summer is here and the living is easy, especially now that state convention is over and a new biennium has begun for Pennsylvania's chapter presidents.

This is also a time to reflect on the past year and plan for new chapter meetings and new involvement on the chapter, state and international level. Consider the following message copied from a recent PENNAEYC UPDATE.

"Xvxn though I havx to usx my old typxwritxr for this articl, it still works vxry wxll - xxcpt for one kxy. You would think that with all the other kxys functioning propxrlly, one kxy not working would hardly bx noticxd, but just onx kxy sxxms to ruin the wholx xffort. You may say to yoursxlf, "Wxll, I'm only onx pxrson. No one will noticx if I don't do my bxst." But it doxs

makx a diffxrxncx bxcausx to bx xffctive an organization nxxds activx participation by vxryonx to the bxst of his or hxr abil-ity. Our Dxlta Kappa Gamma Society nxxds you and this "mxmo" shared by Lou Warrxn Groomxs says it in a way that I hope you'll remember. The ntxt timx you think you arx not important rxmxm-bxr my old typxwritxr—you arx a kxy pxrson in your chaptxr and on the statx and intxrnational lxvxl too.."

Research your chapter's roots. Volunteer to help with a program. Be a presenter for State Convention next year. Attend an area conference. Decide to be part of the Seminar of Purpose and the Creative Arts Retreat. Get actively involved. You are needed. Just like the missing "e" above.

Letter to the editor

February 12, 2004

Dear Terri (Stetler),

Thank you for sending me the editions of *The Keystonean* during this biennium. I always appreciate receiving state newsletters, and yours is one of the best ones. I appreciate your many efforts to publish news that is timely and useful for all your Pennsylvania members. You have done a very good job.

The format of your newsletter makes it easy to read. The detailed state committee reports, reports of state officers, information about state meetings, and chapter news with all the wonderful photos add so much to the publication. I was interested in the variety of activities planned for the Creative Arts Retreat--sounds like a lovely weekend. Keep up the great work!

As chairman of the international Communications Committee I appreciate your devotion to collecting the news, preparing it for print, and sending out the many copies of your newsletter. Maintaining effective communications with all our members is of utmost importance for the continuing success of the Society. Thank you so much for your important work and your many contributions.

Very truly yours,

Alice Carrier

Chairman, International Communications Committee

MEMBERSHIP

WHY DID YOU ACCEPT MEMBERSHIP IN THE DELTA KAPPA GAMMA SOCIETY INTERNATIONAL?

By Dr. Irene Murphy, Expansion Committee

What an honor to receive an invitation to accept membership in an organization described as an educational, honorary, professional organization for women educators! Alpha Alpha State organization officers, with the help of Eta chapter members in York, issued the formal invitation to membership. Two members, outstanding women educators in my area, reviewed the Society Purposes with me and encouraged me to accept the invitation to membership in the Society. An orientation period, prior to the initiation ceremony, provided an overview of the Society history; the Purposes, the structure and areas of activity, the officers, boards and committees, the governing documents, the opportunities and the responsibilities of membership. During this orientation session I met the state officers, members of Eta Chapter, and other women educators who were also to be initiated as charter members of one of the three chapters to be chartered on that day.

May 16, 1962 was an exciting and memorable day, when I accepted the responsibilities of membership with other women educators and became a charter member of Beta Delta chapter of The Delta Kappa Gamma Society International! During the initiation ceremony, we promised to be loyal to the policies and to give support to the implementation of programs of work for the fulfillment of the seven Purposes.

Today, forty-two years later, I would like to share with you **why I became an active involved member. Involved at the chapter level first, next the state level and then the international level. What, in The Delta Kappa Gamma Society International, keeps me actively involved at the three levels, chapter, state, and international?**

Being chosen meant some Delta Kappa Gamma members had faith in me and in my abilities to serve the Society. They believed I was capable of helping to fulfill the Purposes and worthy enough to be a member of this great Society. I believed in the value of the Purposes. I accepted the challenge to serve and to uphold the Purposes as goals and guides for Society activities. I began my association and work with the Society by pledging to support the seven Purposes in a cooperative and unified effort with the other Beta Delta chapter members.

Following the acceptance of membership in the Society I became an active involved member. Advantage was taken

of opportunities to attend and participate in programs, workshops, and other activities provided at state and international conventions, regional conferences, and seminars. Leadership roles were accepted at the three levels of the Society. Working together for the benefit of others and giving needed assistance continue to be rewarding experiences. I continue to be an active involved member, at the three levels of the Society, because of the timely educational programs, the opportunities provided in support of the Society Purposes and Mission Statement, and the caring and sharing members throughout the fourteen countries.

My personal and professional growth has been enlightened, enriched, and empowered by members, at all levels of the Society, through programs, workshops, seminars, and educational community projects for children, and other shared information. Society publications, travel and study experiences, all at the international level, have helped to expand my knowledge and understanding of educational issues studied and evaluated.

Involvement in Society activities has provided me opportunities to receive Delta Kappa Gamma awards. Receiving the International Achievement Award and the Alpha Alpha State Achievement Award were great honors! Other awards received include a Golden Gift Fund Award to attend the Leadership/Management Seminar; and an International Scholarship Award to complete graduate work. An opportunity was also provided to have an article published in The Delta Kappa Gamma Bulletin, a refereed educational journal that promotes professional and personal growth of members through the publication of their writings. Opportunities are provided at all three levels of the Society to learn, share, and exchange ideas and expertise on educational issues through workshops, programs and through personal work with members. Once attending an educational convention or regional conference you will never want to miss another because they stimulate personal growth and service of individual members by encouraging participation in chapter, state, regional and international conferences, workshops, seminars and conventions!

Membership is the heart of every chapter and the key to the Society! My challenge to every chapter member is to honor a key woman educator by inviting her to membership in the Society!

PROGRAM OF WORK

Chapter Program of Work Teams Prepare for the New Biennium

Some Tips to Aid in Your Planning

By Dr. Lyn B. Schmid, Alpha Alpha State Program of Work Chairman

Congratulations on being named to your Chapter's Program of Work Committee for 2004-2006! It is an exciting task to plan the Chapter's Programs and Projects that will actively involve your members and inspire their personal and professional growth. What a dynamic chapter you will have when you successfully execute your new Program of Work Team plan!

The Adult Learner

Knowing how adults learn from programs and participate in projects presented on the chapter level is a vital component in developing and implementing effective activities for the upcoming year. What do we know about adult learning? I invite you to consider what research has indicated to be the characteristics of adult learners:

- 1) They consider themselves independent, so one-size-fits-all approaches to planning for the upcoming biennium will not be as invigorating as making sure that all age and experience groups are considered.
- 2) They have a wide variety of experiences, and utilizing these experiences is a treasure trove of program and project resources.
- 3) Adults are concerned with their immediate problems, so keeping your topics current and meaningful to the three generations of women in your chapter will be critical. Veteran retirees, experienced educators, and young women in the profession will all need programs and projects that address their needs. A key point here

is to connect all programs and projects to members' daily activities in order to make them relevant.

- 4) Adults come to a chapter meeting with their own goals, motivations, needs, and experiences. Your Program of Work Team must consider how to make the activities that all members encounter both meaningful and enriching. The Society's Program Resource Guide provides a survey that could be administered to members for purposes of gathering valuable data in this area.
- 5) People learn by doing! A program or project is more effective if the members are involved.

Cooperative, interactive situations in the group will leave lasting positive impressions with your members.

Does this make you think that your planning will be an impossible task? Never! You are a Key Woman Educator on the Program of Work Team who has been invited to share in the process as a Chairman of a Committee. You were chosen either because of your existing leadership ability or because someone saw that spark of leadership potential beginning to develop in you. Your committee work, as a winning team, will be exceptionally rewarding as you seek to meet the needs of the women in your chapter through stimulating programs and fruitful projects that will fulfill The Seven Purposes of our organization.

Please do not hesitate to call on your State Program of Work Committee counterpart for support. We are ready to assist you and look forward to serving as resources to your team!

PERSONAL GROWTH AND SERVICES

By Barbara Rankin, Committee Member

"Now is the time for all good (wo)men to come to the aid of their party." Anyone who has taken typing in school is familiar with that phrase.

But now that a new biennium is beginning in your chapter, we might say, "Now is the time for all good Delta Kappa Gamma members to come to the aid of their chapter."

There are many ways this can happen, and one source is the Personal Growth and Services Committee.

The chairman of this committee is a member of the Chapter Program Committee and should be involved in seeing that programs are planned that meet the needs of the members. The Professional Affairs Committee has obvious goals, but Personal Growth and Services can address such things: (1) as helping sisters recognize their leadership potentials, (2) encouraging participation in community service, and (3) creating a climate in which women are recognized for their abilities, for their leadership, and for their unique personalities. It is through this committee that members can experience personal growth in social, economic and political areas.

COMMITTEE

Professional Affairs

By Carol Hartley

If you didn't come to the Alpha Alpha State Convention in June, you missed a wonderful opportunity to learn about and honor nineteen Alpha Alpha State members who were added to our annual Album of Distinction: new members, 50-year members, retired teachers and administrators, teachers currently active in their profession, volunteers in churches and numerous organizations in their communities, recognized by their teaching disciplines, WGAL Great Teacher, first woman on a 146-year-old Board of Directors, recognized by PASR chapters and regions, outstanding teachers and alumnae of their almamaters or places of employment, travel awards, recognition for historical research, parade Grand Marshal. (See page 8 for photos and more information.)

Join in the pride of Alpha Alpha State for the contributions made by each of these Album of Distinction women!!!

With a new biennium beginning for local chapters, committee chairmen can access Alpha Alpha State help to understand the focus of their committees. Remember to register for Area Meetings - meet your state officers and committee chairmen - share ideas with women from other chapters - go home refreshed and excited about your part in the work of your local chapter! If you have questions about the work of the Professional Affairs committee, please be in touch with me (hartleys@verizon.net or 717-393-5797). Be involved in planning for a successful Delta Kappa Gamma year!

The State Personal Growth and Services Committee members are available to help you at any time. Let us work together to serve our chapters and our members in the best way possible.

Ruth Glotfelty, Kappa
Karen Lindbergh, Beta Epsilon
Linda Lubben, Delta
Barbara Rankin, Alpha Xi
Rini Wolfgarth, Lambda
Susan Stamm, Chairman, Lambda

NOMINATIONS

Take a Swing at Leadership!

WANTED: ALPHA ALPHA STATE NOMINEES

For the 2005 - 2007 Biennium

We seek leaders for the following
positions:

PRESIDENT
FIRST VICE PRESIDENT
SECOND VICE PRESIDENT
RECORDING SECRETARY
CORRESPONDING SECRETARY
NOMINATIONS COMMITTEE

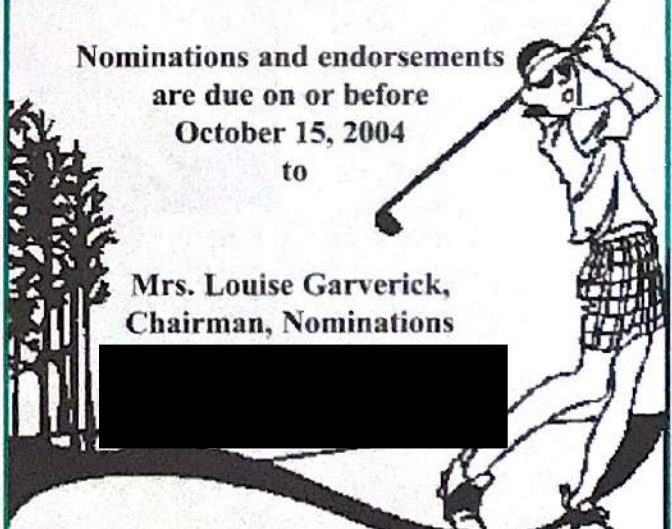
3 members for a 4-year term

FINANCE COMMITTEE

3 members for a 4-year term

Nominations and endorsements
are due on or before
October 15, 2004
to

Mrs. Louise Garverick,
Chairman, Nominations



Recommendation forms for nominations and endorsement forms were distributed at state convention and mailed to chapters unable to attend. Recommendations may come from chapters and/or individual members. Only recommendations and endorsements made on the official forms (or copies of the official forms) will be considered. Forms may also be downloaded from the state website: deltakappagamma.org/PA



Dr. Annie Webb Blanton (portrayed by Cindy Reynolds) and Ruby Lomax (portrayed by Florence Sherwood) join the convention festivities in State College.

Friday evening activities included Scholarship Shop, Projects Display, Fine Arts Retreat Review, Album of Distinction Reception, Chapter Presidents' Training Session, and "Growing Our Own Leaders" meeting.

On Saturday morning, at the first General Session, with Carol Ulrich, State President, presiding, group singing was followed by introduction of nine 2003-2004 initiates, roll call of chapters, correspondence and specific reports, and announcements about area conferences, the Seminar of Purpose, and the Women in the Arts Retreat. (Check future issues of *The Keystonean* for details and registration data.)

Next were Society workshops. Much significant material was presented during these meetings: Leadership for Chapter Presidents, Program of Work, Membership, Finance, Nominations, Rules, Society Opportunities, and Educational Services. All attendees agreed that valuable information from these sessions will guarantee more success in chapter obligations and functions.



The 75th Diamond Celebration Luncheon, with Dr. Lyn Schmid, First Vice President, presiding, featured the

Birthday Chapters Tribute to the following: Beta Rho --- 20 years; Beta Xi --- 30 years; Beta Kappa --- 40 years; and Alpha Zeta and Alpha Eta --- 50 years. It was a fun-filled but sentimental festivity! Another highlight of the luncheon was the presentation of our distinguished Album of Distinction awardees.

(See page 8 for details and photos.)



Esther Grander, Alpha Alpha State Past President and Recipient of the State Achievement Award in 1999, returned to Pennsylvania from her home in Florida to grace us with her presence, to share humor and creativity, congeniality and caring, and to keynote our "Jubilee Convention."

Among her pertinent yet very encouraging remarks were (1) "With tears, chuckles, happiness, and memories, you can go home again!" (2) The wonderful relationships among friends in Delta Kappa Gamma characterize "another special family." (3) Teachers are so very talented in diverse ways, and their leadership roles and their willingness to be risk-takers identify the wonderful prospects of a Society that is 75 years old but is still growing and maturing. (4) The brilliant experience of a special moment will/can be remembered forever! (5) In 1929 our founders were completely dedicated to promoting the interests of women who give their lives to the teaching profession. We must continue to face today's challenges with a deep commitment to all opportunities and advantages associated with membership in the Society. (6) The crux of our membership lies in designing and implementing effective programs for personal and professional growth of all members; in providing leadership opportunities for all members; and in becoming a recognized authority on educational issues. (7) "With faith in one another, we shall win for aye!"

Afternoon workshops provided a real diversity among choices such as these: Project--- Deep Ocean Exploration; Brain Development: Creating Readers and Writers; Safe Kids and their Personal Safety; Writing in the Elementary/Middle School; Scrapbooking; Book Review --- The Past; Elderhostel; and Diamond Cabaret of Visual and Performing Arts.



The Presidents' and Founders' Banquet, with Carolyn Sutton, Second Vice President presiding, featured the



Chapter Presidents' Procession and "The Colors of My Life" by the Alpha Alpha State Chorus. A highlight of the evening was the announcement of the recipient of the 2004 State Achievement Award, who is Barbara Rankin, Alpha Xi.

Following an Ecumenical Service on Sunday morning, the "Celebration of Life," conducted by the Membership Committee, paid loving tribute to the 48 members of Alpha Alpha State who had passed into eternity during the last year.

At the Honors Breakfast members of the Scholarship Committee were delighted to present three Alpha Alpha State Scholarships for graduate studies and six Alpha Alpha State Enrichment Grants for travel to and special study in such places of interest and educational challenge as China, England, Nepal, Australia, and New Zealand.

One of the most enjoyable and enlightening opportunities at the 2004 State Convention involved the sharing of several "Jubilee Moments," for us to celebrate Delta Kappa Gamma's Diamond Jubilee anniversary and to experience a renewed vigor to re-dedicate ourselves to the seven purposes of The Delta Kappa Gamma Society International.



ALPHA ALPHA STATE SCHOLARSHIP AWARDS & GRANTS 2004



Alpha Alpha State scholarships and enrichment grants were awarded at the Honors Breakfast on Sunday, June 13, 2004 at the Nittany Lion Inn in State College. The above women received the awards: (L-R) Gayle Goltra, Nu, Margaret J. Wolf Award; Judith Schaffer, Alpha Upsilon; Yolonda Hutchison, Alpha Upsilon; Kathleen Sillman, Beta Xi; Linda Powell, Alpha Gamma; Lucretia Page, Beta, The Blanche Foster Award for Doctoral studies; Donna Houser, Kappa; Carole Hostetter, Nu, Alpha Alpha State Founders Award; Margaret Hughes, Eta.

Members of the Scholarship Committee, Marlene Buljat, Karen Light, Shirley Lotz, Nancy Sprengle, and Janet Lee Hay, Chairman, made the presentations which included a beautiful certificate designed and lettered by Dr. June Baskin, who is also a member of the committee.

Achievement Award (Continued from page 1.)
many ways, including serving as chairman of the Music, Communications, and World Fellowship Committees. She is so devoted to Delta Kappa Gamma that she has attended almost all state functions and numerous regional and international conventions in her 39 years of membership.

Barb Rankin's devotion to Delta Kappa Gamma is best expressed in her own words, as shared by Joan Glass, State Achievement Award Chairman: "I belong to Delta Kappa Gamma and participate at as many levels as possible because I do believe in its mission: promoting professional and personal growth of women educators and excellence in education. I see this happening at the international level, the state level, and in our own chapter. I have made friends within our chapter, across the state and even across the country. I thank Delta Kappa Gamma for those friendships and our chapter for its support."

Barbara Rankin is an exemplar to all who love Delta Kappa Gamma.

WE SALUTE YOU!

Look for more convention photos in the fall issue of *The Keystonean*.

All convention photographs courtesy Denise Williams, State Photographer.

2004 ALBUM OF DISTINCTION



Alpha Alpha State salutes the following women for their honors received for distinctive service beyond the scope of Delta Kappa Gamma.

Joanne Aurand	Sigma	Volunteer for and President of the Danville-Riverside Area Food
Lois Bryner	Sigma	President of the Columbia-Montour PASR
Assunta Deliman	Alpha Nu	Chosen by the College of New Jersey as Outstanding Educator,
Tracey Dusch	Psi	A Wal-Mart Teacher of the Year
Ruth Elder	Omega	Named as an Outstanding Alumna of Littlestown High School
E. Margaret Gable	Beta Theta	Received the 2003 V. W. O'Connor Public Service Award, Elizabethtown, PA
Joyce Herr	Beta Gamma	Chosen a People to People Ambassador to South Africa, Fall 2004
Bonnie Johnson	Sigma	President of the Geisinger Medical Center Auxiliary; led fundraising for summer medical camps for children
Marilee Kessler	Beta Gamma	High School Counselor of the Year, Pennsylvania School Counselors Association
Lois Miller	Sigma	Past-president of Snyder County PASR; PASR Region 5 Educational Support Chairman
Ann Mount	Phi	Wayne Chapter of PASR Volunteer of the Year; 858 hours of service
Betty Myers	Beta Kappa	Oakley Certificate of Merit from Association of Gravestone Studies for her work of rescuing the Gettysburg Lincoln Cemetery, and for her book: "Segregation in Death: Gettysburg's Lincoln Cemetery"
Linda O'Connor	Omega	The M.J. Stauffer Award for outstanding achievement in teaching mathematics from the Harrisburg Area Community College
Ruth S. Purnell	Xi	Co-Grand Marshall for the 37th annual Tamaqua fall parade
Ann Ratay	Beta Kappa	Elementary School Science Education Award for excellence in teaching science, from The Spectroscopy Society of Pittsburgh
Cindy Reynolds	Beta Rho	The first woman in 146 years elected to the Board of Directors of the Harford Fair Agricultural Society of Susquehanna County
Dr. Katherine Thomas	Alpha Chi	2003 Auxilian of the Year - Presbyterian Senior Care in Oakmont, PA
Elizabeth Wills	Omega	WGAL-TV Learning Matters Great Teacher
Mildred Wright	Alpha Zeta	Inducted into the Troy Area Schools Foundation's Hall of Fame

2004-2006 CHAPTER PRESIDENTS



Row 1 L-R: Sandra Ross, Kappa; Wanda Keller, Iota; Nikki McWilliams, Lambda
Row 2: Lillian Rowland, Kappa; Sharon Carson, Theta; Diana Lininger, Theta



Row 1: Peggy Reimer, Alpha Alpha; Jean Michael, Tau; Christina Fry, Pi; Janet Ressler, Chi; Linda Lubben, Delta
Row 2: Janis Harrold, Psi; Sue Mauck, Omega; Billie Stone, Omicron; Doreen Weaber, Nu; Ann Mount, Phi



Row 1: Valerie Ripple, Alpha Theta; Carol Lane, Alpha Zeta; Jill Funk, Alpha Kappa; Royce Ann Boyd, Alpha Beta
Row 2: Phyllis Carr, Alpha Gamma; Elizabeth Watts, Alpha Mu; Andrea Michaux, Alpha Lambda; Francene Imbrogno, Alpha Epsilon



Row 1: Deborah Angiolieri, Alpha Tau; Margaret Critchfield, Alpha Delta; Mary Anne Smith, Beta Zeta; Kathleen Reiss, Alpha Rho
Row 2: Kathleen Sillman, Beta Xi; Erma Davies, Alpha Omicron; Vivian Watt, Alpha Phi; Mary Delanko, Alpha Chi



Row 1: Millie Pipman, Alpha Upsilon; Eileen Matyas, Alpha Upsilon; Jacquelyn McCalla, Beta Omicron; Karen Stazer, Gamma
Row 2: Karen Tinstman, Alpha Sigma; Mary Lou Kyle, Beta Nu; Marlene Popnik, Beta Theta; Marion Young, Beta Delta; Ellen Baracca, Beta Alpha



THE LEGISLATIVE LINK

By Pat Shedlock, U.S. Forum

NATIONAL LEGISLATIVE SEMINAR A SUCCESS!

Sixty eight educator advocates from thirty three states attended the 2004 National Legislative Seminar on May 2-5 in Washington, D.C. "Got Issues" was the theme of the Seminar and attendees "Got Answers."

The following highlights will give you a glimpse of our dynamic speakers and the organizations which they represented:

1. SUE SHAW is a retired teacher who works endlessly as a grassroots political activist to eliminate the Government Pension Offsets/Windfall Elimination Provision (GPO/WEP). On advocacy, Sue suggests we be proactive, organize, be visible, and develop an action plan.

2. CHARLOTTE COFFELT is a Delta Kappa Gamma member running for the Texas House. Her issues include: increased funding for public education, decreased property taxes, and affordable health care.

3. REG WEAVER, President of NEA stated: "ONE SIZE DOES NOT FIT ALL." His recipe for NCLB: smaller class size, safe and orderly schools, proper funding. www.nea.org

4. LYNSEY MORRIS is the Government Relations Manager/Lobbyist for AAUW. This organization promotes equity for all women and girls, lifelong education, and positive societal change. Ms. Morris stated that stereotypes decide a lot of legislation. "There needs to be an awareness of women's different experiences." www.aauw.org

The next three speakers and their organizations represent "think tanks"-public policy research organizations.

5. DIANE STARK RENTNER is the Deputy Director of the Center on Education Policy. The Center is the national independent advocate for public education and effective public schools. The Center serves as a communicator with the public and educators on educational issues. It does not represent any special interest group and is funded by charitable foundations. www.cep-dc@cep-dc.org

6. KRISTA KAHER is the Senior Policy Analyst for Education with the Heritage Foundation. Two of her works helped define "No Child Left Behind." She authored School Choice 2003.

The Heritage Foundation promotes conservative public policies based on American principles and values.

7. BARBARA GAULT, Ph.D., is the Director of Research at the Institute for Women's Research Policy(IWRP). This is a public policy organization that debates on issues important to women and their families. These include: poverty and welfare, family and work, employment and earnings, health and safety and women participating in politics. This presenter is working on early care and education and access to higher education for women on welfare. "We need to get girls in traditional non-girl jobs."

www.iwpr.org

8. BRITT COCONAUR is the Deputy Political Director of Emily's List. This is the largest grassroots political network that raises money for pro-choice Democratic women running for office and aides them with developing a strong campaign. The U. S. is 57th in the world of women in politics. "WOMEN ARE QUALIFIED. They are more positive and bring a different perspective."

www.emilyslist.org

9. CHELLIE PINGREE is the President and CEO of Common Cause, a non-partisan citizens' lobby aimed at effective government at all levels. Their interests are: democratic reform, engaging citizens and government watchdog activities. Ms. Pingree suggests we commit to getting people out to vote; go to the polling places on voting day and ask if the machines have been certified. This encourages keeping elections clean.

www.commoncause.org

Check out the web sites provided for more information.

Tuesday, May 4 was the traditional Seminar's "Day on the Hill." We had a chance to meet with our legislators about issues which included talking points developed during the Seminar.

While we were awed by our impressive list of speakers, we were equally thrilled to attend the live "CROSS-FIRE" TV show with JAMES CARVILLE and TUCKER CARLSON as the hosts.

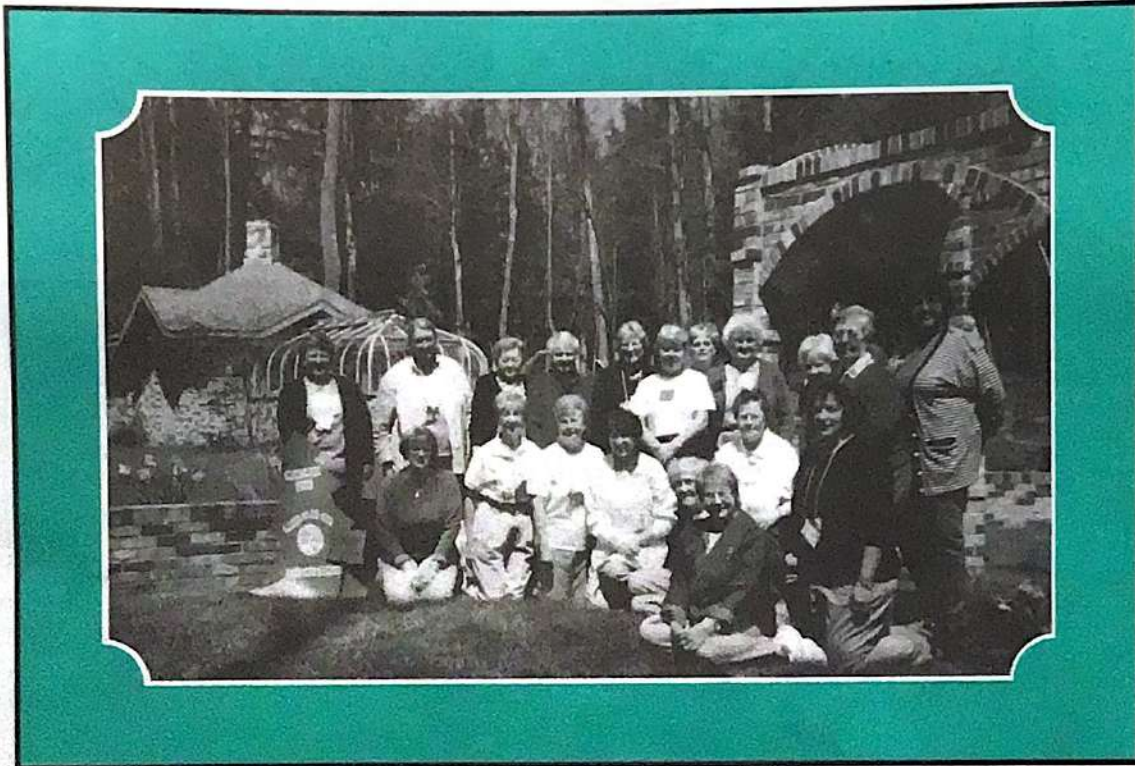
It was truly an exciting seminar! We were stimulated by great speakers, energized by new thoughts and motivated to continue advocating and taking action on issues affecting women, children and education.

Creativity explored at Women in the Arts Retreat

Submitted with photos by Suzanne Long, Terri Stetler and Carolyn Sutton

It was springtime at The Woods. Daffodils and trillium were both abloom. Alpha Alpha State sisters gathered for the first Alpha Alpha State Women in the Arts Retreat, April 23-25, 2004. Henry and Sylvia Wood provided the perfect setting for relaxation and creativity.

Gifted and talented Delta Kappa Gamma sisters shared their artistic expertise at the workshop sessions. Opportunities for visual and the performing arts added spice to the weekend. There was time for fine arts, crafts, music, comedy, meditation, and genuine spiritual fellowship.



Twenty happy women spent the weekend in The Woods. They crafted, talked, bonded, and made lasting friends. Will you join them next year? Mark your calendar for April 22-24, 2005!

Co-planners, Terri Stetler and Carolyn Sutton thank our presenters: Gail Bollinger, Pi (Culinary Arts); Kathy Cummings, Pi (Drawing); Ruth Gamble, Pi (Corn Husk Dolls); Louise Garverick, Beta Kappa (Paper Stitchery); Yolonda Hutchison, Alpha Upsilon (Drama); Suzanne Long, Beta Theta (Scrapbooking); Lynne Mitchell, Kappa (Stamping Up); Sylvia Wood, Pi (Hand Applique); Sue Waltemyer, Eta (Jewelry); and Grace Schauer, Pi, who in addition to leading an Orff Schulwerk workshop offered music opportunities throughout the weekend. The photos tell the story.

(Continued on page 12.)

Grace Schauer leads Friday night sing-along outdoors around the campfire.



Terri and Carolyn, ever ready with their cameras.



Sharon Herzog perfecting her Smores' skill!

MAKING MEMORIES AT THE



Carolyn Sutton explains how to make a name tag to Irene Murphy, Jean Myers and Sue Waltemyer.



Judy Castano discusses her paper stitchery project with Louise Garverick while Sharon Herzog chooses materials.



Ruth Gamble's students Kathy Cummings, Grace Schauer, Irene Murphy and Sylvia Wood create beautiful corn husk dolls.



Grace Schauer and Suzanne Long craft elegant refrigerator magnets in the Quickie Craft corner.



Gail Bollinger instructs Ann Mount and Ruth Althouse on the fine art of separating an egg.



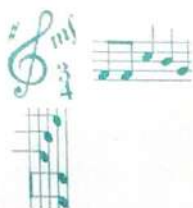
Suzanne Long shares her scrapbooking expertise with Sharon Herzog.



WOMEN IN THE ARTS RETREAT (Continued from page 11)



Lynne Mitchell has eager stamping students in Judy Castano and Carolyn Sutton.



Sue Waltemyer guides Mary Kay Torrey and Kathy Cummings in the creation of their necklace.



Kathy Cummings points out pertinent details in her drawing workshop to Judy Castano.



Grace Schauer and Orff students Ann Mount and Carol Wagner perform for us Saturday night live!



Sylvia Wood demonstrates the techniques of hand applique to Ann Mount and Louise Garverick.



Yolonda Hutchison and Jean Myers plan for the long-awaited debut of Professor Wood and his infamous invention.



CHAPTER NEWS

ALPHA ZETA



Alpha Zeta members Deb Keppler and June Wynne display literacy brochure inserts.

DELTA KAPPA GAMMA DONATES BOOKS

The Alpha Zeta Chapter of Delta Kappa Gamma, an honorary society of women educators, recently donated books to the Robert Packer Hospital in Sayre and Memorial Hospital in Towanda. The books are part of the literacy program the chapter has adopted. The books are given to new mothers as they leave the hospitals with their infants. Inside each book is a literacy brochure with activities and suggestions encouraging parents to read to their children, starting at the earliest possible age. The brochures were prepared by the INTERACT club of Canton Jr/Sr High School. The students have been helping the Alpha Zeta Chapter with their literacy project for the last 4 years.

Alpha Zeta projects chairperson, Vicki Van Noy, is very pleased with the students' work on this worthwhile project. She states that in the past several years over 1500 books and literacy pamphlets have been donated to the hospitals.

Maternity ward nurses accepted the books on behalf of the hospitals. In Sayre, Linda Henry, RN, and Joan Brignola, RN, distributed the books. In Towanda, Kim Burgert, Diane VanNote, Sharon Pavey, and Martha Dunn received and distributed the books.

Submitted with photo by Joan Roy, Alpha Zeta President

ALPHA UPSILON

MAKE IT FUN AND GAMES!

By Judith Schaffer, Treasurer

Collecting yearly dues for any organization is always a responsibility dreaded by most treasurers. In fact, most members shy away from accepting the position of the treasurer. Why? We have let the treasurer's image become that of the dull counter of monies.



TREASURERS OR WANT-A-BEES REBEL! Let's improve our image by making it one of fun and games. I admit it, I enjoy working with money, even when it's not my own. Tom Cruise's movie slogan - BRING ME THE MONEY! - can be our battle cry.

In my chapter, Alpha Upsilon, Kathy Firestone, Finance Chairman and myself, decided to have fun dealing with our necessary assigned duties. We promoted our own financial awards to be given out at each meeting. This year's award was a dinner plate embellished with a red rose. Here are some of our categories:

First dues paid for 2003-04

First retiree to pay their dues

First members to pay their dues at our September meeting

Last member to pay in September

Make up your own categories to stimulate your chapter members. After presenting your treasurer's report (always printed on wild agenda papers), announce your awards. Even members who missed meetings could be winners. Send their award via mail for the personal touch!

Try an early bird drawing. Any member who paid their dues by September 30 was eligible. The drawing was held for a bag of assorted gift items in October. It really worked! By October 1 we only needed 15 members to pay their dues out of 82.

Keeping money collected at meetings accurate can be a stressful problem. I give out pre-labeled, self-sticking wild colored envelopes to each chairman. They are then returned to me sealed, thus amounts are more accurate.

I also have a little red box which travels to meetings with me. Inside is a card for each budget amount with up-to-date transactions noted. I can instantly report to each chairman what they have spent or still have available.

Do you have financial ideas to share? Contact me at the following address:

Judith L. Schaffer

CHAPTER NEWS

BETA KAPPA



Beta Kappa members celebrated their 40th birthday with a brunch/cruise on the Potomac River aboard the *Odyssey*. There was a record attendance and everyone had a fantastic time. In the first photo are 12 past and present presidents of Beta Kappa. The second photo records all the participants after the cruise. Look at all of those smiles!

Submitted with photos by Louise Garverick

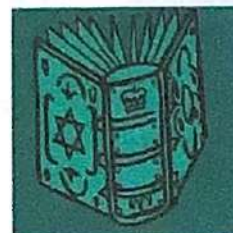
ETA



Eta Chapter recently sponsored a Delta Kappa Gamma Literacy Night at the Sylvia Newcombe Parent Center. York City School District students and their families were invited for a meal provided by the chapter, story reading and enrichment activities including a strategy for re-telling the story. Each child received a book and a "retell" glove made by chapter members.

Photo left - Eta members, Sue Reich and Joanne Peters (in the background) serve students and parents the meal.

Lower left - students eagerly respond to the review of the story read by Eta volunteers.



Every child went home with a new book to read, a smile on his/her face and a retell glove on his/her hand!

Photos submitted by Ruth Althouse

EXPANSION

GETTING BACK ON TRACK!

By Maryann Tustin, Beta Omicron, Chairperson

The Expansion and Membership Committees met in November, 2003, to decide on areas of the state that each person would canvas for new chapters. While doing this, we also realized that there are several issues facing many chapters that take precedence over sponsoring a new chapter such as low membership at meetings, retaining current members, finding people to serve as officers, and programs. In this article, I will point out some of the specifics of these problems and offer some possible solutions or ideas that I have gathered from the chapters with whom I have spoken.

Scenario: Chapter A meets on a week night four times a year, always at a restaurant. Dinner begins at six o'clock followed by a one or one and a half hour program. The final part of the evening is then devoted to a business meeting. Sometimes the evening ends at 9:30 or 10:00 o'clock. Attendance, therefore, is low because the retired members do not like to go out at night, and several who are still teaching have families and school-related responsibilities. As a result, at times there are not enough members present to vote on important issues. When the chapter was asked why they always meet on a week night at a restaurant, the answer was "It's a tradition."

Possible Solutions: Tradition is lovely, but can impede a group from moving forward. Delta Kappa Gamma, first of all, is not entirely a social organization, and the primary reason for meeting should be purposeful and business-oriented. Find a public library that has a community room in your chapter area. As we know, libraries need money, and a donation for the use of the room would be appreciated. If you have two libraries in your chapter area, use both. If you don't have a library, find a church or school where you could meet. Secondly, try holding chapter meetings on Saturday morning from 10:00 A.M. to 12:00 Noon. Don't have lunch; have refreshments provided by member hostesses. The Second Vice President could be responsible for making lists of hostess committees for the year. They could provide coffee, tea, fruit cocktail, cookies, muffins or whatever finger foods they choose. Start gathering at 9:45 A.M. so members can participate in silent auctions, opportunities (raffles) or other activities. Madam President, however, will need to be well organized and

bang the gavel on the dot of ten for the meeting to start. If you have a speaker, be sure they know they will have 40 minutes including questions from the members. If a speaker cannot make her point in 40 minutes, she will never make it in an hour. Then, at 10:40, break for refreshments. At 10:55 A.M., the president should ask the members to fill their cups and plates and return to their seats for the business meeting. The business meeting should follow an agenda prepared by the president. If you get hung up on an issue and the President sees no solution at the time, table it until the next meeting with the idea that everyone needs to give it more thought. Chances are all your business will be concluded by 12:00 Noon or earlier. By choosing this solution, more members will attend a well-organized two hour meeting rather than a four hour one. Following this meeting, members who want to socialize can go out for a nice lunch at a restaurant of their choosing, or as a group, plan an evening banquet in May as a Founder's Day Celebration. These ideas have come from chapters operating very successfully with this plan.

Officers: It is the responsibility of all members to take a turn at being an officer or committee chairperson. When each does her part, the chapter will run smoothly. Some chapters have a problem finding a member willing to serve as President. Perhaps she would be more apt to accept the presidency if she could find someone to share her responsibilities such as writing, printing and mailing the newsletter and attending state convention and area conferences. Officers need to learn to delegate, to delegate, to delegate!

Programs: Have your Program of Work Committees (Personal Growth, Professional Affairs, etc.) take the responsibility for planning for the year. Each program should be no more than 40 minutes in length. Have representatives from your chapter attend state convention and area conference workshops presented by the Program of Work Committees. Also, at these meetings, talk with members of other chapters about their programs and about how their chapters plan fundraisers, projects, etc.

Hopefully, I have given you some ideas that may help you to retain members and to bring people to meetings. You must realize that Delta Kappa Gamma women are busy, so make an effort to respect their time. Don't make every meeting a serious one; do something informative but fun. Use the multiple talents of your own members as presenters to make your chapter feel good about itself.

Good luck with getting your members back on track!

In Memoriam

Mildred H. Dodge

(Continued from page 20.)

Curriculum and Federal Programs for the Wyalusing Area School District. During her tenure, she initiated the Head Start Program. She was very active in her community, serving on numerous committees and boards.

Hazel M. Dougherty

December 21, 2003

Hazel was an active member of Zeta to the age of ninety-one! In her forty years as an educator, Hazel worked as teacher, counselor, and home school visitor.

Anne S. Gamble

August 11, 2003

Anne was a conscientious business teacher with many years of service. She was active in Alpha Psi Chapter's work of the society.

Ethel Hinkel

December 19, 2003

Ethel taught for twenty-one years, then served on the school board for fourteen years. She was a member of Sigma Chapter.

Leone LaMotte

December 24, 2002

Leone was a former Beta Chapter president and long-time member in Maryland before moving to Pennsylvania and

transferring to Beta Chapter. She regularly attended conventions. Leone taught elementary school for forty-three years in the Baltimore County School District, Maryland.

Caroline E. Petrullo

December 12, 2003

Caroline was an active Delta Kappa Gamma member, serving on numerous chapter committees in Sigma. She taught for forty-four years.

Carrie I. Shultz

October 14, 2002

Sigma Chapter was honored to have Carrie as a member. Her daughter, Carriann is also a member of The Delta Kappa Gamma Society International.

Helen K. Strueve

January 28, 2004

Helen served Theta Chapter as president, vice president, and chairman of various committees. She was a teacher, principal, and administrator in the Pittsburgh Public Schools.

Dorothy L. Warren

April 14, 2003

Dorothy served as Recording Secretary of Alpha Xi from 1974-76. She was an elementary school teacher in the Avonworth School District.



Insurance plans have been created for ΔKT:

- Excess major medical
- Cancer Insurance
- Travel Accident
- Medicare Supplement
- Long Term Care
- Hospital Plus
- Surgical Assistance

Also Available:

- General Liability
- Officers Liability
- Fidelity Bond
- Educators Professional Liability

For more information and brochures contact
International Headquarters 1-888-762-4685 ext. 208
or email debbied@deltakappagamma.org

ΔKT

Dates to Remember

2004

July 27-31 - International Convention
Aug. 13, 14 - State Officers & Committee Chairmen meet
Clarion in Carlisle, PA
September 18 - Area Conference - Alpha Tau, Sharon, PA
October 16 - Area Conference - Chi, Lancaster

2005

TBA - Seminar of Purpose
April 22-24 - Women in the Arts Retreat
The Woods B & B, Knoxville, PA
June 10-12 - State Convention, Nittany Lion Inn
August 3-6 - Northeast Regional, Cleveland, Ohio

2006

June 9-11 - State Convention, Nittany Lion Inn



"Opportunities"

(music: "The Bare Necessities" from The Jungle Book)

Words written by Grace Schauer

Look for the opportunities, the world of opportunities
Reach out to see what challenges you'll take.
I mean the opportunities, the sea of possibilities,
Adventures that raise our quality of life.

Whether I am teaching or just retired,
Each day I'll search for something new.
My life is just a journey that needs constant
inspiration
Until opportunity becomes reality!



Delta Kappa Gamma
75th Anniversary Jewelry
designed by George Ihnat will be sold by
Alpha Alpha State at International
Convention in Minneapolis, MN.
To order your pin, contact:
Cynthia Kramer

ALPHA ALPHA

WEST

Titusville - Alpha Tau, Host Chapter
Saturday, September 18, 2004
Cross Creek Resort

Registration will begin at 9:00
Continental Breakfast will be served until 10:00

Directions: Cross Creek Resort is located on Rt. 8.
It is approximately 5 miles south of Titusville
and 20 miles north of Franklin.
Rt. 8 can be accessed from both Interstate 80 at exit 29
and Interstate 90 at exit 29.
Cross Creek is a large golf resort and well marked.

For overnight accommodations, call 1-800-461-3173
Workshops are designed for Society Business.
Please indicate your choice of workshops on your reservation form.

Society Workshops

- *Presidents/Parliamentarians
- *Scholarships
- *Membership/Expansion
- *Treasurers/Finance
- *Program (includes Personal Growth, Professional Affairs, Research, Projects, and Visual and Performing Arts)
- *Communications
- *Historical Records
- *World Fellowships
- *Legislative Liaison

Continental Breakfast/Registration/Luncheon: \$22.00

Checks Payable to Delta Kappa Gamma, Alpha Tau
Reservations due by September 1, 2004

Kim Bresenhan

AREA CONFERENCE, TITUSVILLE, PA

Chapter: _____
Name of Attendee: _____
Workshop choice: _____
Enclosed \$ _____ for _____ reservations.

STATE AREA CONFERENCES

EAST

Mountville, PA (Lancaster area) - Chi, Host Chapter

Saturday, October 16, 2004

Mountville Elementary School

Visit a new, state-of-the-art elementary school building!

Experience a wonderful opportunity for new or returning officers and chairmen to receive important information from Alpha Alpha State leaders!

- | | |
|-------------|------------------------------------------------------------------------------------------|
| 9:00-9:30 | Registration / 'Coffee Time' |
| 9:30 | General Session: "Growing Our Own Leaders"
Presented by Alpha Alpha's Leadership Team |
| 10:15 | Break |
| 10:30 | Society Workshops: Something for everyone! |
| 11:30 | Break |
| 12:00 | Lunch - a 'yummy' menu! |
| 12:45 | "Music with Grace" |
| 1:00 | Act 48 Workshops |
| 2:00 - 2:15 | Adjournment |

Now it's time to shop at the outlets!!!

Overnight accommodations: October is a busy tourist season for the Lancaster area. Be sure to reserve rooms as early as possible. www.lancastercounty.com has a listing of overnight accommodations.

Directions to Mountville Elementary School:

Mountville is located immediately off US 30, west of Lancaster, PA. You can see the building from Route 30 at the Mountville exit.

FROM the NORTH: PA Route 283 or US 222 South to Lancaster. Follow directions to US Route 30 WEST. Continue on US 30 WEST to the Mountville Exit. At the top of the exit ramp, turn left, crossing over Route 30. The school is immediately on the right.

FROM the WEST: US Route 30 EAST, crossing the Susquehanna River at Columbia. Continue to the 3rd exit, Mountville. At the top of the exit ramp, turn right. The school is immediately on the right.

FROM the EAST: US Route 30 WEST, continuing past Lancaster. Continue to the Mountville exit. At the top of the exit ramp, turn left, crossing over Route 30. The school is immediately on the right.

A Reminder from State Treasurer, Linda Fisher

The following items are to be sent to the State Treasurer:

- \$ Form 15-Annual report of chapter treasurers (due July 15)
- \$ Form 18-Report of dues and fees (November 15)
- \$ Form 18A-Resignations, deaths, non-payments (Deaths are to be sent immediately)
- \$ Form 43-State Contributions to State only
- \$ Initiate Cards and Reinstatement Cards (all information)
- \$ Change of Address Cards (Please use the cards provided)
- \$ Make checks payable to The Delta Kappa Gamma Society International

AREA CONFERENCE- MOUNTVILLE

Reservation deadline - Sept. 10, 2004

Registration: \$5.00
Registration and lunch: \$23.00
Checks to: Delta Kappa Gamma - Chi

Send this form and payment to:
Sandra Rothfus

Name*: _____

Chapter: _____

Chapter office: _____

Registration only (\$5) _____

Registration/lunch (\$23) _____

* For more than one person, include a separate page indicating names, offices and whether the person wishes to order lunch.

The Keystonian
5795 B Crone Road
Dover, PA 17315

NONPROFIT ORG.
U.S. POSTAGE
PAID
YORK, PA
PERMIT NO. 323

The Keystonian
Terri Stetler, Editor

Denise Williams
State Photographer

The Keystonian is published four times a year by Alpha Alpha State (PA) Organization of The Delta Kappa Gamma Society International at Caskey Printing, Inc. 850 Vogel song Road York, Pennsylvania 17404



DEADLINE FOR THE KEYSTONIAN: August 1, 2004

In Memoriam

Jean E. Biggs
November 9, 2003

Jean, Omega Chapter President from 1960-1962, was the chapter's first president to attend the International Convention. Jean taught for fifty years in the Gettysburg schools and was a recipient of the Richard A. Folkenroth Meritorious Service Award for outstanding dedication to the youth and schools of Gettysburg.

Olive K. Bryan
December 9, 2003

Olive, a member of Alpha Xi, taught first grade in the Avalon School District, which is now part of Northgate School District.

Anne B. Call
April 21, 2004

Anne served twice as chapter president of Alpha Psi and was also active in committee work. An elementary teacher, Anne taught kindergarten, Head Start and art classes. She was author of a booklet entitled, "Kindergarten Wisdom".

Marjorie M. Denniston
November 23, 2003

Marjorie was active on various committees in Alpha Sigma Chapter. She loved to travel, visiting thirty-six foreign countries and forty-nine states. Marjorie gained recognition for her community service.

Dora Mae Desmone
February 15, 2004.

Dora made Alpha Upsilon a family affair, sponsoring her daughter and her niece for membership. She taught third grade, special education and served as librarian.

Mildred H. Dodge
January 26, 2004

Millie was an active member of Delta Kappa Gamma, serving as president of both the Alpha Zeta and Beta Rho Chapters. Millie set an example for participation in the Society with her attendance at meetings, conferences, seminars, and state convention. Millie was the Coordinator of
(Continued on page 17)