



# The Keystoneian

The Delta Kappa Gamma Society International - Key Women Educators

Official Publication of Alpha Alpha State PENNSYLVANIA

## STATE PROJECT: FEEDING AMERICA--- MIND, BODY, AND SOUL

By Sharon O'Connell, State Projects Chairman

**T**his time of the year we are particularly thankful for all that we have. With the economy in the doldrums and 15 million people unemployed we are especially thankful. Therefore President Stamm's theme of *Feeding America: Mind, Body, and Soul* is very relevant. President Stamm became interested in the nonprofit organization *Feeding America* after reading an article in *Time* magazine this summer. *Feeding America* provides food assistance to 25 million people; 9 million are children and 3 million are senior citizens. This is accomplished through the use of over 200 food banks throughout the United States, the District of Columbia, and Puerto Rico. *Feeding America* supports over 63,000 local charity organizations that distribute food to Americans in need. This is done through the use of food banks, emergency shelters and after school programs.



However, we as members of Delta Kappa Gamma have also participated in the *Feeding of America: Mind, Body, and Soul* throughout the years. Think of all the local organizations your chapter sponsors through

raffles, raising of funds through your projects committee, and your own personal time. The Projects Committee would like to gather this information to share how sisters of Delta Kappa Gamma are *Feeding America: Mind, Body and Soul*. Surveys will be e-mailed to all chapter presidents in January 2010. The purpose of the survey is to find out what activities your chapter participates in *Feeding America: Mind, Body, and Soul*. The Projects Committee will compile this

information and have a visual display at convention in June, 2010.

In future *Keystoneian* articles the Projects Committee will share what activities will be organized for convention to help fulfill President Stamm's desire of *Feeding America: Mind, Body, and Soul*.

### You are invited...

to renew your spirit in the heart of nature and rekindle your passion at the 5th Creative Arts Retreat!



Come to the Country Place Retreat and Conference Center  
White Haven, PA  
April 23-25, 2010

Come join your sisters in this private retreat as we discover and develop our creative energies. The Country Place is just a short drive from Wilkes Barre, PA, 5 minutes off I-80.

See pages 8 and 9 for workshop listings and registration form.

### INSIDE The Keystoneian

President's Message-----	2
Membership-----	3
Program of Work-----	4-6
Legislative Link-----	6, 7
Arts Retreat-----	1, 8, 9
Step into Tech-----	12
Chapter News-----	14, 15
In Memoriam-----	16

## Alpha Alpha State Officers 2009-2011

### President

Susan Stamm

### First Vice President/ Program of Work Chairman

Louann Shrader

### Second Vice President/ Membership Chairman

Kay Stuart

### Recording Secretary

Patricia Shedlock

### Corresponding Secretary

Tracey Dusch

### Treasurer

Linda O'Connor

### Parliamentarian

Carol Herbert

Website: [deltakappagamma.org/PA](http://deltakappagamma.org/PA)

### Editor

Terri Stetler

## Alpha Alpha State President's Message

By Susan Stamm



President Susan Stamm

By the time you receive this *Keystonian* issue, you may be in the midst of holiday hustle and bustle; but I urge you to take the time to sit down and read your state news from cover to cover. There is so much happening that you need to know. Stay connected and informed! This is one way to rekindle your passion for DKG membership.

Another way to rekindle the passion is to spread the word about the benefits of Society membership. Among these are:

- ❖ Communication with approximately 107,000 Key Women Educators in 16 countries
- ❖ Scholarships of \$6,000 from International plus scholarships and enrichment grants from our state
- ❖ Four issues of *The Delta Kappa Gamma Bulletin*, six issues of the *Delta Kappa Gamma News*, and four issues of *The Keystonian*
- ❖ Golden Gift Fund Leadership Management Seminars and Special Stipends
- ❖ Assistance from the Emergency Fund in times of disaster
- ❖ Opportunities to assist women educators in non-Society countries to study in Canada and the U.S. through contributions to the World Fellowships Fund
- ❖ Project grants funded by The Delta Kappa Gamma Educational Foundation
- ❖ Awards for professional development funded by the Lucille Cornet Bequest

Pennsylvania has received word that Sharon Ferringer, Alpha Iota, has received a Cornet Professional Development Award and plans to attend an Educational Leadership Theory and Practice course at Edinboro University. Congratulations, Sharon! Others from Pennsylvania have also received this award. Perhaps you would like help to pursue a goal; check out the Cornet Professional Development award and apply; the next deadline for applying is February 1.

If you increase visibility of the Society in your community, you will rekindle the passion also. Be sure to submit press releases to local media about chapter projects and activities. Always identify affiliation with Delta Kappa Gamma when receiving recognition or honor. Prepare your "Elevator Speech" to use out in the community when someone asks, "What is Delta Kappa Gamma?" It should grab attention and be concise. An example might be, "We are a professional organization of key women educators. We have more than 100,000 members in 16 countries and provide scholarships, leadership training, mentoring and global networking opportunities for women." Check the website, [www.deltakappagamma.net](http://www.deltakappagamma.net), for other examples. Speaking of the website, why not assign a chapter member to regularly check the website and our Pennsylvania link for new information and report that at meetings?

Your state officers and several committees met in October to work. The Projects Committee met as part of the Program of Work and launched a new state project for this biennium. We will be *Feeding America--Body, Mind and Soul*. Look for Sharon O'Connell's article in this issue for details. The decision was made to support a project at home and one that will require little monetary support with these economic times. The Projects Committee will be coordinating some fun activities for the Friday Night Fling at state convention next June. I am excited about this project and hope you will get on board, too. *Continued on page 3*

# MEMBERSHIP



By “Annie” (aka Kay Stuart, Membership Chairman)

**Dear Annie,**

**Over the past several years, our chapter has had many questions regarding reserve membership. Could you shed some light on the topic? Kari Ing-Member**

Dear Kari,

Our governing documents are the International Constitution and the Standing Rules, and the Constitution (III.B.2) is quite clear on this issue.

❖ Reserve membership shall be granted ONLY (emphasis added) to those who are UNABLE (emphasis added) to participate fully in the activities of the chapter because of physical disability and /or geographic location.

❖ Reserve status shall be granted by a majority vote of the chapter. A reserve member, so requesting, may be restored to active membership by a majority vote of the chapter.

Standing Rule 3.3 (amended 2008) states: “Reserve members may attend meetings and participate in all of the activities of the chapter EXCEPT THAT OF HOLDING OFFICE (emphasis added).” Thus, no reserve member may act as an officer in her chapter.

Please note the word “unable” above: It means that the member cannot participate in chapter activities because of physical disability. She may be in a care center; she may no longer be able to drive; she simply is unable to attend.

The other possible reason for granting Reserve Status is that the member is geographically isolated from any chapter, not just her own. She may have moved to an area where there are no chapters at all, so she can request reserve membership.

In general, then, a member who is a working educator is not eligible for reserve status unless she is geographically isolated because she is physically able to participate. A “snowbird” who lives away from her primary residence for a portion of the year is not eligible for reserve membership because she may, if she wishes, attend meetings in a local chapter in the area she resides for the winter.

## PRESIDENT’S MESSAGE Continued from page 2

Personal Growth and Services Committee is working on a Spiritual Unity Service, *Heartsongs*, for Sunday morning. This will be a little different than the meditation services we have had previously.

The Professional Affairs Committee has put out a call for workshop presenters for the 2010 State Convention. If you could present, please submit your proposal; or if you know someone who has presented a workshop that would suit our membership, encourage her to apply. Once again, we will be honoring those women who have distinguished themselves in ways outside of Delta Kappa Gamma. Begin considering which members would qualify for this. The spring issue

**Dear Annie,**

**So the holidays are over and the winter blahs have hit. Is there anything coming up that our members should be looking forward to? Wanda B. Warmer**

Dear Wanda,

I'm glad you asked! Members are the HEART of the Society, and the Alpha Alpha State Leadership Team has been busy planning events to rekindle the passion in our members' hearts. Look for the Creative Arts Retreat (April 23-25, 2010) details on pages 8 and 9 in this publication. Now, don't say you are not artistic, so this is not for you. I happen to know your state 2nd vice president is not artistic at all, but she will be there. She knows there is something for everyone.

You should make plans now to have a minimum of 5 members attend the state convention in State College (June 11-13, 2010). Look for information in the spring issue of *The Keystonean*. That weekend will rekindle your passion for the Society and your profession! (Don't forget to publicize your attendance at these events.)

July 20-24 is the 2010 International Convention in Spokane. Be there if you can. There is no better way to learn about our Society and our sisters than by getting involved. Keeping members active in the work of the Society is like physical exercise for our bodies. It is good for the heart, and our members are the heart of the Society.

of *The Keystonean* will have criteria for selection. The nomination form is available online. For the first time, Alpha Alpha State will be honoring women who have earned a Doctorate degree or have received National Board Certification. Chapter presidents will be receiving letters from Professional Affairs Chairman, Karen Tinstman, with more information.

The Research Committee also met and established goals for the biennium. They are anticipating changes in committee structure after International Convention in Spokane next July. Check out Cindy Reynolds' article in this issue.

A benefit of membership that Alpha Alpha State

*Continued on page 7*



# PROGRAM OF WORK

## The Program of Work...at Work

By Louann Shrader, Chairman

The Program of Work Committee along with Membership and Expansion met in October to design the course of Alpha Alpha State as it continues to provide opportunities through the seven purposes that move the Society towards the vision of our founders. Fueled by the power of imagination, synergy and creativity abounded. Look for an exciting biennium as we “start from the heart and rekindle the passion” for which President Sue Stamm has challenged us to strive.



Photo Left: **Personal Growth Committee** members (L-R): Joan Peters, Beta Rho; Chairman Carol Goodman, Beta Rho; Ruth Althouse, Eta; and Donna Winch, Beta Theta  
Photo Right: **Visual and Performing Arts** - Donna Houser, Kappa, (center) speaks with Personal Growth Committee members (shown in photo to the left)



**The Personal Growth and Services along with the Visual and Performing Arts Committee brainstorm ideas on a Spiritual Unity Service to be held at convention.**



Photo left - **Research Committee** members (L-R) Constance Roupp, Alpha Zeta; Molly Spinney, Lambda; and Chairman Cindy Reynolds, Beta Rho; also for Research but missing from picture and in attendance at meeting was Gwen Singer, Alpha Alpha

Photo below - **Projects** - (L-R) Vanessa Sral, Beta Epsilon; Dana Lawyor, Beta Epsilon; Amy Buddock, Beta Omicron; and Chairman Sharon O'Connell, Omega

**Research at work designing its new look as it becomes part of all committees**



**U. S. Forum** Liaison, Liz Brewer (L) discusses plans with Karen Tinstman, **Professional Affairs** Chair.

**U.S. Forum and Professional Affairs help each other focus on and plan for workshop topics on professional development.**



**You'd smile, too, if you knew what they had in store! Imaginative and exuberant, the Projects Committee has the Friday night fling thought out and rearing to go. Look for another fun convention in the pursuit of our purposes!**

# PROGRAM OF WORK

## Professional Affairs

By Karen Tinstman, Chairman

### ► Call for Workshop Presenters and Women of Distinction Nominees

The Professional Affairs Committee has begun to plan for the Alpha Alpha State Convention in June, 2010. One of our convention responsibilities is to provide meaningful workshops for convention participants. This year we are searching for a variety of workshops, including those that provide Act 48 credit. If you or someone you know would like to present a workshop at next year's convention, please complete an application available on the state website and mail it to the address shown. The Professional Affairs Committee will review all applications and notify each presenter. We hope to offer several types of workshop opportunities. We look forward to hearing from many of you!

Another important convention activity for the Professional Affairs Committee involves the **Women of Distinction** nominees. Begin now to consider members who have distinguished themselves in professional, civic, or religious organizations beyond Delta Kappa Gamma between May, 2009 and May, 2010. The criteria for selection will be available in the next *Keystonian*. **The form will be available on the state website: [deltakappagamma.org/PA](http://deltakappagamma.org/PA)**

Finally, we have something new to announce. At next year's convention Celebration Luncheon we will not only be celebrating birthday chapters but also honoring those women who have received their Doctorate or have been honored by the National Board Certification since the 2009 convention. If you know of any sisters who have achieved this honor, we want to hear from you. Each chapter president will be receiving a letter introducing this new celebration.

Convention will be here sooner than you think. The planning has already begun. What better way to showcase your chapter and/or encourage participation than by presenting a workshop, nominating a sister for Women of Distinction, or celebrating a recent Doctorate or National Certification honor!

## RESEARCH is the HEART of Committee Work

By Cindy Reynolds, Research Chairman

In the September/October 2009 issue of the DKG News, an article titled Regional Task Forces Hear Members summarizes the results of the research undertaken by the International Ad Hoc Committee on Committee Structure. The study of the documents, committees and current practices of the Society resulted in thoughtful considerations which reflect the views of the members. This is an excellent example of the decision-making process outlined in the research column in the summer issue of *The Keystonian*.

In the DKG News article, it was stated that "the Task Forces concurred that each international committee should do the research pertaining to its work, and other research should be handled by ad hoc committees appointed only when such research is needed. Therefore, the Research Committee should be discontinued." This will be addressed at the International Convention in July, 2010 in Spokane, Washington. If this proposal is adopted by International, then it would affect the committee structure at both the state and chapter levels.

As a result, one of the goals of the Alpha Alpha State Research Committee during this biennium is to assist the other committees in the transition, showing that research is the HEART of all committee work.

Other goals of the Research Committee include the following:

- ❖ to assist chapters in keeping chapter profiles and demographics up-to-date in an easily accessible format such as a spreadsheet. Each chapter member's name, address, phone number, e-mail address, area of teaching certification, and membership status - active, retired, or reserve - should be included in the profile. Since loss of membership in the Society is a major concern, maintaining this information is critical to each chapter as well as the state membership and expansion committees.
- ❖ to compile an on-going data base of personal and professional workshops available by members and chapters. More about this and a form will appear in this column in the Spring, 2010 issue. Start thinking now who in your chapter makes presentations which could be a part of this data base.

The research committee is available to help your chapter in any way. Contact information for the chairman and members of the committee appeared in the yellow directory of *The Keystonian*.

## PROGRAM OF WORK

### Personal Growth and Services

By Carol Goodman, Chairman

Alpha Alpha State's Personal Growth and Services Committee has been hard at work planning a number of activities to enrich the personal lives of all sisters. Opportunities will be offered throughout the convention weekend to enhance sisters' lives in a variety of ways.

Beginning Saturday morning of convention, members of the Personal Growth and Services Committee will present a 10-minute overview as part of the Program of Work workshop. This will inform chapters of ways they can implement ideas related to the five goals of the International Personal Growth and Services Committee: To promote the United Nations, the arts, healthy lifestyle practices, lifelong learning and effective communication.

A tri-fold board will be on display, educating sisters about the purposes and goals of the committee. Pamphlets related to the Personal Growth and Services Committee will be made available.

Early Sunday morning a "Service of Spiritual Unity" will be presented by members of the committee. The theme is "Heart Songs," and will inspire all who attend. This service will replace the Meditation Service.

The members of the Personal Growth and Services Committee are dedicated to improving and expanding sisters' understanding of this committee and providing help to chapters to implement relevant programs.

Joan Peters, Donna Winch, Ruth Althouse,  
Sandy Klingsmith, Carol Goodman, Chairman



## THE LEGISLATIVE

### HEARTBEAT

By Elizabeth Brewer

### From Vision to Action: Advancing the Society Through The US Forum

#### Mission of the US Forum

The United States Forum seeks to serve the interests of members and reflects the purposes and mission of the Society. Emphasis is on sharing information and ideas that explore solutions to common problems.

#### OPPORTUNITIES:

**Internationally** - The Committee on Teaching About the United Nations (CTAUN) announces its 2010 Conference, "Developing Globally Literate Students: 21st Century Skills, Emerging Technology and The United Nations" on January 15th at the Rutgers Student Center, New Brunswick, New Jersey. Prominent speakers, experts from the United Nations and other global educators will share how 21st century skills need to be integrated in the K through post secondary classrooms. Register for this event before Wednesday, January 6th. For more information, go to [www.teachun.org/main\\_conf.html](http://www.teachun.org/main_conf.html).

**Nationally** - The US Forum of DKG announces the National Legislative Seminar for 2010 will be held on March 14-17 at the Hyatt Regency, Crystal City, in Arlington, Virginia. Hear and interact with speakers on educational issues, health care, social security and equal pay for women. Participants will travel to Capitol Hill and visit with their senators and representatives. Registration is due by Friday, February 12th and may be found at [deltakappagamma.org/USForum/documents/ fileNLS%20Registration%20Form.doc](http://deltakappagamma.org/USForum/documents/fileNLS%20Registration%20Form.doc). A registration form is downloadable from that site.

#### NATIONAL HEARTBEATS:

##### FDIC INSURANCE ALERT

The Helping Families Save Their Homes Act (H.R. 1106/S.896) included an extension of the \$250,000 deposit insurance limit through December 31, 2013. The act was signed into law on May 20, 2009 and is Public Law 111-22. Note that as the law stands now taking out a 5 year CD will not protect the value of the CD over \$100,000.

##### HEALTH CARE REFORM

Contact your legislators in Washington to express your concerns on insurance reform. Share your story of how you see quality, affordable health care benefits for all; a

### PRESIDENT'S SCHEDULE

2010

- |                      |   |
|----------------------|---|
| <b>January 15</b>    | CTAUN Conference,<br>Rutgers University<br><i>Developing Globally Literate Students</i> |
| <b>January 22-23</b> | Leadership Development Committee<br>Lewisburg   |
| <b>TBA</b>           | Professional Affairs Committee<br>State College   |
| <b>March 6</b>       | Combined chapter visit: Beta Pi, Beta<br>Omicron, Beta Alpha and Beta Mu<br>Frazer, PA  |
| <b>March 13</b>      | Scholarship Committee<br>Somerset   |
| <b>March 14-17</b>   | National Legislative Seminar<br>Arlington, VA   |
| <b>March 19-20</b>   | Chapter Presidents' training, East  |
| <b>March 26-27</b>   | Chapter Presidents' training, West  |



public health care option; no taxation of health care benefits; no caps for pre-existing conditions and coverage for students who are still uninsured.

### **RACE TO THE TOP**

The new administration has announced the "Race to the Top" program (RTTT). The plan would award \$4.35 billion to states on a competitive basis. School districts would be able to apply for school improvement grants (SIG). Be watchful of this as collected data could be used for teacher and principal evaluation and compensation.

For on-line information on specific bills go to <http://thomas.loc.gov/>

### **CONTACT ADDRESSES FOR GOVERNMENT INFORMATION**

U.S. GOVERNMENT CONTACT INFORMATION can be obtained through Congressional Switchboard 1-866-327-8670 (this is a toll free number). You can contact your congressman and senator through this number without paying long distance charges.

<http://www.house.gov/> for members of the House of Representatives

<http://www.senate.gov/> for members of the U.S. Senate

### **COMMONWEALTH HEARTBEATS:**

#### **PENSION SPIKE**

Local school districts and the state government are looking towards 2012-13 when the employer contribution rate is expected to increase from 4.78% to 29.40% in its payroll. This is due to the under funding by the government and district officials since 1998. Currently there are two bills in the General Assembly that would close off PSERS to new employees. These new hires would be put into a separate plan with reduced benefits. Changes to the system would eventually weaken and reduce support to PSERS and could possibly end consideration of COLAS. Contact your legislators with your concerns!

#### **COVERAGE FOR CHILDREN TO AGE 29**

Effective December 7, 2009, insurers who provide coverage to children of employees must offer, at the policyholder's (employee's) request and expense, coverage for children up to age 29, provided that the child meets all of the requirements of not being married; has no dependents; is a resident of PA or is enrolled as a full time student at an institution of higher education in the USA; and is not provided coverage under any other group or individual policy nor entitled to benefits under any government health care benefits program, such as Social Security. Payments for coverage must be made through payroll deduction.

### **STATE GOVERNMENT CONTACT**

#### **INFORMATION can be obtained through**

<http://www.emailyourgovernor.com/> Information available at this site allows contact with governors, members of the state legislature, state supreme court, congressional delegation and state agencies such as the Education Department, Attorney General, Motor Vehicles Department and Voter Registration.

**INFORMATION ON HOW YOUR CONGRESSMAN VOTED ON KEY BILLS** <http://projects.washingtonpost.com/congress/110/bills/>

### **FIVE CONSTITUENT CONTACTS WILL CAUSE A LEGISLATOR TO PAY SERIOUS ATTENTION TO A GIVEN ISSUE.**

#### **PERSONAL OPPORTUNITY:**

Do you do a cultural exchange program in the United States or internationally in your classroom or other educational arena that would be of interest to the sisters of Alpha Alpha State? If so, would you go to our state's web site and complete the International Cultural Exchange Activity and send it to me by April 15th, 2010. Ideas will be shared at the convention in June.

---

### **STATE PRESIDENT'S MESSAGE**

*Continued from page 3*

provides is the Leadership Development Training for incoming chapter presidents. This will take place on March 19-20 for the east and March 26-27 for the west. The state organization covers the cost of meals and lodging for the weekend and all training materials. This training will give incoming presidents the self-confidence they need to lead their chapters effectively. I encourage all chapters to present their slate of officers soon and send their presidents to one of these events. More information will be coming. Alpha Sigma has already presented a slate of officers for the 2010-2012 biennium at their October meeting. Great work!

And finally, to rekindle the passion, take a weekend for yourself and attend the Fifth Annual Creative Arts Retreat on April 23-25. You can participate in the sessions (or not), enjoy the fellowship of Delta Kappa Gamma sisters, and be able to reconnect with yourself in the beauty of The Country Place Retreat. As busy women, we usually put ourselves last; however, if we take time for renewing ourselves, we become better for everyone.

In closing, I leave you with this thought, *"From home to home, and heart to heart, from one place to another, the warmth and joy of Christmas brings us closer to each other."*

Emily Matthews

## 2010 Creative Arts Workshops and Presenters



### **Travel Journal Scrapbook Display and Workshop**

A display of travel journal scrapbooks made by our sisters will be exhibited on Friday evening at the Creative Arts Retreat. Many of you travel extensively, are accomplished photographers and create travel journal scrapbooks of your travels. Join us on Saturday for a workshop time where we can share our experiences. I encourage you to bring your travel scrapbooks to share and to generate discussions about your travel experiences. Please put your name somewhere on or inside your scrapbooks.

### **Cross Stitch by Ann Mount**

Relax in a comfortable lounge chair and create a beautiful cross stitch book mark. Kits will be provided for you to choose from. Just bring a pair of small snippy scissors and join me on Friday night.

### **The Reading Woman - Book Reviews and Discussion by Donna Houser**

If you love to read, are members of a book club, or thinking about joining or starting a book club, join us for a discussion about your recent most favorite books. Find out what books your sisters have been reading and what books they recommend. Bring a maximum of three books to share with our group. Please put your name on or inside your books.

**Guitar for Dummies: No Experience Necessary!! by Shirley Newhart** Learn to tune, strum, and read guitar charts in one easy lesson. Come with your guitar or let us know if you need a loaner.

### **Early Morning Adventure Walk with Carol Lane:**

Breathe in fresh air, stretch your legs, and explore the surroundings of The Country Place and discover an ancient tradition near the creek.

### **BEGINNING BRIDGE: Joan Roy**

Learn the basics of one of the greatest card games. Learning how to deal, bid, play and score may seem like a challenge, yet it is a game you can enjoy for years to come. At this workshop you will actually play some hands to see how the basic tools of bridge work together to create a very enjoyable and social opportunity.

### **Reiki: Stephanie Olver**

An introduction to the body's energy field with an emphasis on Reiki - Experience the energy field that surrounds and affects your body and try some self-Reiki, an ancient Japanese healing art.

### **Rags to Bags by Grace Schauer**

Bring your sewing machine and some fabrics and go home with a new purse of your own creation to throw over your shoulder. You will need to have some sewing experience. I promise that a three hour workshop will get it done.

### **Notan Design by Linda Nickerson**

This workshop involves creating an art piece by using light and dark paper. Notan is a Japanese art form that can be explained as: what is dark is not light and what is light is not dark. In this workshop participants will have a hands on opportunity to create their own designs using the concept of Notan. All participants will be using scissors, paper and their imaginations. Our finished products will multiply fast and will be added to the registration gift bags for North Eastern Regional Conference in 2011.

### **ipod Gadgets and Gismos with Linda Nickerson**

If you don't have an iPod, please feel welcome to attend and observe, but if you DO have one, please bring it for an informative workshop of practical tips on how to use the iPod. Participants will learn how to add lyrics to your music, record, make CDs and much more using their iPod. iPods aren't just for music anymore!

### **Watercolor by Cindy Reynolds**

Learn new skills and techniques and use them in your own watercolor creation.

### **Gift Boxes by Haddie Weber**

Let's make a "Gift Box" from those beautiful cards that you do not want to part with. This workshop will teach you how to make a little box for that little gift item or use it as a "favor box." Supplies will be provided. Bring a pair of scissors.

### **Scents-Smells-Fragrances by Judy Castano**

Scents-Smells-Fragrances! Whatever you call these aromas, they are exciting! Come and discover what they can do for you and to you. Energy, alertness, peacefulness, and tranquility can all be yours with essential oils. Learn about these plant substances and their effects. Everything will be provided except your nose.

### **Dance Your Way to Good Health with Shirley Newhart**

Love to dance? Want to shape up? Dance your way to health and fitness at our Spring Arts Retreat as Shirley Newhart leads you through the paces of some Latin American dance steps. Bring your sweats and expect fun!

### **Kaleidoscope Pictures / Karen Ball**

Kaleidoscope are photos manipulated into pieces of art suitable for framing and perfect for scrapbooks. You will learn how to take a photograph and make a "Kaleidoscope Picture Design" by cutting the images and reverse images and piece it together (pizza pie like) to make a larger geometric picture. This two hour session will open a new concept for displaying your memories.



## 5th Annual Creative Arts Retreat

April 23-25, 2010



The Country Place Retreat  
White Haven, PA

Name: \_\_\_\_\_

Address: \_\_\_\_\_

City & Zip: \_\_\_\_\_

Chapter: \_\_\_\_\_ Phone: \_\_\_\_\_

Email: \_\_\_\_\_

Educational Position (Retired): \_\_\_\_\_

What is your expected time of arrival on Friday? \_\_\_\_\_

I have special dietary needs. Specify: \_\_\_\_\_

I have difficulty climbing stairs. \_\_\_\_\_

### Please circle your selection

\*Weekend registration:

Dorm \$280 per participant

Semi \$335 per participant

\*Saturday only (includes 2 meals) registration:

\$70 per participant

\*1 Night Only registration:

Dorm \$160 per participant

Semi \$190 per participant

(I will be staying Friday / Saturday night.)

**Includes:** meals, snacks, room, and materials for activities. All rooms will be dorm style (no upper bunks) or semi-private. Retreat registration and room reservations will be handled by Kay Stuart.

Make checks payable to:

*The Delta Kappa Gamma Society International*

## Workshop Selections:

*Circle Your Choices*

### Friday

Travel Journal Scrapbook Display  
Scents-Smells-Fragrances  
Cross Stitch  
The Reading Woman

### Saturday

8:30-9:30

Adventure Walk

Gift Boxes

8:30-10:30

Kaleidoscope Pictures

8:30-11:30

Rags to Bags

9:35-10:35

Scents-Smells-Fragrances

10:40-12:40

Kaleidoscope Pictures

The Art of Jewelry Making

10:40-11:40

Guitar for Dummies

11:45-12:45

Notan

1:30-2:30

Notan

Zumba

1:30-3:30

Watercolor

Scrapbooking

2:35-4:35

Beginning Bridge

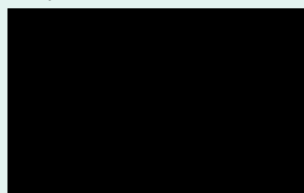
3:40-4:40

Reiki

iPod Gadgets and Gismos

**Mail check and registration form by April 1, 2010 to:**

**Kay Stuart**



**bring your selected photos and memorabilia to the arts retreat.** We will provide all the other materials and supplies. If you already have a scrapbook album, new or started, please bring it with you. E-mail the presenters with your theme so that we can have the appropriate materials ready for you.



### The Art of Jewelry Making by Ann Cook

Beading is a skill that is both enjoyable and challenging. Once you master a few basic techniques, you will be able to use your creativity to create pieces of jewelry. We will make at least one pair of earrings for you to keep and I will show you how to make other pieces as well. The sky's the limit! There will be a small charge to cover the beads and findings. You should bring a pair of needle-nose pliers with you to the retreat. If you have round nose pliers, bring those, too. You may use my tools as needed. I look forward to working with you!

### Arts Retreat Workshops

*Continued from page 8*

#### Scrapbooking 101 by Donna Houser & Suzanne Long

Chances are you have boxes of photos and memorabilia somewhere in your attic or closet. Scrapbooking is a rewarding and enjoyable way to organize and preserve your photos and memories. This is your opportunity to learn the basic elements and guidelines of scrapbooking. Decide on a theme: travel, wedding, pets, grandchildren, birthdays, anniversaries, friends, church, etc. Then

# APPLY for ALPHA ALPHA STATE SCHOLARSHIPS and ENRICHMENT GRANTS

Alpha Alpha State Scholarships and Enrichment Grants are available to members in good standing who have held membership for at least three years.

**Scholarships** will be offered for graduate study leading to an advanced degree or certification or toward job/self improvement. Credit may be earned during a regular or summer term at an accredited college/university.

A scholarship recipient may apply more than one time, but an individual's total may not exceed the maximum of \$7,000.

**Marian Spitzer Robling Scholarship** The Marian Spitzer Robling Scholarship will be awarded to one active member in her 1st, 2nd, or 3rd year of Delta Kappa Gamma membership who is working in graduate study. The approximate amount of \$1000 will be awarded each fiscal year.

**Enrichment Grants** will be awarded for enrollment in an Elderhostel program, continuing education for personal and professional growth, a travel/study tour, or to develop an approved independent study project or to present a paper to a professional organization.

An Enrichment Grant recipient may receive a one-time award in each of the following categories:

1. Elderhostel or continuing education
2. Travel/study
3. Individual project, research project, or presentation of a paper

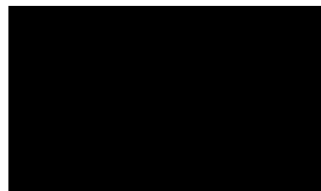
An applicant may not receive more than \$5000 from Enrichment Grant monies. The following "Alpha Alpha State Scholarship Award Point System" will be used as criteria for selection:

1. Proposed use of scholarship (30 pts.)
  - a. Purpose of proposed graduate work or graduate travel/study
  - b. Projected time plan
  - c. Extent to which courses are completed
  - d. Use of scholarship money
  - e. Status of dissertation (doctoral candidate)

2. Society participation (30 pts.)  
Officer, Committee Chairman, Committee Membership at Chapter, State, and/or International levels; attendance, participation, responsibilities at conventions/meetings in areas, states, regions, or at International level
3. Professional involvement (20 pts.)
  - a. Professional organizations
  - b. Job-related activities
  - c. Special honors/awards/publications
  - d. Professional letters of recommendation
4. Other involvement (10 pts)  
Community activities/awards/honors



**Contact...Janet Lee Hay,  
State Scholarship Chairman**



...for further information or for application materials.

**Application Deadline:  
Postmarked...February 1, 2010**

**Application forms for State Scholarships, Enrichment Grants and Achievement Award can be downloaded.**

**Go to Alpha Alpha State website at  
[www.deltakappagamma.org/PA](http://www.deltakappagamma.org/PA)**

**Click on Committees in Action.**

**Click on download button and print.**

**Please note the procedural clarification that scholarships and enrichment grants are to be used in the fiscal year following the convention they are awarded.**

**See Enrichment recipients' travelogue on page 11.**

# An Alaskan Enrichment

by recipients Grace Schauer and Kay Stuart

What could two Pennsylvania gals learn from a trip to the 49th state? Oh, so much. Alaska is a state rich with more than oil. The vast wilderness, the wide variety of animal and plant life, the history, the tapestry of Indian cultures, the music, the folktales, the glaciers, and the warm and welcoming citizens are the real wealth of the state. Our lives became richer as we spent two weeks discovering the real gold of Alaska.

Since Alaskan culture is still very much its native Indian and Eskimo heritage, there is a unique blend of the past and the present wherever you travel. From the northern and coastal regions where the Aleut and Inupiaq Eskimos settled, to the central regions far into the mountains where the Athabaskan Indians lived, to the southern coastal regions near Juneau and Ketchikan where we found settlements of Tlingit Indians, we were welcomed with dances and folklore that helped us understand their culture. Grace and her husband Don danced and sang a ceremonial chant dressed in bright black and red capes with the Saxman tribe of Tlingit Indians near Ketchikan. They made it simple for the visitors, but we felt a part of their culture. These Indians were the great totem pole carvers who taught their children native history tribal traditions through each section of carving. The pole began when they were born and finished when they reach adulthood.

Music was a part of survival as well as communication in each tribe's ceremonies, daily activities, and language. We could only be amused and would need to make a long study of their music to understand and enjoy it. However, the music that we found most enchanting was that of sounds that nature and wildlife make in the silence of the night and early morning. There was the quiet chit-chat of the prairie dog as he scampered to safety; the mating call of the caribou near the river; the droplets of misty rain as it hit the thick vegetation in the rainforests south of Juneau; the variety of bird calls ever so gentle and rhythmic to the raspy calls of the golden eagle and loon. The chickadee, a year around resident, could be heard and seen around the flowers at each lodge where we stayed.

Did we mention the flowers? We were amazed at the beautiful gardens around the villages and surrounding the lodges. Blossoms twice as big as those in Pennsylvania! Shrubs a darker green! Cabbages two feet wide as far north as Fairbanks! How could this be? We were in Alaska, the coldest state boarding the tundra! Grace had to ask a gardener who was watering the huge dahlias in Denali. "Summer is short here," she said, "but the days are longer and the sun is much brighter. These flower beds and wild flowers along the

roads are getting 22 hours of sun each day." Grace couldn't resist picking up a watering can and giving a hanging basket of petunias a deserving drink in the middle of the hot evening sun.

One of our favorite stories told by our travel guide expressed just how far Alaskans will go to protect their wildlife. It was September, and past time for the hummingbirds

to have flown south for the winter. An elderly woman had not taken down her feeder, as she had become ill. The feeder had kept a hummingbird too long. The community knew that the bird would not be able to make the flight alone, so just taking down the bird feeder for the old woman wasn't the solution. They had to do more if the bird was to survive. They did! They captured the hummingbird, hired a pilot, and flew the bird south to safety!

We saw many spectacular views and places. One interesting town was Talkeetna, where Mt. McKinley climbers must check in before setting off on their adventure. It is also the town on which the old TV show, "Northern Exposure" was based. From the brief time we were there, we would say that it was fairly accurate. In a side note, a restaurant in this tiny town featured a chef who had cooked at Camp David for the first President Bush. We found this out after it was too late to sample his cuisine.

Mt. McKinley, or the Indian name Denali, is truly majestic, yet shy. While we were at Denali National Park, she would only give us small glimpses of her beauty. It was not until we had traveled to Anchorage, 200 miles away that she unveiled herself to us. What grandeur! We were able to get some beautiful pictures. Pictures speak a thousand words, but do not begin to tell of this natural marvel!

We also had the opportunity to cruise Alaska's Inside



Grace "watering" the flowers at the Kenai Princess Lodge

Continued on page 13



# STATE COMMITTEE COMMUNICATIONS

## Step Into Tech with Bonnie Barnes

### Basic Technology - 101

In a recent issue of *The Keystonean* there were 112 references to web sites and technology. For many of us, using this form of electronic communication is a daunting task since most of us were born much before the birth of today's technological innovations. That is not to say that we are "older than dirt" but to emphasize the fact that "stuff" used today wasn't around 50 years ago. We could walk down memory lane and remember the first televisions with only three major networks, rotary phones, cameras that used film and flash bulbs, and the button on the left side of the brake pedal that switched high beams on or off in automobiles that are now considered antiques. To coin a well known phrase, "We've come a long way, baby."

This brings us to computers, a frightening endeavor but one that must be faced and conquered. Our Alpha Alpha State President, Susan Stamm, said it best in her presidential message in the *The Keystonean*. "There is so much in the area of technology that controls our lives. Everyone else is using its devices so we must also learn or be left behind. I will have to leave my comfort zone in order to learn about Facebook, blogs, twitter, Go to Meeting.com, and all the other terms. I am willing to step out in faith, will you come with me?" Well, ladies, our president has laid down the gauntlet and it is our duty to persevere or be left behind. For me being left behind is not an option so my first article to you will cover the basics about using a computer.

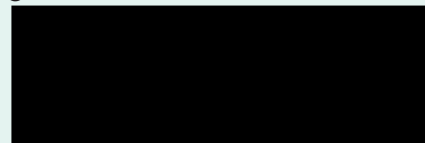
Consider the steps you go through in driving a car. You open the door, sit down (hopefully in the driver's seat), put the key into the ignition and turn, grab the steering wheel, shift into drive, hit the gas pedal and go. Granted, a few other items taught to us in Driver's Ed 101 have been left out, but you basically have a mind picture about the process that we all do automatically in order to get from one place to another.

Computer use is the same. First you have to sit down in front of a blank screen, locate the on switch and press (ignition). Now place your right hand on the mouse (steering wheel) and gently move the pointer to the desired icon (little picture on the screen) and click (shift into drive). The program selected will now upload and appear on your screen (hit the gas and go). You are now driving through the program selected, reading the road signs and following the directions given to complete the task. As in actual driving, if you make a wrong turn, you hit the brake. On the computer, it is that marvelous little "back arrow" located at the top of the screen. It is equivalent to the term "do-over" that we all grew up with. You move your mouse so that the

pointer is on the back arrow and click. You are now able to redo your last step, similar to the "recalculating" message heard on today's GPS systems (sorry, I digress. GPS is really advanced technology that will be covered later). When you have reached your destination, click on save. This will store all your work in an electronic file cabinet that can be retrieved at a later date. The most important thing to remember at this step is the name under which you saved it. Nothing is more frustrating than trying to locate work that you did because you forgot the file name. At this moment, many of us resort to calling on Saint Anthony, the Patron Saint of Lost Things, which works as well as clicking on each file until we find the one we want.

My challenge to you, after this simplistic approach to computer use, is to step out in faith as President Stamm has encouraged us to do. Find a computer, sit in the driver's seat and step on the gas. Most importantly, remember to PUT ON YOUR SEAT BELT! Today's technology will open doors you may have never opened before, so hang on tight and enjoy the ride. Oh, the places you will go. . . .

In future issues of *The Keystonean* I will try to cover those technological issues that are of interest to you. If you can, email me with your concerns, or write to me using the ever faithful pen and paper. Let's step out in faith together.



**NOTICE:** Theta, Alpha Chi, Alpha Upsilon and Alpha Phi Chapters are holding a Multi Chapter Meeting at Edgewood Country Club featuring Lu Page and her travels to Vanuatu. Please join us on April 17, 2010 at 11:30 for lunch and an adventure. Look for more information in the spring issue of *The Keystonean*.



### Attention Committee Chairs and Officers

It is time to begin thinking about your financial needs for the next year. Budget Requests are due by April 1, 2010.

Please send to  
Kathleen Kuzmiak



## THE HIGHEST HONOR IN THE STATE

Glance again on our web site or in the fall *Keystonian* at the multitudinous pictures of Alpha Alpha women at the state and regional conventions this year. Are they members of your local chapter? Do they carry out significant work in our state organization while being actively involved in your local chapter? Is there one particular woman, whom you can name, deserving of the highest honor in Alpha Alpha State?

The Alpha Alpha State Achievement Award is given to recognize and honor a member who has given distinguished and outstanding service to Alpha Alpha State and has promoted the purposes and the policies of the Delta Kappa Gamma Society International.

This award will now be given biannually, and therefore, our next recipient will be named at the 2011 State Convention. It is, however, not too early to begin to identify a worthy nominee from your chapter and follow her Delta Kappa Gamma work. In future editions of *The Keystonian* and ultimately on the web site, we will post additional information about the nomination process. Meanwhile, if you have any questions, please feel free to contact the State Achievement Award Committee Chairman, Melody Hannegan at [viatoretis@comcast.net](mailto:viatoretis@comcast.net).

### ...and another Honor!

**Sharon M. Ferring** has received a Cornet Professional Development Award in the amount of \$1000. She plans to use her award to attend Educational Leadership Theory and practice at Edinboro University.

*Congratulations, Sharon!*

### Finance Committee

By Kathleen Kuzmiak, Chairman

Three of our members receive stipends for their tremendous service to Alpha Alpha State. The awarding of these stipends is based on evaluations completed by each state chapter. Our Treasurer, *Keystonian* Editor and Webmaster appreciate the input from these evaluations which provide the opportunity for each chapter to make suggestions or add accolades on the evaluations. For the past two years, the return rate from the state chapters has been about 60 %. We are hoping to see an improvement this year.

The letters with evaluation forms and description of duties were mailed in September to chapter first vice presidents (and in a few cases to chapter treasurers in October). **Return deadline is December 1, 2009.** Our committee thanks you in advance for your attention to these materials. Any questions can be forwarded to me at [REDACTED]

## An Alaskan Enrichment

Continued from page 11



Kay's first sight of Mendenhall Glacier.

Passage to see the incredible College Fjord and Glacier Bay. Noted naturalist John Muir's poetic descriptions have drawn visitors to this area since 1879. We could hear the thunder of the glaciers moving over the frozen ground below them, witnessed calving - the birth of icebergs. We also observed a wide variety of marine life such as whales, sea otters, and harbor seals. Seeing the whales was a special treat for me (Kay) and my husband Ed, because it was not the first time we had seen some of these creatures. These would have been some of the same whales we had seen giving birth to their calves when we lived in Hawaii a few years ago. It was good to spend time with our old friends.

Cruising on the Princess Line was an experience in itself, however, we continued to learn about Alaska as wildlife experts and naturalists boarded our ship for programs and a great display of Alaskan environmental books. We attended a folksinger's program that taught us Alaskan history from the Russian era to the gold rush days and on to American colonization.

We had hoped to learn some things about Alaskan art, music and folklore, and to perhaps make a connection for our students to better understand that part of the world. Boy, did we!

*Submitted with photos by Kay Stuart*



### "We Are Family....."

Come Celebrate!

The following Alpha Alpha State Chapters will be celebrating milestone birthdays in 2010. To be honored and showcased on Saturday, June 12, 2010, at State Convention's Celebration Luncheon in June are the following chapters:

#### 65 Years

Epsilon	April 7, 1945
Zeta	April 7, 1945

#### 55 Years

Alpha Theta	January 22, 1955
Alpha Iota	March 19, 1955
Alpha Kappa	April 16, 1955
Alpha Lambda	June 4, 1955

#### 35 Years

Beta Omicron	May 10, 1975
--------------	--------------

# CHAPTER NEWS

## BETA OMICRON

### DKG Networking Across the Globe

How are Pennsylvania, Montana, and Saipan related? Through a new second grade teacher in Saipan!

Lacey Nerdig, the new teacher, began a two year teaching position last September in Saipan, a US Commonwealth in the Northern Marianas Islands (they say if you fly west from California for 5 hours, pass Hawaii, continue west 7 hours, turn right at Guam and head north for half an hour, you will reach Saipan, a 14 mile long and 5 mile wide island). She teaches twenty-one second graders who live on the island. Teaching there is challenging because of the partial language barrier, cultural differences, and a totally different climate. She is also teaching English to her students. Lacey is a native Montanan and is the daughter of Don and Jean Nerdig of Columbia Falls.

Enter Pennsylvania. Lacey's dad, Don, is the Campground Supervisor at Fish Creek Campground in Glacier National Park where Sam and Alida Menefee are summer campground host employees. Alida is a DKG member from Beta Omicron, Pennsylvania. Of course, the proud dad spoke of Lacey's new position in a far-away land. He also mentioned that although Lacey had a nice classroom and basic materials, she lacked the "extras" that make teaching more interesting and rewarding for her students (such as crayons, stickers, pencils, books, glue, puzzles, etc). He mentioned that he, Jean, and sister Lisa were sending materials to Lacey via Priority PO boxes. Alida decided to send a box to Lacey, too. In the meantime, Alida also proposed "Lacey Project" to share with her DKG chapter back in Pennsylvania. Beta Omicron gladly accepted her ideas to support Lacey by sending materials---initially three times a school year.

Enter Montana. Through networking with DKG chapters in Lacey's hometown area, Alida contacted Carolyn Pfrimmer of Lambda chapter in Kalispell, Montana (town nearest Lacey's hometown), and Carolyn contacted Laurie McCurdy of Upsilon chapter in nearby Big Fork, Montana. And guess what? All three chapters joined together to send materials to Lacey, so she received a box a month for the entire school year!

The next step was to plan a summertime meeting in Montana so the ladies could meet Lacey, who had come home to Montana for a month's vacation. That happened on August 12 when Carolyn Pfrimmer and Sandra Bradford from Lambda and Alida Menefee from Beta Omicron met for lunch. Unfortunately, Upsilon was not able to attend. Although it was a rainy day in Kalispell, there was plenty of sunshine at the lunch meeting. Lacey shared her teaching experiences with the DKG

ladies. What a lovely get-together; there was a special DKG bonding experience and we all felt we had known each other for a long time. Isn't that how it is with DKG women? Lacey was thrilled to meet us and was very appreciative and impressed with DKG's support for her students. Beta Omicron, Lambda, and Upsilon also pledged to continue to support Lacey during her second year with more boxes and materials. In fact, the three chapters also joined together to purchase a reading program which can be duplicated so Lacey can use it for her students and also share it with the other three second grade classes in her school.

So DKG is making yet another impact on students in a far-away place. We are truly sisters united. We can accomplish wonderful things working together and help make a difference for children everywhere. Plus, we hope Lacey will become a new DKG member, too. With the enthusiasm she shows for her students, she'll make an exemplary member!

P. S. If your chapter is interested in supporting Lacey's school too, contact Alida Menefee [REDACTED] for a list of needed supplies or further information.



(L-R) Sandra Bradford, Carolyn Pfrimmer, Lacey Nerdig and Alida Menefee meet in Montana.

*Submitted with photo by Janet Seum*

## PSI



Initiated into Psi Chapter at Ridgway on September 19, 2009 were the following women: (L-R) Susan Wolfe, Punxsutawney; Caryn Stoll, Punxsutawney; Julie Aaron, Redbank Valley; Judy Perrin, Brockway; Pam Hartzfeld, Brockway; Stacey Sherwood, Brockway; Valerie DePope, AC Valley; and Jessica Girts, Ridgway.

*Submitted with photo by Tracey Dusch*



## CHAPTER NEWS

### BETA IOTA

#### Woman of the Year

A teacher never stops being a teacher in the eyes of their students, no matter what day of the week, season of the year, or decade of life. Our Beta Iota honoree for this year, Lorraine Beshore, is indeed one of those teachers of influence. Lorraine was initiated into Delta Kappa Gamma in 1988.



Lorraine earned a degree in Elementary Education at Penn State Harrisburg's Capital Campus in 1971. She later rejoined the student body at the Penn State Harrisburg campus in pursuit of her Master's degree which was awarded in 1975.

Lorraine officially joined the Central Dauphin School District faculty in the fall of 1971 as a fourth grade teacher at Tri-Community Elementary School.

### ALPHA SIGMA INITIATIONS



Bottom Row: Michelle Ault, Laurel; Diana Borowski, Union; Patti English, IUIV; Jonica Walters, Ellwood City  
Top Row: Kristen Murphy, Laurel; Heather Eagleton, Neshannock; Pauline Grant, New Castle  
Not Pictured: Kathy Coll, PASC Assistant State Executive Director; Beth Ann Pollio, Shenango

*Submitted with photo by Stephanie Fulena*

In the last four years, Alpha Sigma has initiated over thirty new members. The nine new members in 2009 are educators from six different Lawrence County school districts, an intermediate unit, and a state student leadership organization. Formal initiations were held at Armstrong Utilities in Butler, PA on October 17. Orientation was presented using DKG 101, a power point presentation provided on the International website and adapted by Alpha Sigma President Stephanie Fulena. Second Vice President Debi Allebach presided. She was assisted by President Stephanie Fulena, First Vice President Rose Ann Fulena, and Immediate Past President Karen Tintsman.

She taught as a Title I Math teacher, working in multiple buildings after her first son was born. And after her second son, she returned to teach sixth grade, and has remained there ever since. Throughout her teaching career her ingenuity, resourcefulness, knowledge base, and natural leadership skills have been continuously recognized. She has been hand-picked by Central Dauphin Administration to serve as a highly respected and contributing member of numerous district and building initiatives. On other occasions, she took it upon herself to develop exemplary programs that became the keystones to improved learning. Lorraine's family, building principal, and friends, describe her as a powerhouse - resourceful, dedicated, committed, highly effective, excellent communicator, and perfective are consistently heard. Additionally qualities such as knows how to teach, connects with kids at all levels, and flexibility are a constant.

*Submitted with photo by Beth Acri Bowen*

### BETA THETA

#### HOW I BENEFITED FROM MY MEMBERSHIP!

By Donna Winch



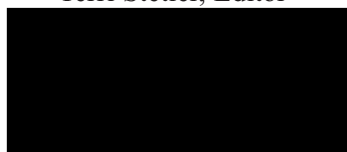
Allow me to encourage each and every one of you to take advantage of the opportunities that DKG provides us - primarily the Lucille Cornet Award. This is an International award that is granted four times a year, giving one the chance to receive financial assistance throughout the year. That's precisely why I applied. The workshop at Penn State, "A World of Possibilities: Teaching Music from a Global Perspective" was not publicized until March, long after the deadline of February 1 for the state-given Enrichment Grants.

The \$250 I was granted paid for the class plus meals. The class was very beneficial. I had the opportunity to study with Nick Page and Tony Leach - both nationally recognized for their expertise in teaching the music of many cultures. The class was held during the Arts Festival in State College and the participants in the workshop performed with Dr. Leach's incredible PSU choir "The Essence of Joy" - a real high point for all of us.

I am most grateful to DKG for providing me with this wonderful experience which in turn, should be most exciting as well for my students at Infinity Charter School.

*From the Beta Theta Chatter & Data*

*The Keystoneian*  
Terri Stetler, Editor



Karen Ball  
State Photographer

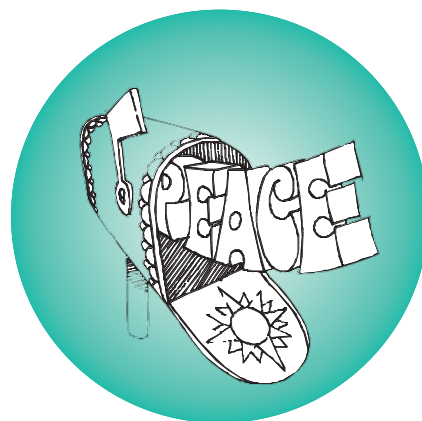
*The Keystoneian* is published four times a year by Alpha Alpha State (PA) Organization of The Delta Kappa Gamma Society International at Caskey Printing, Inc.  
850 Vogelsong Road  
York, Pennsylvania 17404

NONPROFIT ORG.  
U.S. POSTAGE  
**PAID**  
YORK, PA  
PERMIT NO. 323



INTERNATIONAL SOCIETY FOR KEY WOMEN EDUCATORS  
**DELTA KAPPA GAMMA**

*promotes professional and personal growth of women  
educators and excellence in education.*



**DEADLINE FOR *THE KEYSTONIAN* February 1, 2010**

## *In Memoriam*

*Janet Hopkins*

July 8, 2009

As a member of Lambda Chapter, Janet served cheerfully on a wide variety of committees since 1965. Her career in education spread over parts of five decades, with the final 18 years as professor in the Westminster College Department of Education.

*Lucille Hough Robson*

July 22, 2009

Lucille was a 4th grade teacher in the Susquehanna School District, where she enjoyed doing special class projects. She was initiated into Alpha Zeta in 1963, and became a charter member of Beta Rho in 1984, where she held various leadership positions.

*No one truly dies;  
they live on  
in the hearts  
of those  
who love them.*

Marolane Stevenson

*Erma E. Rohrer*

October 19, 2009

Erma was employed as a Primary Special Education Teacher by Eastern Lebanon County School District for 30 years. She was initiated in 1980, and served as president of Nu Chapter during the 1992-94 biennium. Erma was active in many civic organizations.

### **REMINDER**

**Send all Form 6/Memoriam information  
to:**

Kay Stuart, Alpha Alpha State  
Second Vice President  
1367 Hunter Road  
Knoxville, PA 16928  
[estuart001@stny.rr.com](mailto:estuart001@stny.rr.com)